



GRASPOINTNER
Sustainable innovation



Sturdy, flexible,
lightweight – the next
generation of edges.

BG-FILCOTEN[®]
pro R

Drainage system
with composite edging

Proven **quality,** new **possibilities.**

BG-FILCOTEN® pro with composite edging.

This new composite edging is the latest addition to the BG-FILCOTEN® pro product family. The move is a demonstration of our commitment to offer a very lightweight, corrosion-free and colour-stable solution made entirely (100%) from recycled material that also boosts the circular economy. In comparison to a cast-iron edge, the composite edge is some 80% lighter, making it easier to handle. This, coupled with the heat resistance and flexible fastening options provided by our gratings ensure maximum versatility. The composite edging also comes out on top when it comes to noise reduction, especially when combined with a composite grating. What's more, it is electrically non-conductive and holds a tested D 400 load class rating.

Class D 400

Available for:

NW	pro	pro mini
100	no.: 0, 5-0, 10-0, 20-0	Height: 60, 80
150	no.: 0, 5-0, 10-0, 20-0	Height: 100, 120, 170
200	no.: 0, 5-0, 10-0, 20-0	Height: 100, 120, 200



Reduced noise emissions

The use of plastic gratings and edging makes for whisper-quiet operation.

Highlighting the circular economy

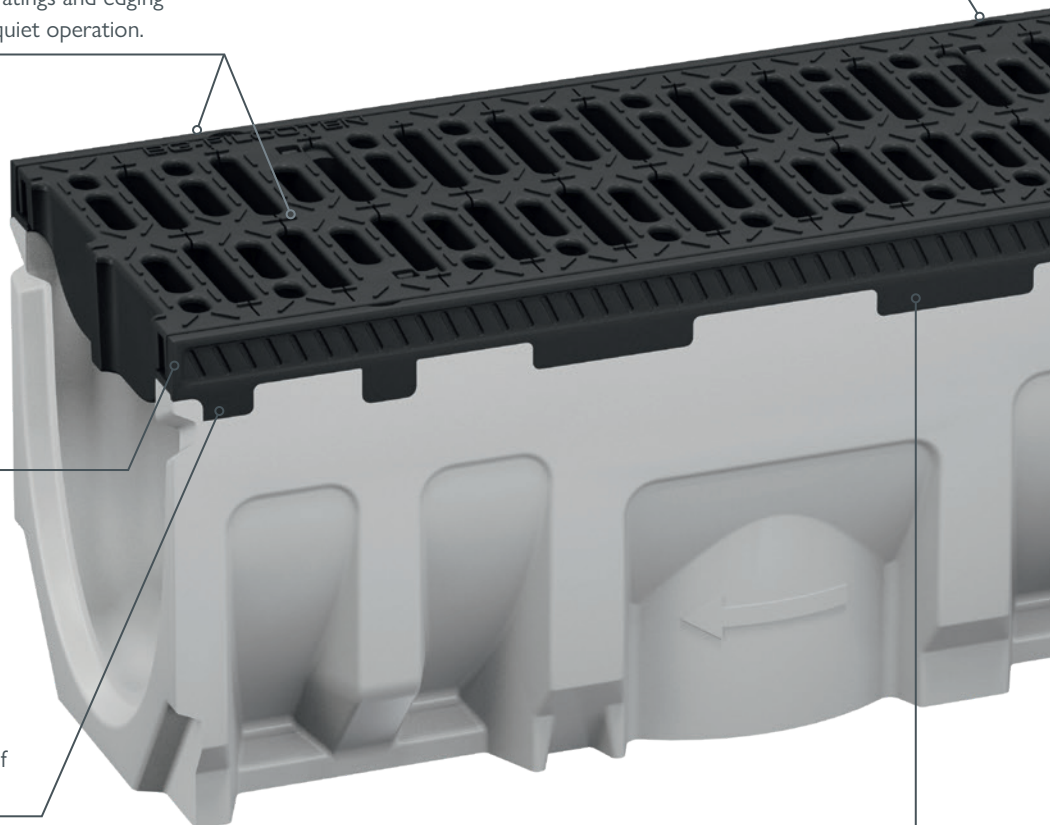
The edging is made of 100% recycled material (recyclate) and marries resource conservation with environmental responsibility.

Weight-optimised

Around 80% lighter than a cast-iron edge, the composite edging excels through its high levels of functionality and stable performance.

Sturdy and reliable

The hallmarks of this composite edging include corrosion resistance, colour stability, high heat resistance and UV resistance, even under extreme conditions.



GRASPOINTNER
Sustainable innovation.

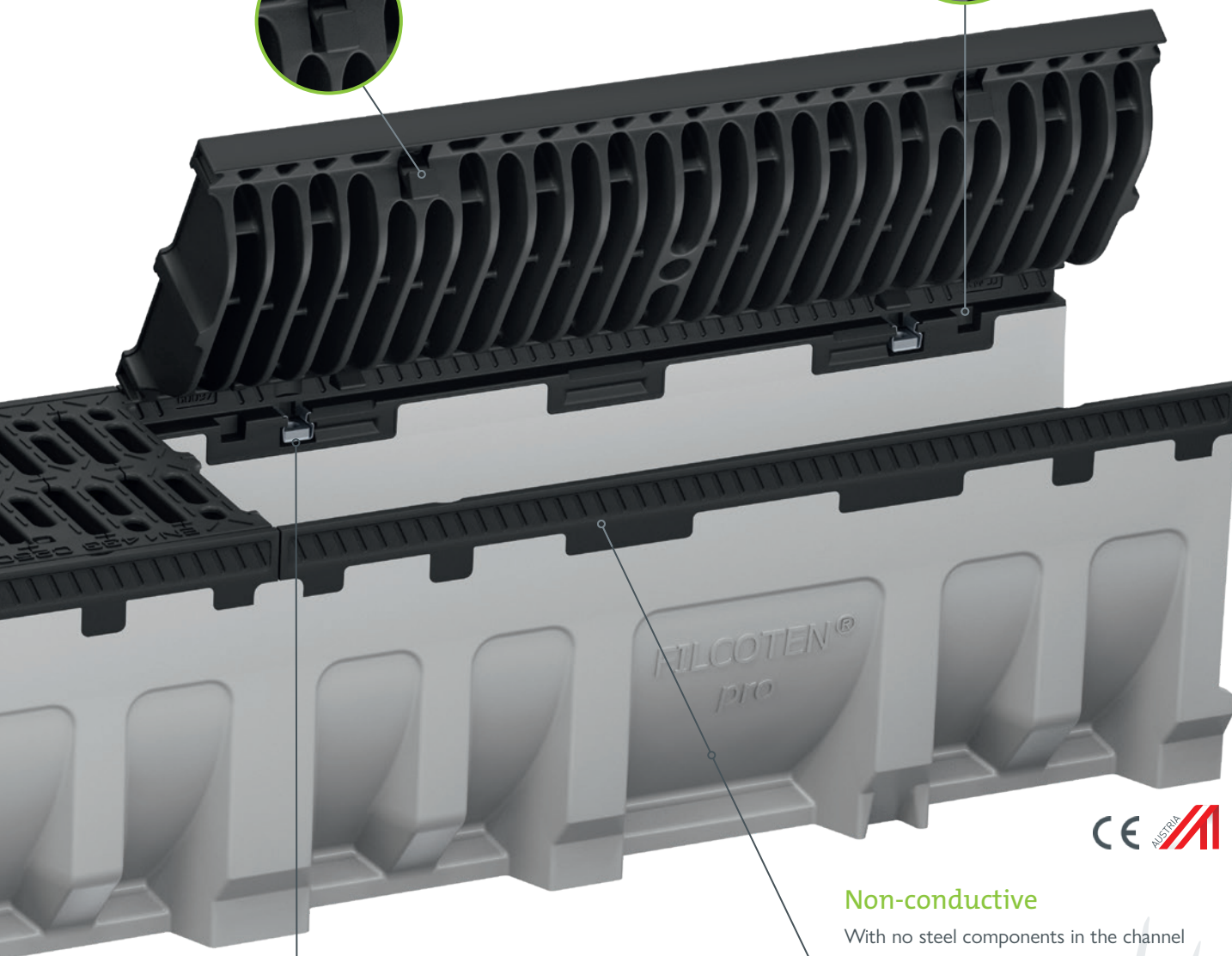
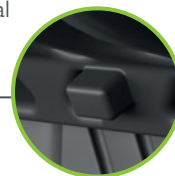
Securely held grating

The intelligent fiX locking system enables the grate to be secured in the channel using a simple four-point, quick-locking fastener.



Pins prevent longitudinal shift

The system's integrated longitudinal shift prevention feature further adds to the grating's stability.



Non-conductive

With no steel components in the channel body or the edging, the entire channel system is electrically non-conductive.

Optional fasteners

As an alternative to the fiX locking system, cast iron gratings (Class D or E) can be fastened at 4 points when using the composite edge. While the cage nut makes any replacement and installation work quick and simple.





GRASPOINTNER
Sustainable innovation.



Safety-enhancing: Circular.
Climate-friendly.
C2C Certified® SILBER by gugler
drucksinn.at



Produced according to the guidelines of
the Austrian Eco-label, Gugler Medien
GmbH, UVV-Nr. 609, www.gugler.at



This paper is made from material
from well-managed forests and
other controlled sources.



Our contribution to certified forest
reforestation projects in India.



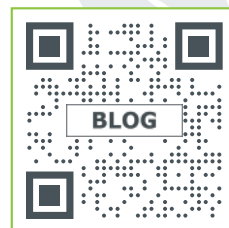
BG-Graspointner Inc.
642 De Courcelle, Suite 206
Montreal (QC), H4C 3C5
Canada

Phone: +1 514 932 5445

E-mail: sales.ca@bg-graspointner.com

Web: www.bg-graspointner.com

More than just products – exciting
reference reports and technical articles
await you on our blog.
Scan now and get inspired!



www.say.bg/en/blog

Stay up to date!
Follow us on LinkedIn and find out all
about our latest projects, products
and BG highlights.



www.say.bg/linkedin



Deutsche Gesellschaft für Nachhaltiges Bauen
German Sustainable Building Council



Your partner for BG-Graspointner drainage systems