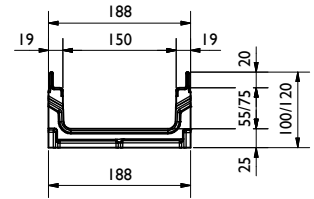
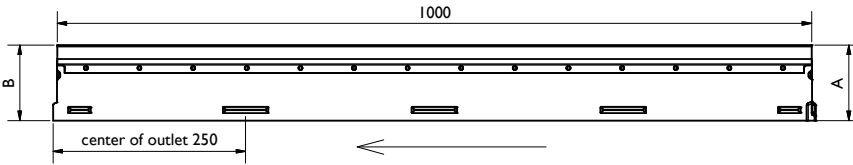
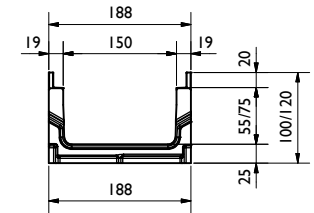
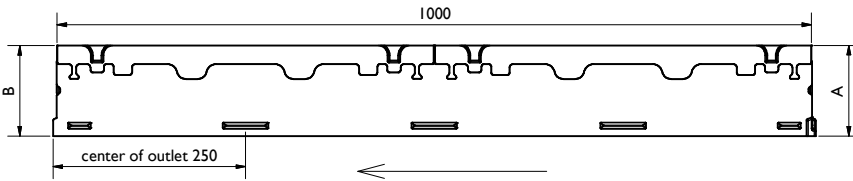


Rinnen/Channel:

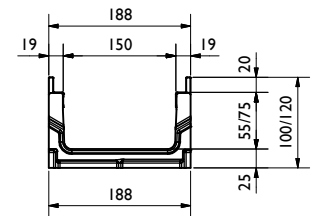
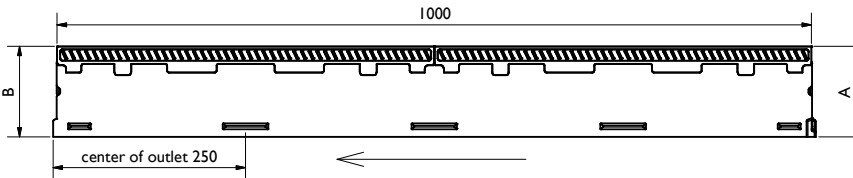
FCT pro NW150 mini 100/120 V-E
BG code: siehe Tabelle/ see table:



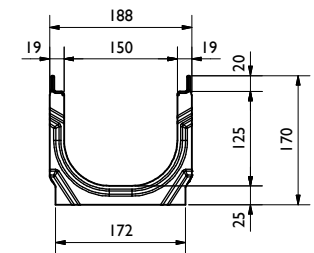
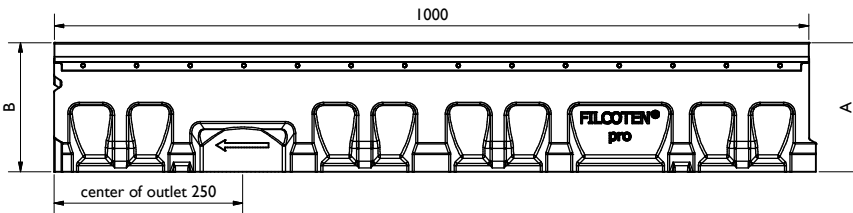
FCT pro NW150 mini 100/120 G
BG code: siehe Tabelle/ see table:



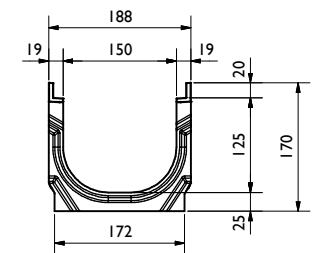
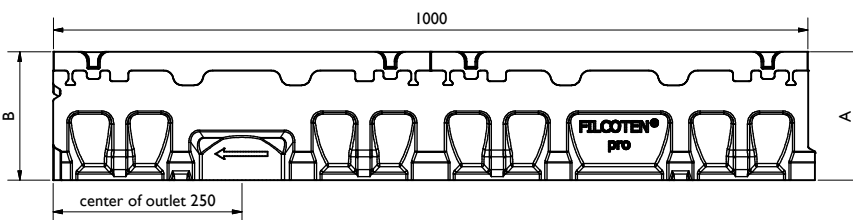
FCT pro NW150 mini 100/120 G
BG code: siehe Tabelle/ see table:



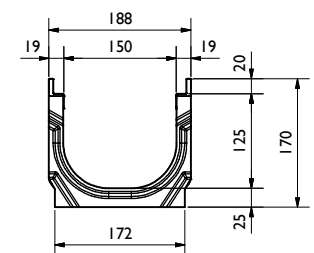
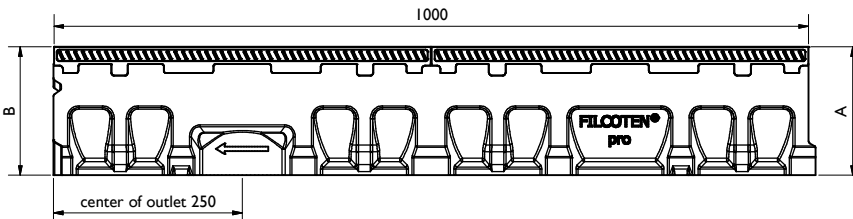
FCT pro NW150 mini 170 V-E
BG code: siehe Tabelle/ see table:



FCT pro NW150 mini 170 G
BG code: siehe Tabelle/ see table:



FCT pro NW150 mini 170 P
BG code: siehe Tabelle/ see table:

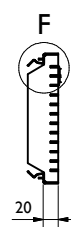
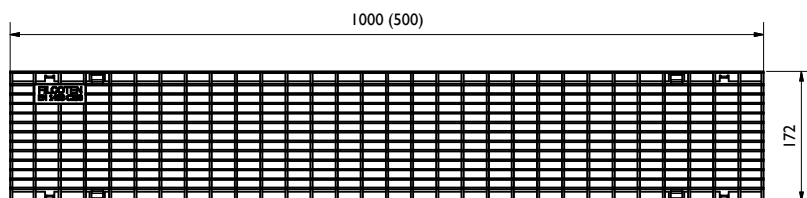


Rinne / channel - Maße / dimensions [mm]										
BG code G	BG code V	BG code E	BG code P	Typ	Höhe A height A	Höhe B height B	Länge length	Gewicht weight G [kg]	Gewicht weight V/E [kg]	Gewicht weight P [kg]
10515102	10515202	10515302	10515402	mini 100	100	100	1000	19,8	18,9	16,3
10515100	10515200	10515300	10515400	mini 120	120	120	1000	21,7	20,2	18,2
10515101	10515201	10515301	10515401	mini 170	170	170	1000	23,2	22,3	19,7

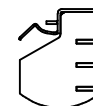
Legende / explanation:	
FCT:	FILCOTEN HPC
V:	verzinkter Stahl / galvanized steel
E:	Edelstahl / stainless steel
G:	Gußeisen / ductile iron
H:	Holz / wood

Roste, Abdeckungen / grates, covers:

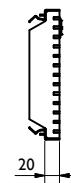
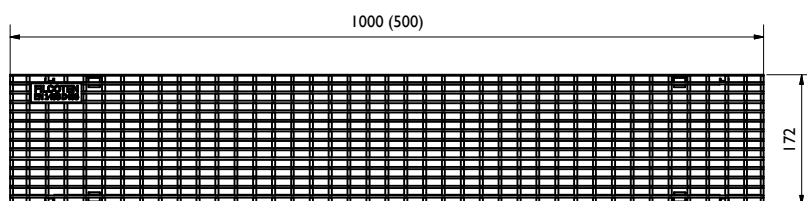
Gitterrost / Mesh grating: MW30/10, C250
BG code: V 17015222 (17015223), E 17015322 (17015323); 6,9 kg (3,6 kg):



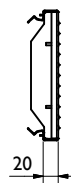
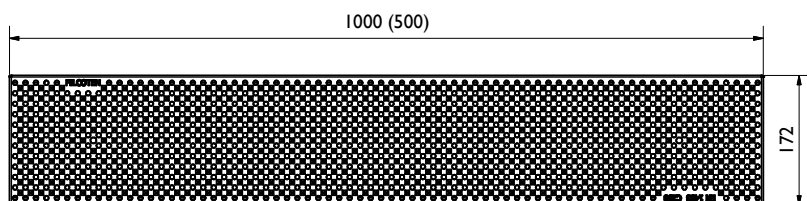
F (1 : 2)



Gitterrost / Mesh grating: MW25/10, D400
BG code: V 17015226 (17015227); 10,4 kg (5,3 kg):

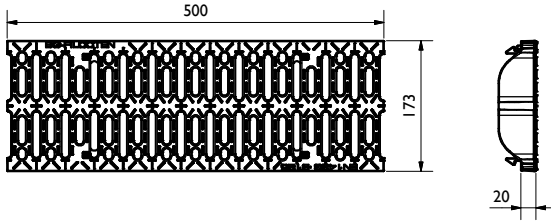


Lochrost / Perforated grating: dm: 6; C250
BG code: V 17015228 (17015229), E 17015328 (17015329); 7 kg (3,5 kg):

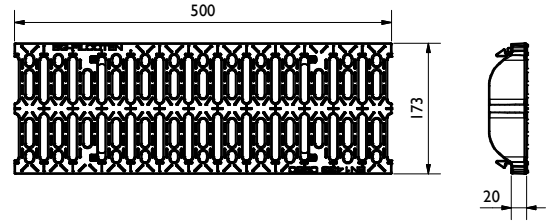


Roste, Abdeckungen / grates, covers:

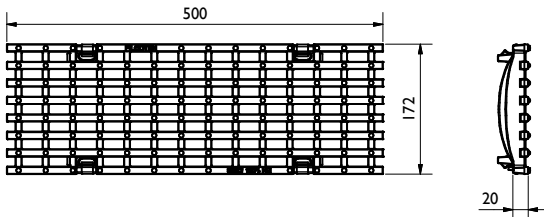
Kunststoff-Stegrost / plastic slotted grating: SW 10/58; B125
BG code: PA 17015403; 1,8 kg:



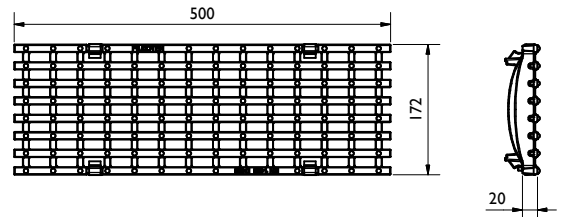
Kunststoff-Stegrost / plastic slotted grating: SW 10/58; C250
BG code: PA 17015404; 2 kg:



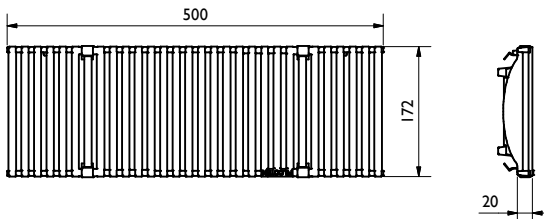
Gußrost / Ductil iron grating: MW29/13, C250
BG code: GJS 17015101; 5,1 kg:



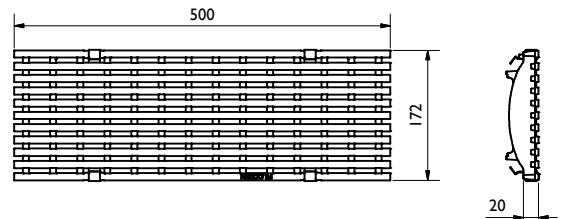
Gußrost / Ductile iron grating: MW29/13, D400
BG code: GJS 17015104; 5,2 kg:



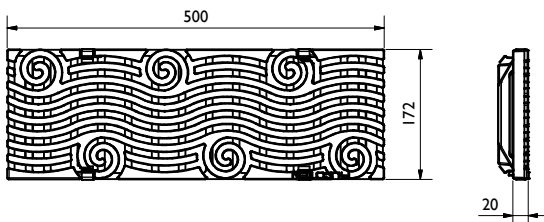
Guß-Designrost / Ductile iron design grating: KIARO, D400
BG code: GJS 17015183; 6 kg:



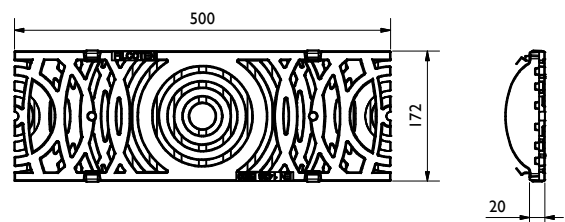
Guß-Designrost / Ductile iron design grating: VIA, D400
BG code: GJS 17015184; 5,6 kg:



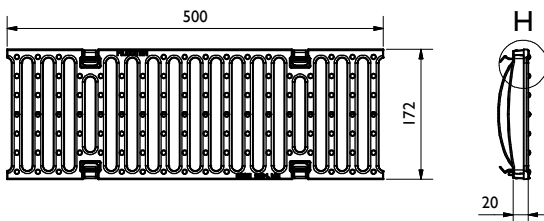
Guß-Designrost / Ductile iron design grating: RIVER, D400
BG code: GJS 17015185; 6,1 kg:



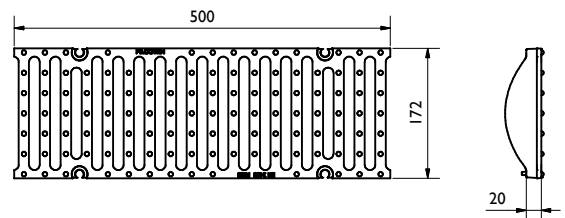
Guß-Designrost / Ductile iron design grating: VILLE, E600
BG code: GJS 17015180; 8,6 kg:



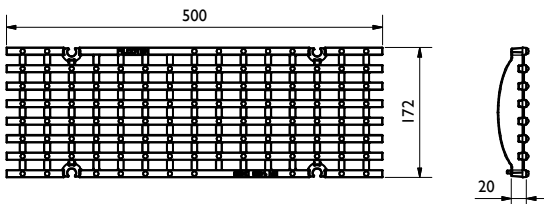
Guß-Stegrost / Ductile iron slotted grating: SW14/150, E600
BG code: GJS 17015105; 7,0 kg:



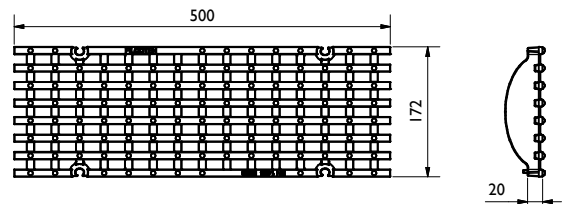
Gußrost / Ductile iron grating: SW14/150, D400
BG code: GJS 17015108; 5,5 kg:
4-fach verschraubbar/4-times bolted



Gußrost / Ductile iron grating: MW25/13, D400
BG code: GJS 17015102; 5,2 kg:
4-fach verschraubbar/4-times bolted

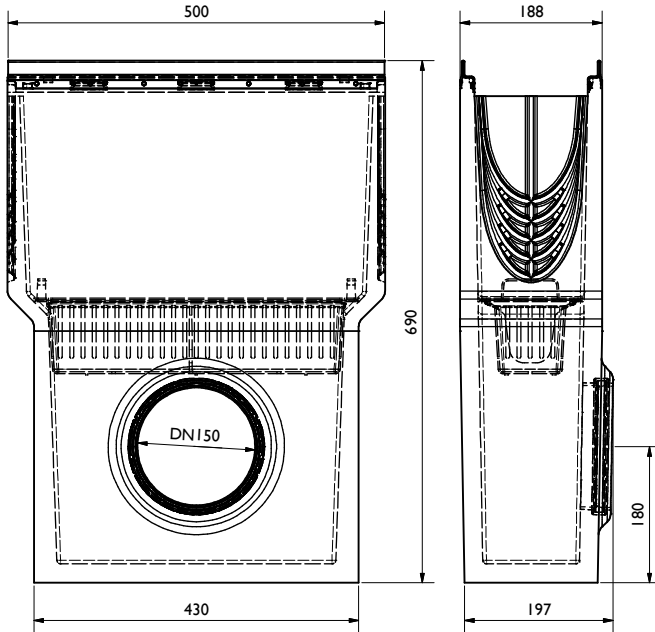


Gußrost / Ductile iron grating: MW22/13, E600
BG code: GJS 17015103; 7,2 kg:
4-fach verschraubbar/4-times bolted

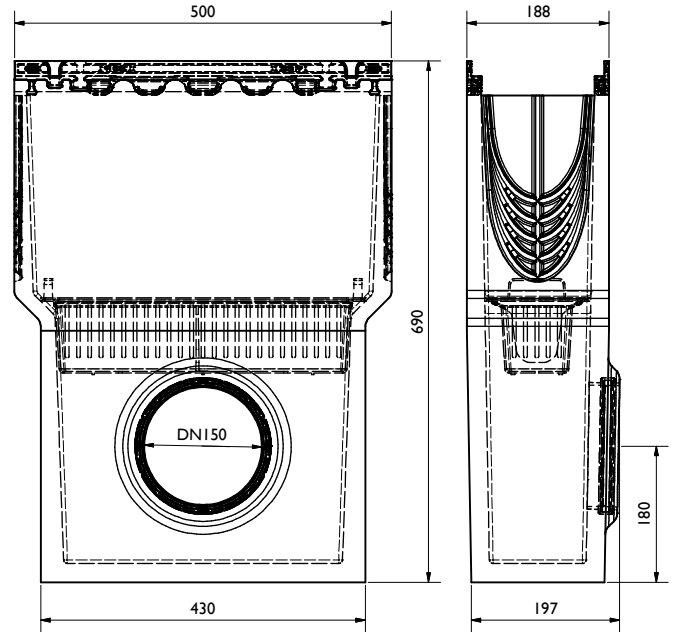


Zubehör / accessories:

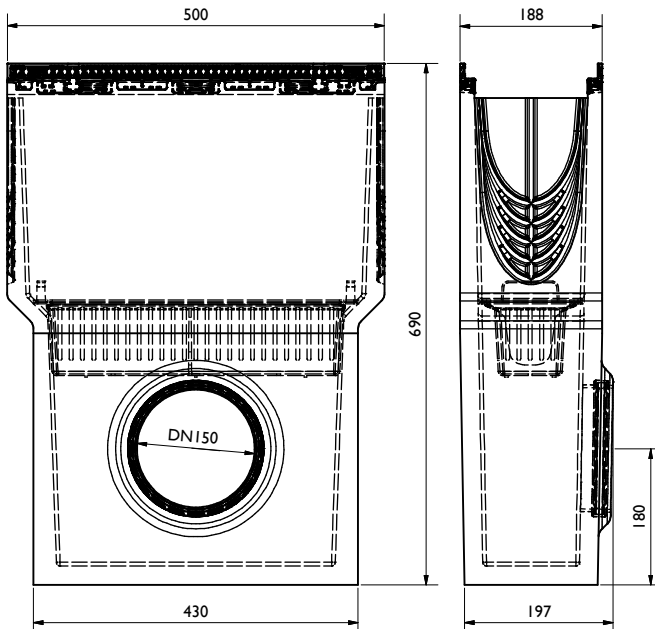
Sinkkasten / Sump unit:
inkl. Schlammemeier / incl. silt bucket (22516; 0,3 kg)
BG code: V 10615292, E 10615392; 44,8 kg:



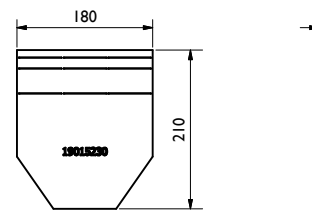
Sinkkasten / Sump unit:
inkl. Schlammemeier / incl. silt bucket (22516; 0,3 kg)
BG code: G 10615192; 45,3 kg:



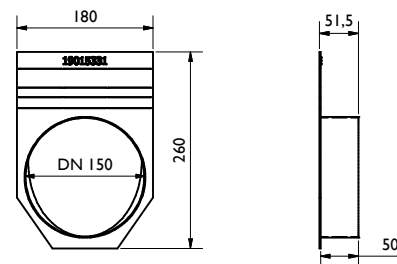
Sinkkasten / Sump unit:
inkl. Schlammemeier / incl. silt bucket (22516; 0,3 kg)
BG code: P 10615492; 43,6 kg:



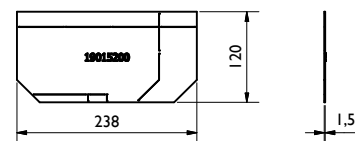
Stirn-/ Endplatte / End cap:
BG code: V 19015230, E 19015330; 0,5 kg:



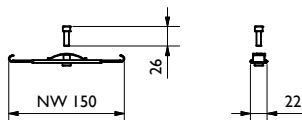
Stirn-/ Endplatte / End cap:
BG code: V 19015231, E 19015331; 0,6 kg:



Stirn-/ Endplatte / End cap:
BG code: V 19015200, E 19015300; 0,3 kg:



Vandalismus Verriegelung / Anti-vandalism locking device
BG code: E 32088; 0,1 kg:



Verschraubungsmaterial / Bolting material:
BG code: V 32103; BG code: E 32109:

