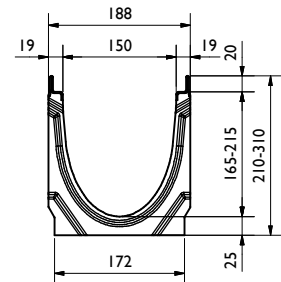
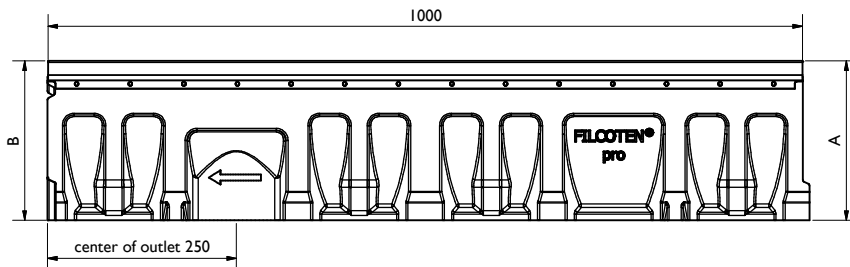


Rinnen/Channel:

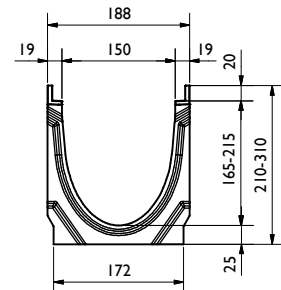
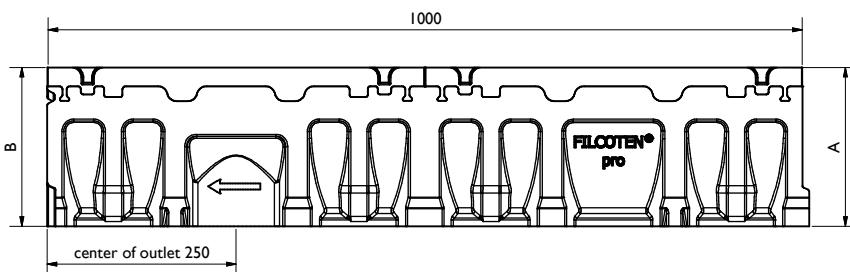
FCT pro NW150 V-E

BG code: siehe Tabelle/ see table:



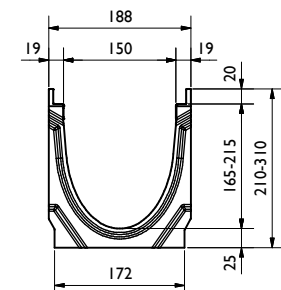
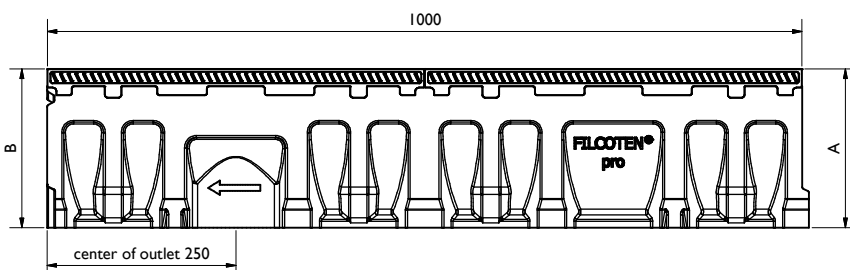
FCT pro NW150 G

BG code: siehe Tabelle/ see table:



FCT pro NW150 P

BG code: siehe Tabelle/ see table:

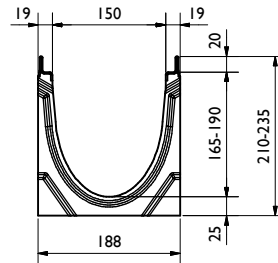
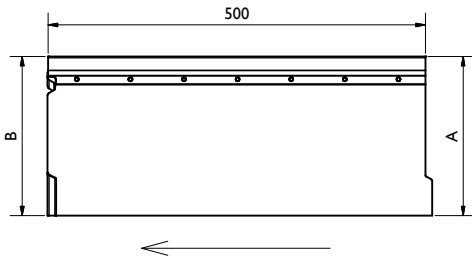


Rinne / channel - Maße / dimensions [mm]										
BG code G	BG code V	BG code E	BG code P	Typ	Höhe A height A	Höhe B height B	Länge length	Gewicht weight G [kg]	Gewicht weight V/E [kg]	Gewicht weight P [kg]
10615100	10615200	10615300	10615400	0	210	210	1000	31,8	30,8	29
10615101	10615201	10615301	-	1	210	215	1000	32,5	31,5	-
10615102	10615202	10615302	-	2	215	220	1000	33,2	32,2	-
10615103	10615203	10615303	-	3	220	225	1000	33,9	32,9	-
10615104	10615204	10615304	-	4	225	230	1000	34,6	33,6	-
10615105	10615205	10615305	-	5	230	235	1000	35,3	34,3	-
10615161	10615261	10615361	10615461	5-0	235	235	1000	35,6	34,6	32,1
10615106	10615206	10615306	-	6	235	240	1000	35,9	34,9	-
10615107	10615207	10615307	-	7	240	245	1000	36,6	35,6	-
10615108	10615208	10615308	-	8	245	250	1000	37,2	36,2	-
10615109	10615209	10615309	-	9	250	255	1000	37,9	36,9	-
10615110	10615210	10615310	-	10	255	260	1000	38,5	37,5	-
10615162	10615262	10615362	10615462	10-0	260	260	1000	38,8	37,8	36,5
10615164	10615264	10615364	10615464	20-0	310	310	1000	48,7	47,7	47

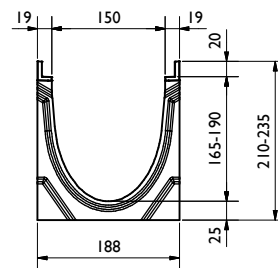
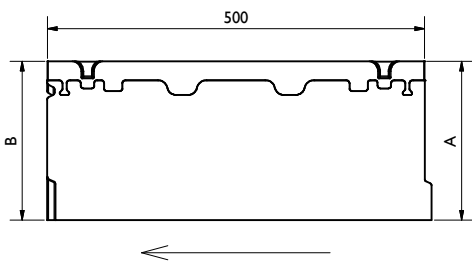
Legende / explanation:	
FCT:	FILCOTEN HPC
V:	verzinkter Stahl / galvanized steel
E:	Edelstahl / stainless steel
G:	Gußeisen / ductile iron
H:	Holz / wood

Rinnen/Channel:

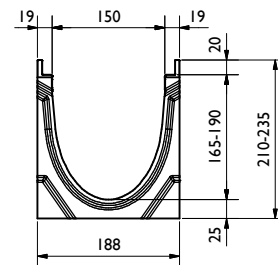
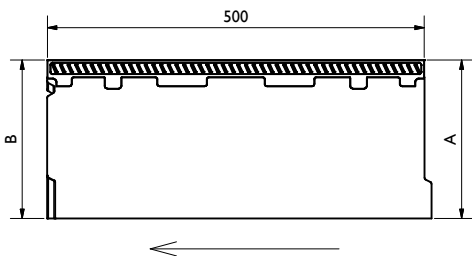
FCT pro NW150 V-E, 0,5m
BG code: siehe Tabelle/ see table:



FCT pro NW150 G, 0,5m
BG code: siehe Tabelle/ see table:



FCT pro NW150 P, 0,5m
BG code: siehe Tabelle/ see table:

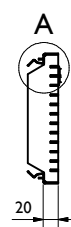
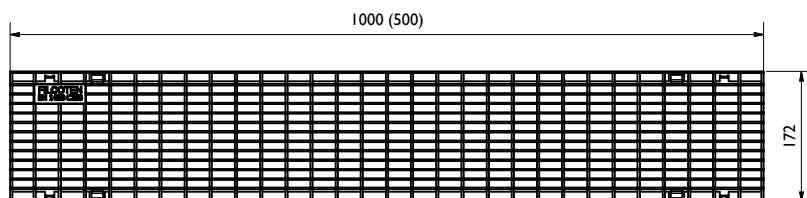


Rinne / channel - Maße / dimensions [mm]										
BG code G	BG code V	BG code E	BG code P	Typ	Höhe A height A	Höhe B height B	Länge length	Gewicht weight G [kg]	Gewicht weight V/E [kg]	Gewicht weight P [kg]
10615180	10615280	10615380	10615480	0 (0,5m)	210	210	500	17,4	16,9	15,2
10615181	10615281	10615381	10615481	5-0 (0,5m)	235	235	500	21,2	20,7	18,9

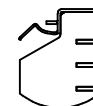
Legende / explanation:	
FCT:	FILCOTEN HPC
V:	verzinkter Stahl / galvanized steel
E:	Edelstahl / stainless steel
G:	Gußeisen / ductile iron
H:	Holz / wood

Roste, Abdeckungen / grates, covers:

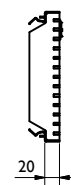
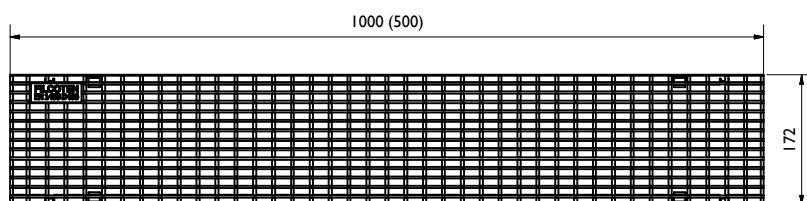
Gitterrost / Mesh grating: MW30/10, C250
BG code: V 17015222 (17015223), E 17015322 (17015323); 6,9 kg (3,6 kg):



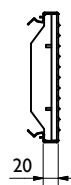
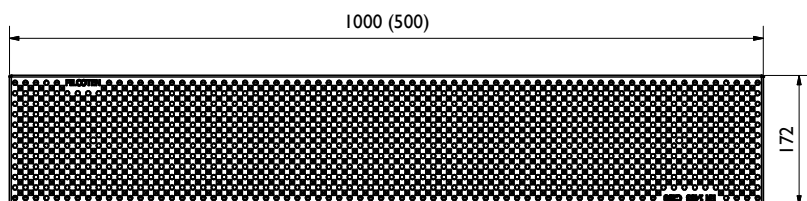
A (1 : 2)



Gitterrost / Mesh grating: MW25/10, D400
BG code: V 17015226 (17015227); 10,4 kg (5,3 kg):

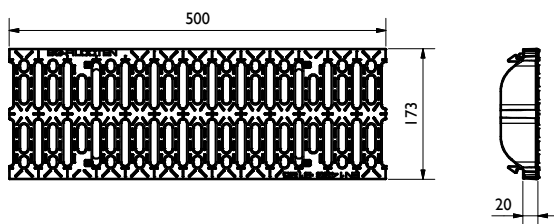


Lochrost / Perforated grating: dm: 6; C250
BG code: V 17015228 (17015229), E 17015328 (17015329); 7 kg (3,5 kg):

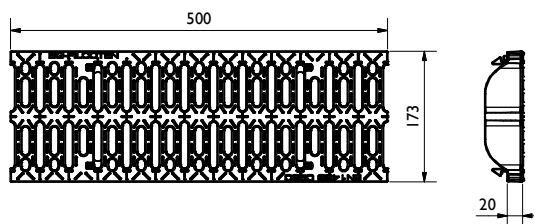


Roste, Abdeckungen / grates, covers:

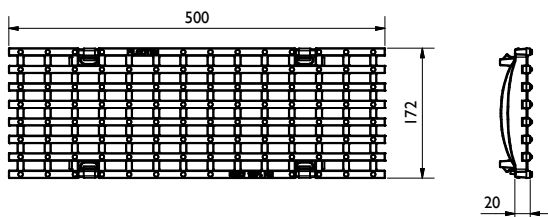
Kunststoff-Stegrost / plastic slotted grating: SW 10/58; B125
BG code: PA 17015403; 1,8 kg:



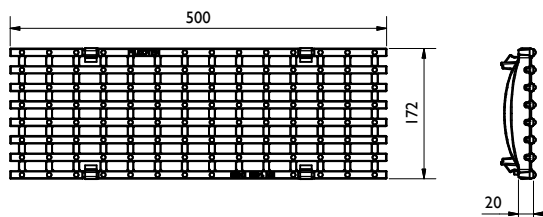
Kunststoff-Stegrost / plastic slotted grating: SW 10/58; C250
BG code: PA 17015404; 2 kg:



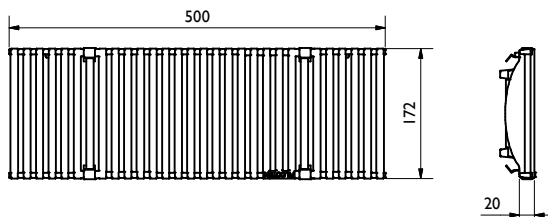
Gußrost / Ductil iron grating: MW29/13, C250
BG code: GJS 17015101; 5,1 kg:



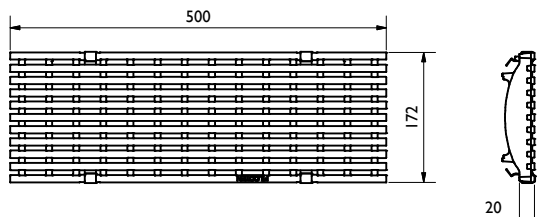
Gußrost / Ductile iron grating: MW29/13, D400
BG code: GJS 17015104; 5,2 kg:



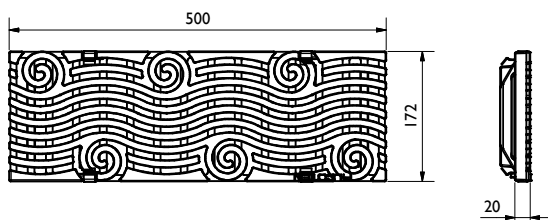
Guß-Designrost / Ductile iron design grating: KIARO, D400
BG code: GJS 17015183; 6 kg:



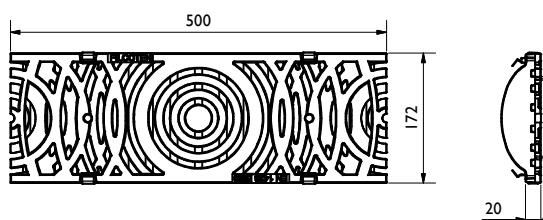
Guß-Designrost / Ductile iron design grating: VIA, D400
BG code: GJS 17015184; 5,6 kg:



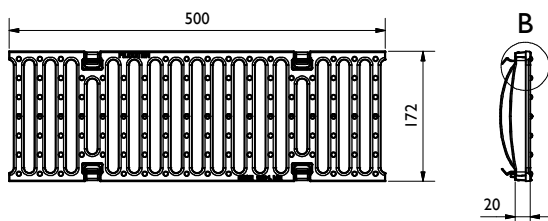
Guß-Designrost / Ductile iron design grating: RIVER, D400
BG code: GJS 17015185; 6,1 kg:



Guß-Designrost / Ductile iron design grating: VILLE, E600
BG code: GJS 17015180; 8,6 kg:



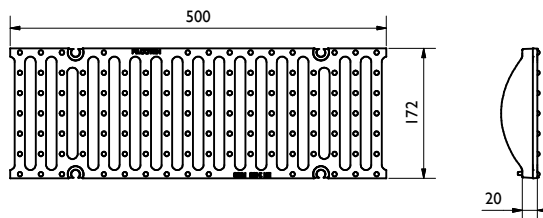
Guß-Stegrost / Ductile iron slotted grating: SW14/150, E600
BG code: GJS 17015105; 7,0 kg:



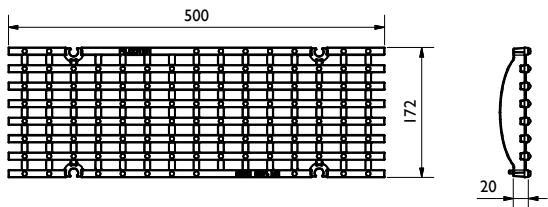
B (1 : 2)



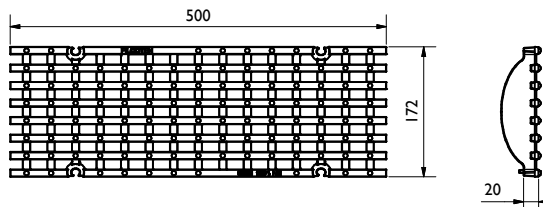
Gußrost / Ductile iron grating: SW14/150, D400
BG code: GJS 17015108; 5,5 kg:
4-fach verschraubbar/4-times bolted



Gußrost / Ductile iron grating: MW25/13, D400
BG code: GJS 17015102; 5,2 kg:
4-fach verschraubbar/4-times bolted



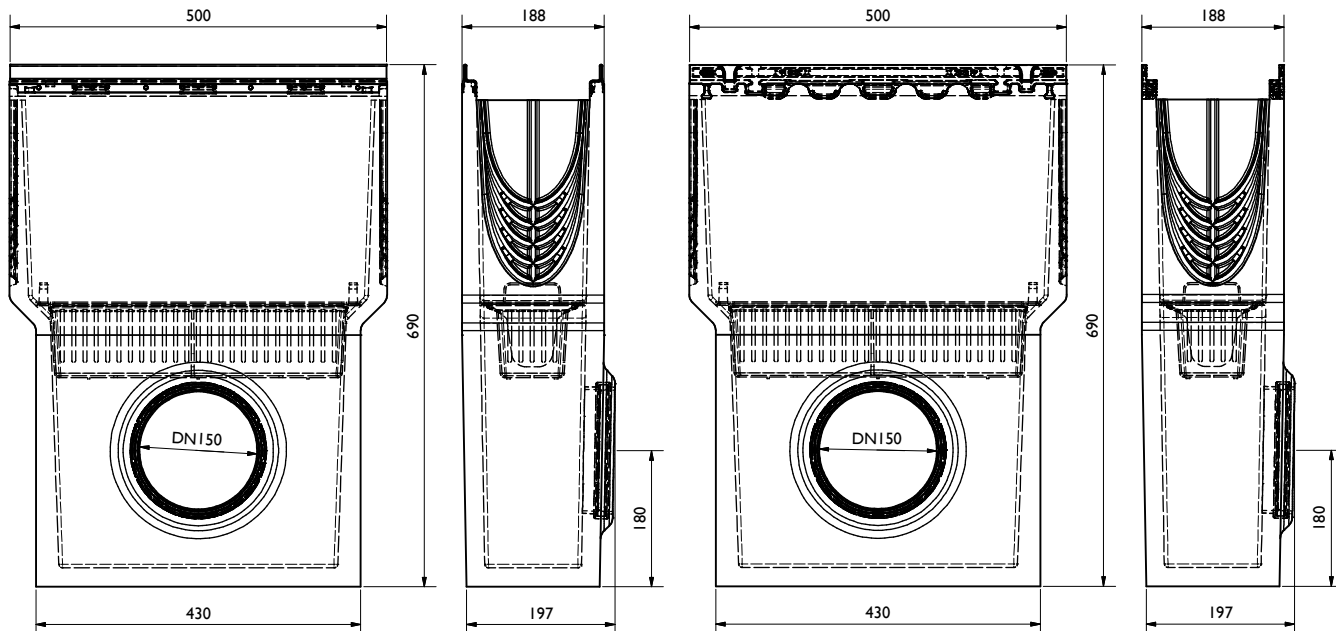
Gußrost / Ductile iron grating: MW22/13, E600
BG code: GJS 17015103; 7,2 kg:
4-fach verschraubbar/4-times bolted



Zubehör / accessories:

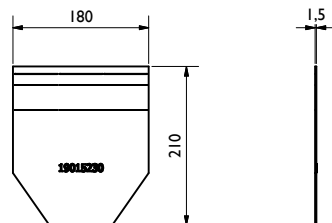
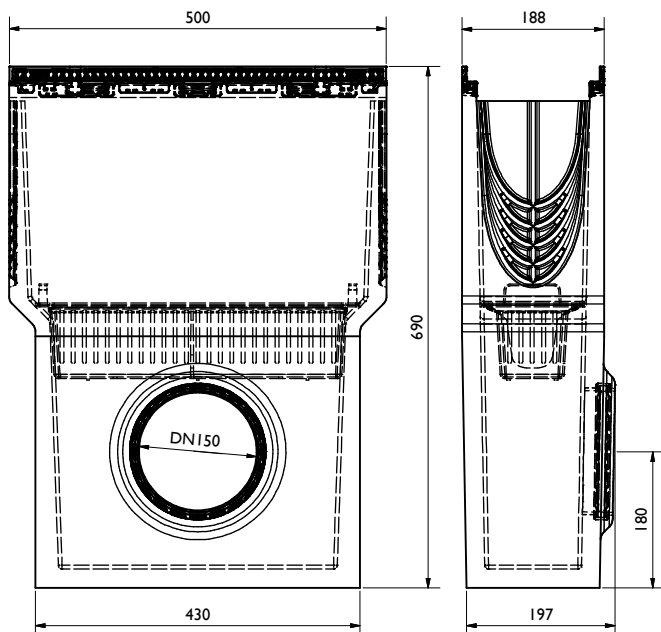
Sinkkasten / Sump unit:
inkl. Schlammeimer / incl. silt bucket (22516; 0,3 kg)
BG code: V 10615292, E 10615392; 44,8 kg:

Sinkkasten / Sump unit:
inkl. Schlammeimer / incl. silt bucket (22516; 0,3 kg)
BG code: G 10615192; 45,3 kg:

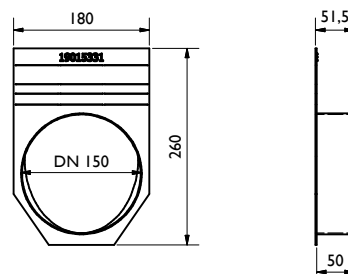


Sinkkasten / Sump unit:
inkl. Schlammeimer / incl. silt bucket (22516; 0,3 kg)
BG code: P 10615492; 43,6 kg:

Stirn-/ Endplatte / End cap:
BG code: V 19015230, E 19015330; 0,5 kg:



Stirn-/ Endplatte / End cap:
BG code: V 19015231, E 19015331; 0,6 kg:



Vandalismus Verriegelung / Anti-vandalism locking device
BG code: E 32088; 0,1 kg:

Verschraubungsmaterial / Bolting material:
BG code: V 32103; BG code: E 32109:

