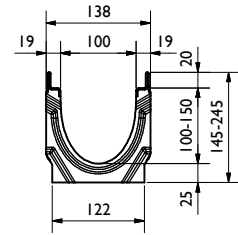
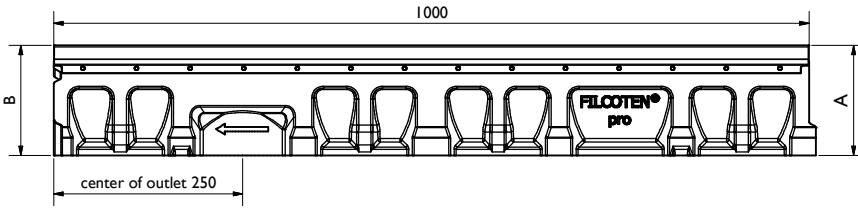
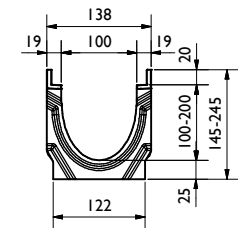
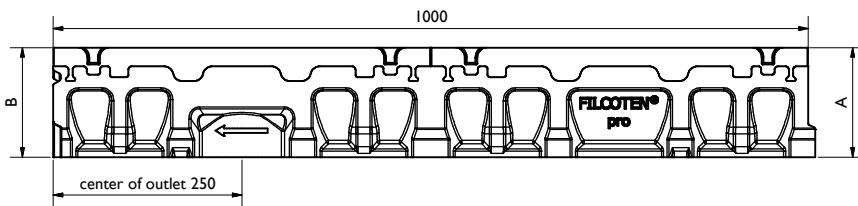


Rinnen/Channel:

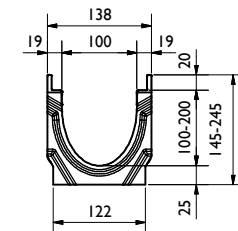
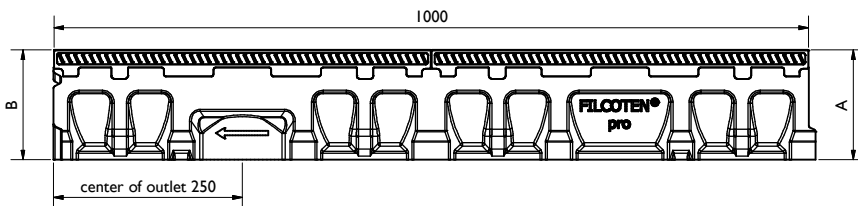
FCT pro NW100 V-E
BG code: siehe Tabelle/ see table:



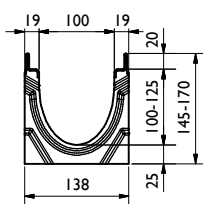
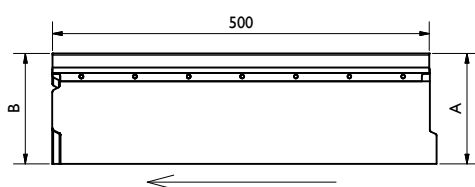
FCT pro NW100 G
BG code: siehe Tabelle/ see table:



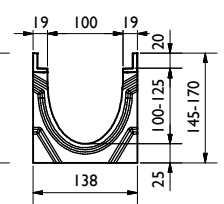
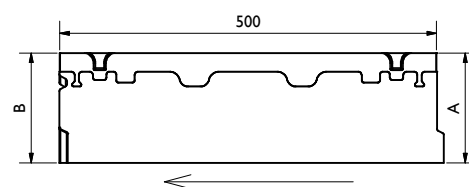
FCT pro NW100 P
BG code: siehe Tabelle/ see table:



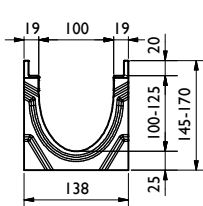
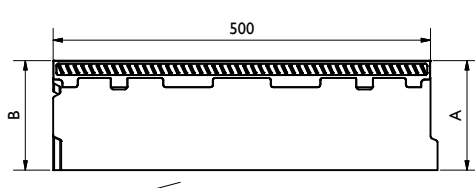
FCT pro NW100 V-E, 0,5m
BG code: siehe Tabelle/ see table:



FCT pro NW100 G, 0,5m
BG code: siehe Tabelle/ see table:



FCT pro NW100 P, 0,5m
BG code: siehe Tabelle/ see table:

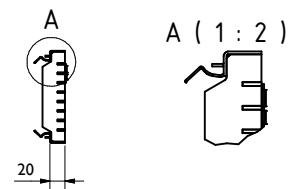
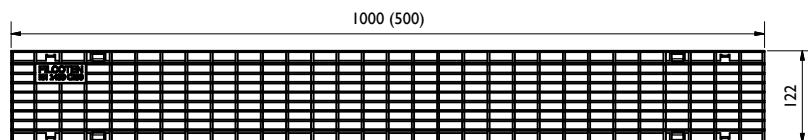


Rinne / channel - Maße / dimensions [mm]										
BG code V	BG code E	BG code G	BG code P	Typ	Höhe A height A	Höhe B height B	Länge length	Gewicht weight V/E [kg]	Gewicht weight G [kg]	Gewicht weight P [kg]
10610200	10610300	10610100	10610400	0	145	145	1000	18,3	19,1	17
10610280	10610380	10610180	10610480	0 (0,5m)	145	145	500	10,9	11,7	9,6
10610201	10610301	10610101	-	1	145	150	1000	18,6	19,5	-
10610202	10610302	10610102	-	2	150	155	1000	19,3	20,2	-
10610203	10610303	10610103	-	3	155	160	1000	20	20,9	-
10610204	10610304	10610104	-	4	160	165	1000	20,6	21,6	-
10610205	10610305	10610105	-	5	165	170	1000	21,3	22,3	-
10610261	10610361	10610161	10610461	5-0	170	170	1000	21,6	22,6	20,3
10610281	10610381	10610181	10610481	5-0 (0,5m)	170	170	500	13,2	13,5	11,8
10610206	10610306	10610106	-	6	170	175	1000	21,9	23	-
10610207	10610307	10610107	-	7	175	180	1000	22,6	23,3	-
10610208	10610308	10610108	-	8	180	185	1000	23,3	24	-
10610209	10610309	10610109	-	9	185	190	1000	23,9	24,7	-
10610210	10610310	10610110	-	10	190	195	1000	24,6	25,4	-
10610262	10610362	10610162	10610462	10-0	195	195	1000	24,9	26,1	23,6
10610282	10610382	10610182	10610482	10-0 (0,5m)	195	195	500	17,5	18,3	16,2
10610264	10610364	10610164	10610464	20-0	245	245	1000	31	32	28,5

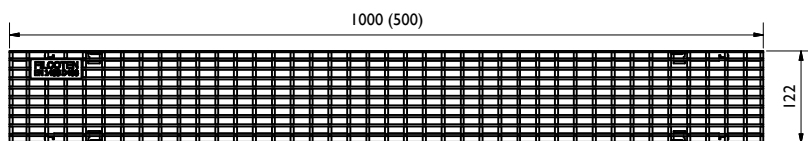
Legende / explanation:	
FCT:	FILCOTEN HPC
V:	verzinkter Stahl / galvanized steel
E:	Edelstahl / stainless steel
G:	Gußeisen / ductile iron
H:	Holz / wood

Roste, Abdeckungen / grates, covers:

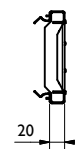
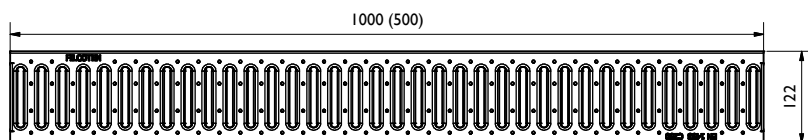
Gitterrost / Mesh grating: MW 30/10, C250
BG code: V 17010222 (17010223), E 17010322 (17010323); C250 3,3 kg (1,6 kg):



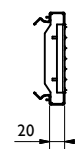
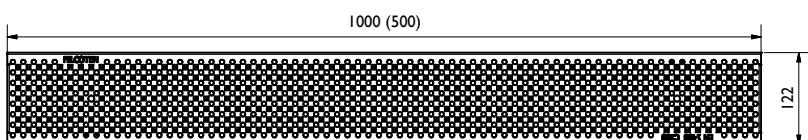
Gitterrost / Mesh grating: MW 25/10, D400
BG code: V 17010226 (17010227), E 17010326 (17010327); D400 7,4 kg (3,7 kg):



Stegrost / Slotted grating: SW 8/80, C250
BG code: V 17010206 (17010207), E 17010306 (17010307); C250 4,5 kg (2,2 kg):

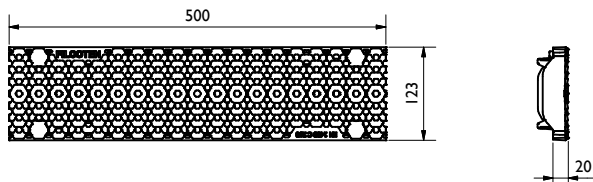


Lochrost / Perforated grating: Ø 6 mm, C250
BG code: V 17010228 (17010229), E 17010328 (17010329); 3,3 kg (1,7 kg):

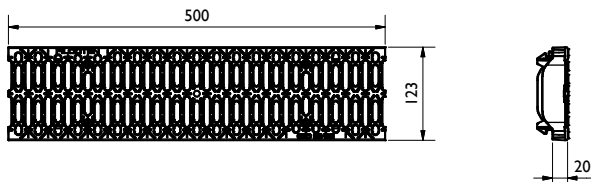


Roste, Abdeckungen / grates, covers:

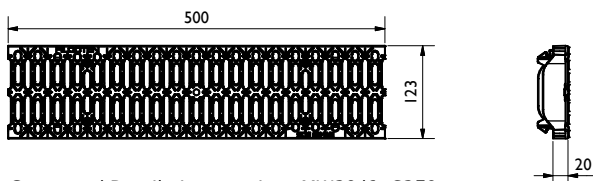
Kunststoffrost / Plastic grating: COMBee; Ø7,3; C250
BG code: PA 17010402; 1,1 kg:



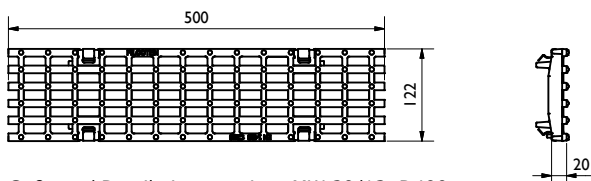
Kunststoff-Stegrost / plastic slotted grating: SW 8/40; C250
BG code: PA 17010404; 1,1 kg:



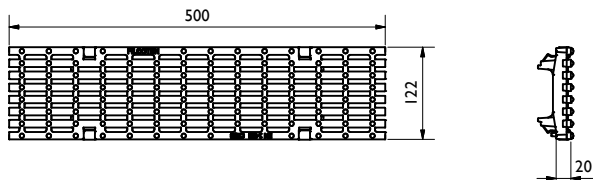
Kunststoff-Stegrost / plastic slotted grating: SW 8/40; B125
BG code: PA 17010403; 1,1 kg:



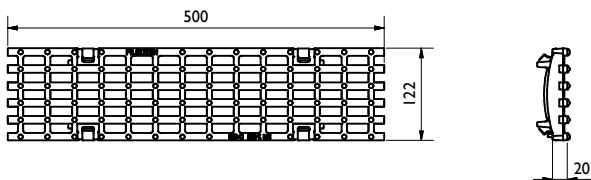
Gußrost / Ductile iron grating: MW 29/13, C250
BG code: GJS 17010101; 3,2 kg:



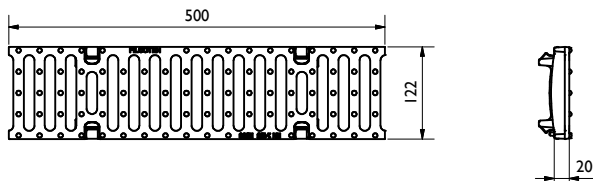
Gussrost / Ductile iron grating: MW29/6, C250
BG code: GJS 17010106; 3,6 kg:



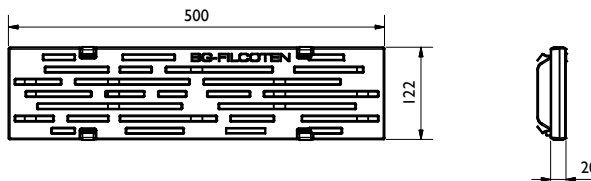
Gußrost / Ductile iron grating: MW 29/13, D400
BG code: GJS 17010104; 3,4 kg:



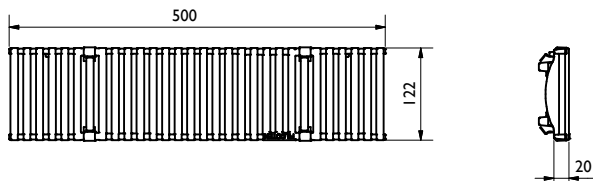
Guß-Stegrost / Ductile iron slotted grating: SW 14/100, E600
BG code: GJS 17010105; 3,8 kg:



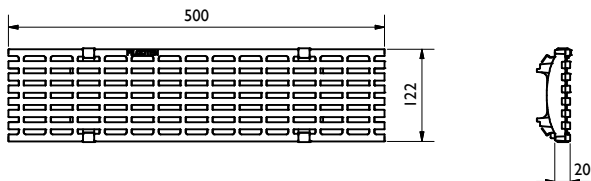
Guß-Designrost / Ductile iron design grating: LINEAR, D400
BG code: GJS 17010188; 4,7 kg:



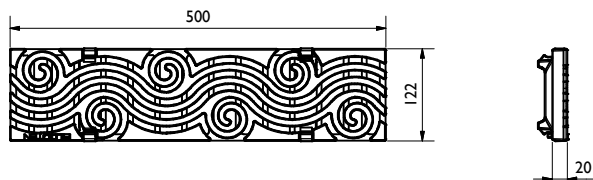
Guß-Designrost / Ductile iron design grating: KIARO, D400
BG code: GJS 17010183; 4,1 kg:



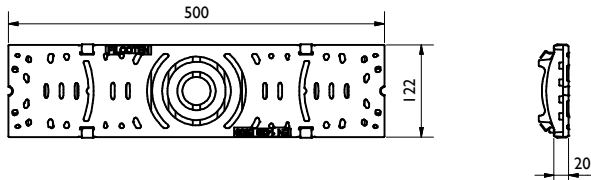
Guß-Designrost / Ductile iron design grating: VIA, D400
BG code: GJS 17010184; 3,6 kg:



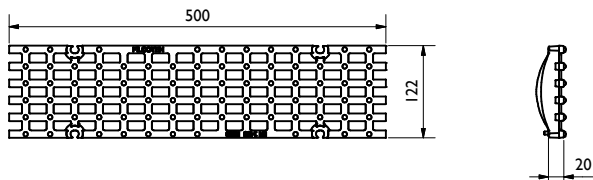
Guß-Designrost / Ductile iron design grating: RIVER, D400
BG code: GJS 17010185; 3,8 kg:



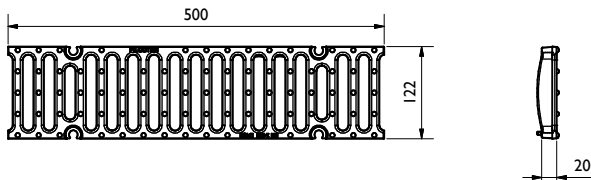
Guß-Designrost / Ductile iron design grating: VILLE, E600
BG code: GJS 17010180; 5,2 kg:



Gußrost / Ductile iron grating: MW 22/13, E600
BG code: GJS 17010103; 4,2 kg:
4-fach verschraubbar/4-times bolted

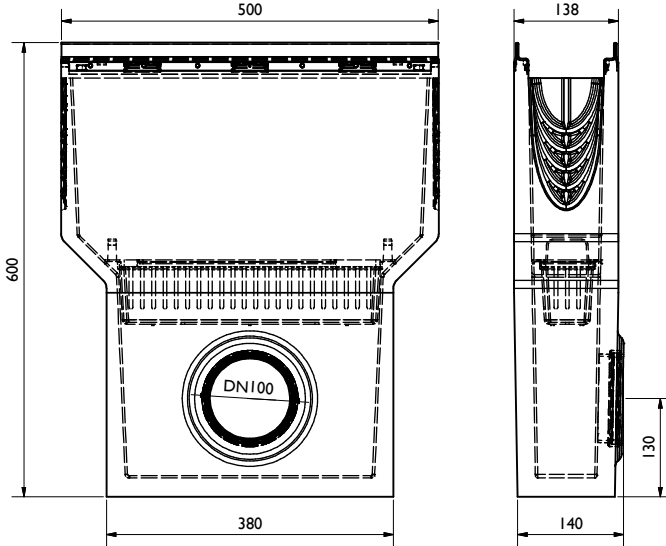


Guß-Stegrost / Ductile iron slotted grating: SW 14/100, D400
BG code: GJS 17010108; 3,8 kg:
4-fach verschraubbar/4-times bolted

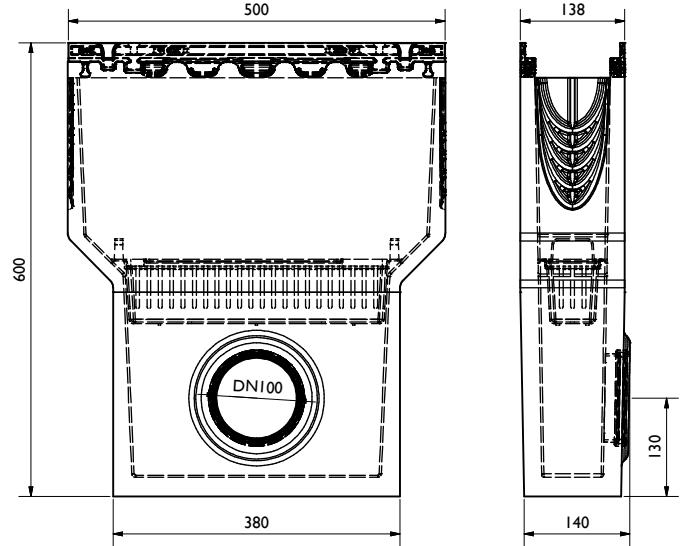


Zubehör / accessories:

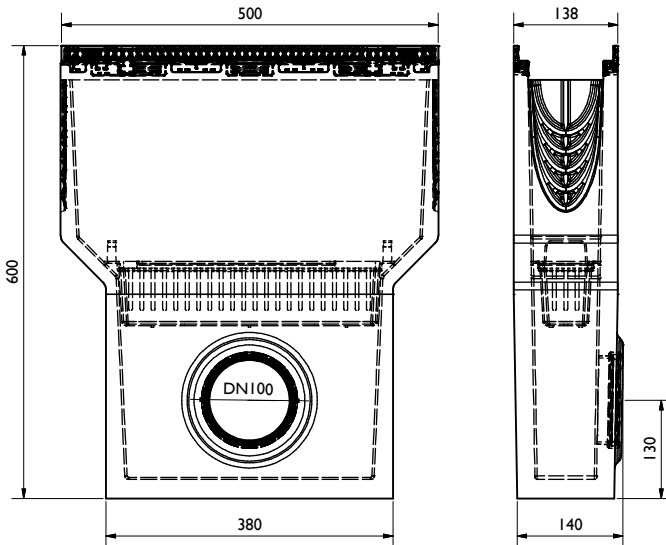
Sinkkasten / Sump unit:
inkl. Schlammemeier / incl. silt bucket (22515; 0,2 kg)
BG code: V 10610292, E 10610392; 32,6 kg



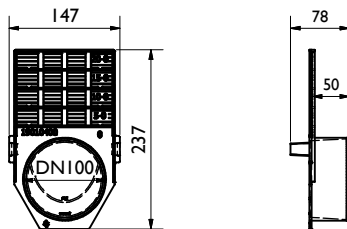
Sinkkasten / Sump unit:
inkl. Schlammemeier / incl. silt bucket (22515; 0,2 kg)
BG code: G 10610192; 33,1 kg



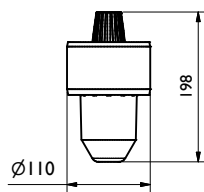
Sinkkasten / Sump unit:
inkl. Schlammemeier / incl. silt bucket (22515; 0,2 kg)
BG code: P 10610492; 32 kg



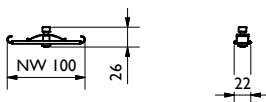
Stirn-/Endplatte / Front-/End cap:
BG code: PA 19010400; 0,12kg



Geruchsverschluss für Bodenablauf / Drain trap for bottom outlet:
BG code: PVC 30019; 0,2 kg.



Vandalismus Verriegelung / Anti-vandalism locking device
BG code: E 32087; 0,1 kg:



Verschraubungsmaterial / Bolting material:
BG code: V 32103: BG code: E 32109:

