



GRASPOINTNER
Sustainable innovation.



Sturdy, flexible,
lightweight – the next
generation of edges.

BG-FILCOTEN[®]
pro P

NEW up to class D 400

Drainage system
with composite edging

Proven **quality,** new **opportunities.**

BG-FILCOTEN® pro with composite edging.

This new composite edging is the latest addition to the BG-FILCOTEN® pro product family. The move is a demonstration of our commitment to offer a very lightweight, corrosion-free and colour-stable solution made entirely (100%) from recycled material that also boosts the circular economy. Compared to cast iron edges, the composite edge has around 80 % less weight, making it easier to handle. In addition, the frame is heat-resistant and can withstand even the high temperatures that occur during asphalt work. At the same time, the flexible fixing options of our gratings offer maximum versatility. The composite edging also comes out on top when it comes to noise reduction, especially when combined with a composite grating (up to C 250). In addition, it does not conduct electricity and is tested with the composite edge up to load class D 400 ¹⁾.



Available for:

NW	Class	pro	pro mini
100	D 400 ¹⁾	no.: 0, 5-0, 10-0, 20-0	Height: 70, 80
150	D 400 ¹⁾	no.: 0, 5-0, 10-0, 20-0	Height: 100, 120, 170
200	D 400 ¹⁾	no.: 0, 5-0, 10-0, 20-0	Height: 100, 120, 200



Reduced noise emissions

The use of composite gratings and edge ensures particularly low-noise functionality

Highlighting the circular economy

The edging is made of 100% recycled material (recyclate) and marries resource conservation with environmental responsibility.

Weight-optimised

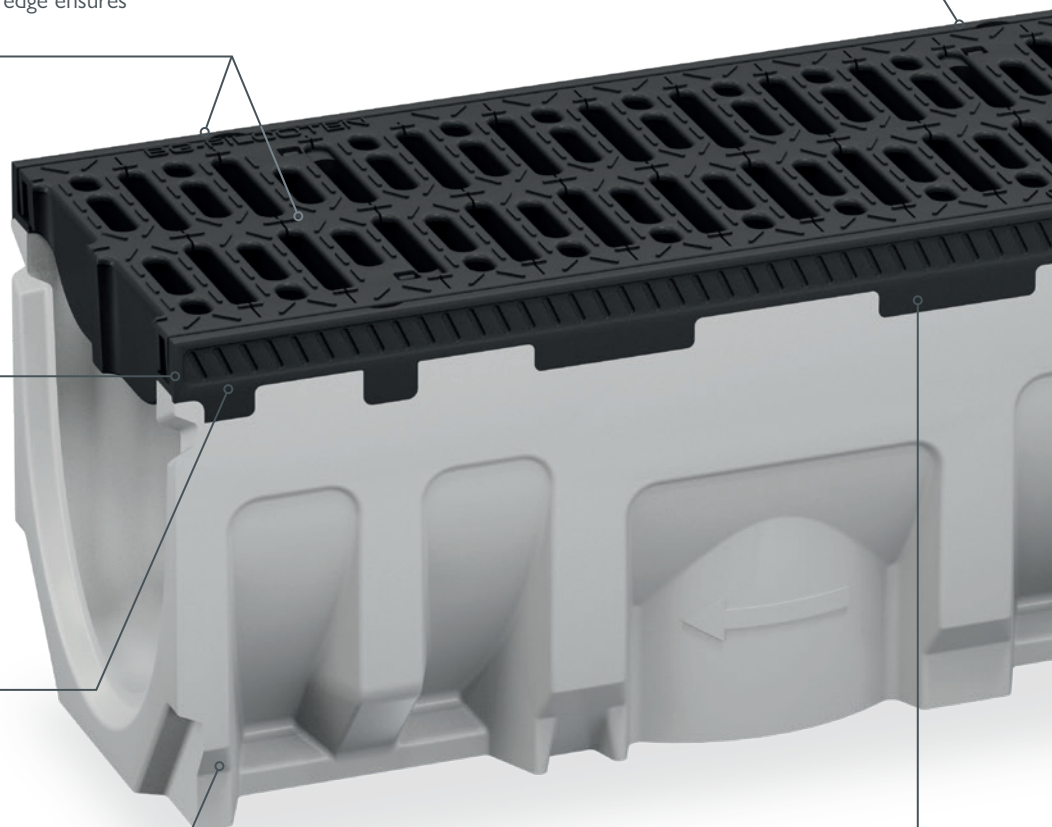
Around 80% lighter than a cast iron edge, the composite edging excels through its high levels of functionality and stable performance.

EPDs now available

BG-FILCOTEN® drainage systems now have verified EPDs – for clear, fact-based environmental information and sustainable construction decisions.

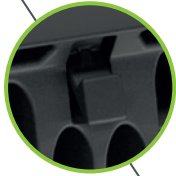
Sturdy and reliable

The composite edge impresses with its corrosion resistance, color stability, heat resistance for asphalt installation and UV resistance, even under extreme conditions.



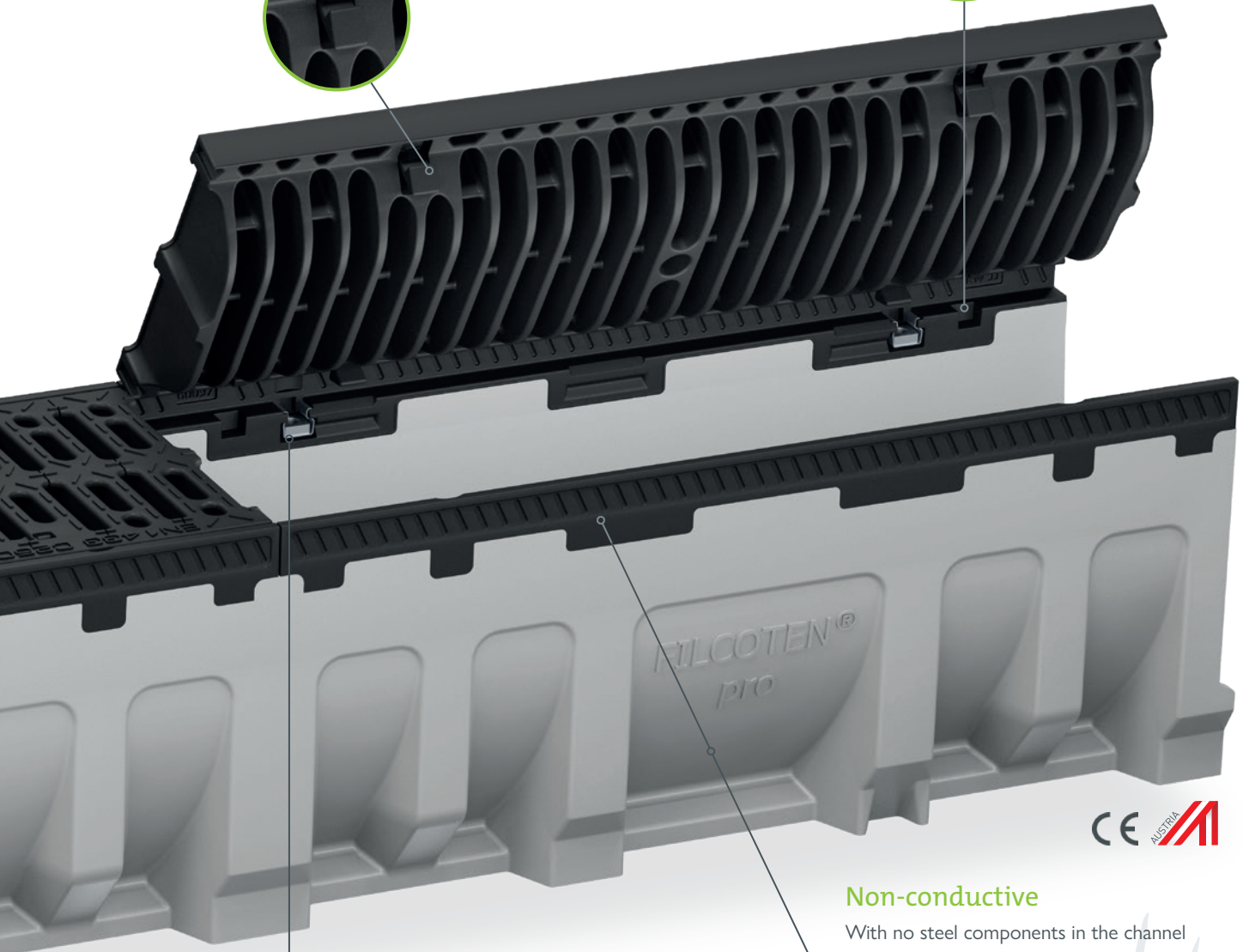
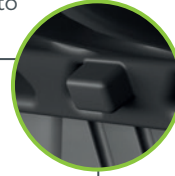
Securely held grating

The intelligent fiX locking system enables the grate to be secured in the channel using a simple four-point, quick-locking fastener.



Pins prevent longitudinal shift

The system's integrated longitudinal shift prevention feature further adds to the grating's stability.



Non-conductive

With no steel components in the channel body or the edging, the entire channel system is electrically non-conductive.

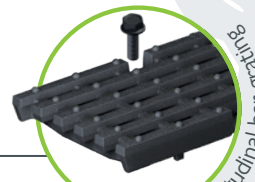
Flexible: fiX-locking or quick-locking system

As an alternative to the fiX locking system, ductile iron slotted gratings and longitudinal bar gratings can be fastened at 4 points when using the composite edge. While the cage nut makes any replacement and installation work quick and simple.

Grating overview: www.say.bg/gratings



ductile iron slotted grating



ductile iron longitudinal bar grating

¹⁾ Please note the separate installation details for BG-FILCOTEN[®] pro P, class D 400 is only achieved in conjunction with bolted 4-point cast iron gratings. – www.say.bg/pro-p_installation



GRASPOINTNER
Sustainable innovation.

BG-Graspointner GmbH
Gessenschwandt 39
4882 Oberwang

Phone: +43 6233 89 00-0

E-Mail: office@bg-graspointner.com

Web: www.bg-graspointner.com

More than just products – exciting
reference reports and technical articles
await you on our blog.
Scan now and get inspired!



www.say.bg/en/blog

Stay up to date!
Follow us on LinkedIn and find out all
about our latest projects, products and BG
highlights.



www.say.bg/linkedin



Member of
Climate Alliance
Austria



DGNB
Deutsche Gesellschaft für Nachhaltiges Bauen
German Sustainable Building Council



Your partner for BG-Graspointner drainage systems