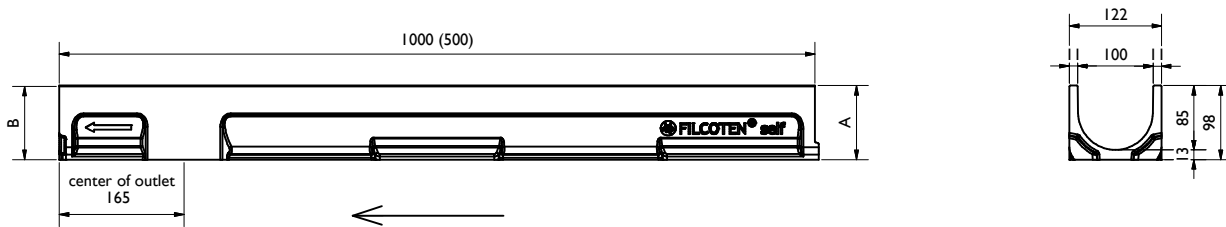


I. Rinne / Channel:

self NW100

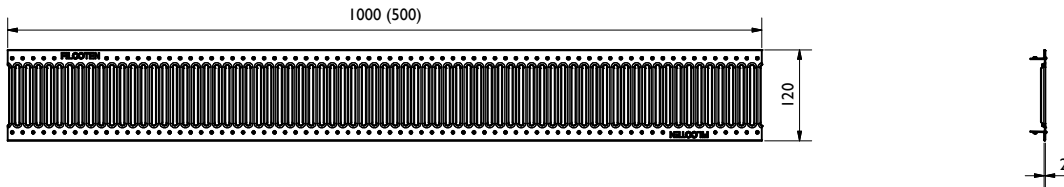


Rinne / channel - Maße / dimensions [mm]				
Typ	Höhe A height A	Höhe B height B	Länge length	BG code
0	98	98	1000	10710000
0	98	98	500	10710080

Legende / explanation:	
V:	verzinkter Stahl / galvanized steel
E:	Edelstahl / stainless steel
G:	Gußeisen / ductil iron
H:	Holz / wood

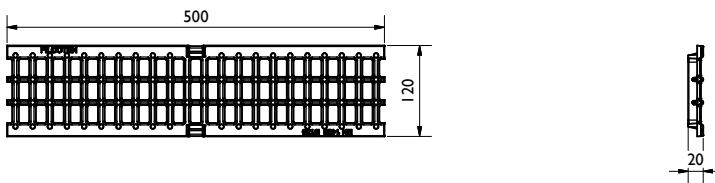
2. Stegrost / Slotted grating:

AI 5kN: SW5/80 V 17010232 (17010233)



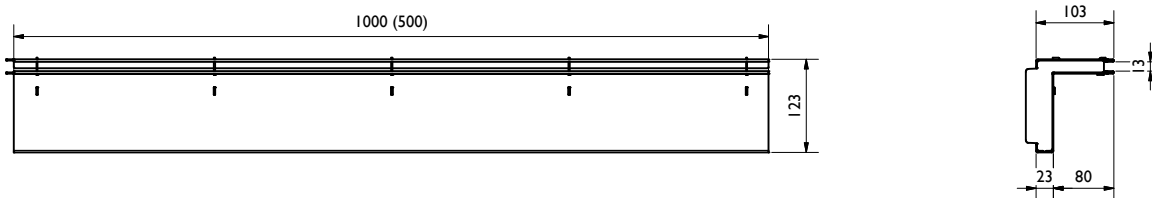
2. Gußrost / Ductil iron mash grating:

BI 25kN MW15/25: GJS 17010109



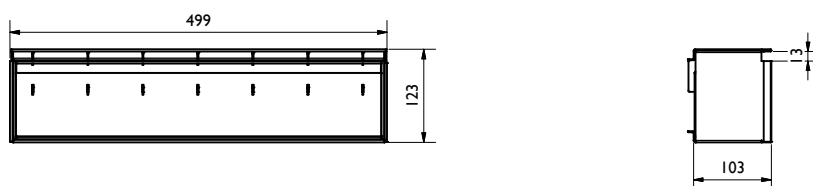
2. Schlitzaufsatz / Slot top:

BI 25kN SW12,5: V 17110237 (17110238), E 17110337 (17110338)



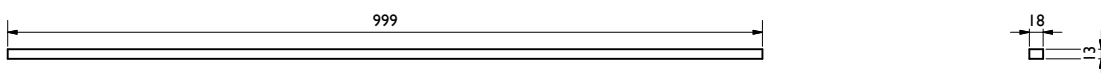
2. Revisionschacht / Maintenance unit:

BI 25kN SW12,5: V 17110297, E 17110397



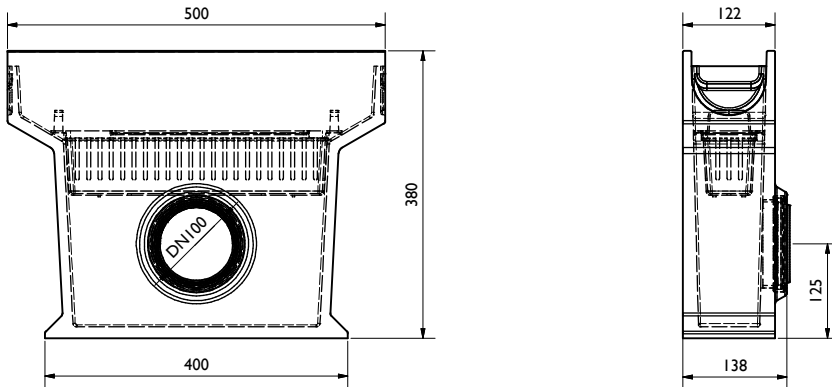
2. Bauzeitabdeckung / Construction time barrier SW 18:

H 37961



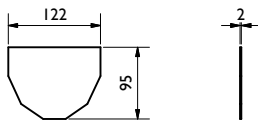
3. Sinkkasten+Schlammeimer / Sump unit+silt bucket:
(optional: Geruchsverschluss / Drain trap: 30056)

10710090

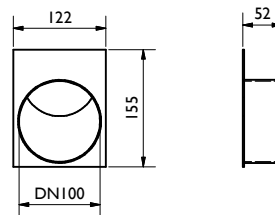


4. Stirn-/Endplatte / End cap:

V 19010221

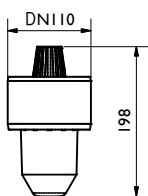


V 19010222



5. Geruchsverschluss für Bodenablauf
/ Drain trap for bottom outlet:

PVC 30019



5. Geruchsverschluss für Sinkkasten
/ Drain trap for silt bucket

PVC 30056

