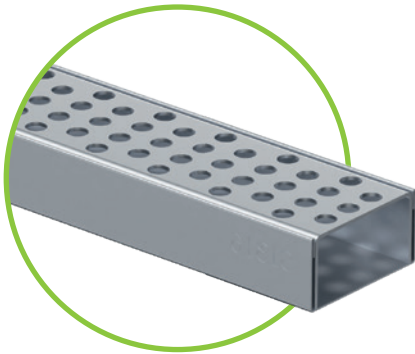




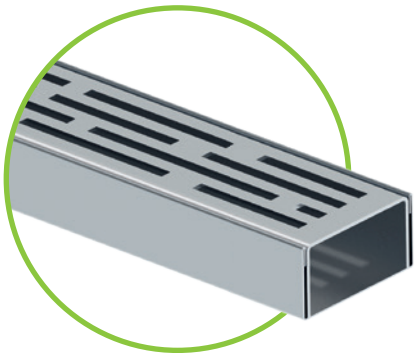
# BG-FLEX™ terrace channel



## BG-FLEX™ terrace channel, width 60 / 2.4" STAINLESS STEEL

for paving drainage on terraces and balconies

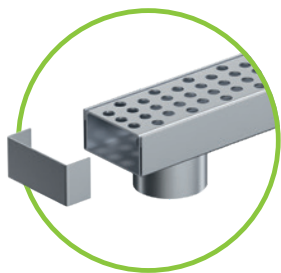
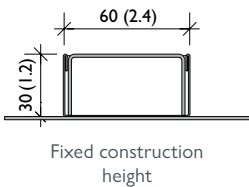
Item no.	Channels	Length mm (in)	Height mm (in)	Weight kg (lb)
21106321	TM terrace channel with anchor plate	1000 (40)	30 (1.2)	2.1 (4.6)
Outlet unit – material thickness: 1.50 mm (0.06 in)				
21106322	Outlet unit, outlet Ø 50 (2 in) with anchor plate	1000 (40)	30 (1.2)	2.1 (4.6)
21106331	SET, corner section	1000x1000 (40x40)	30 (1.2)	4.1 (9)



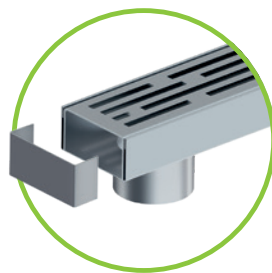
## BG-FLEX™ terrace channel, width 60 / 2.4", LINEAR STAINLESS STEEL

for paving drainage on terraces and balconies

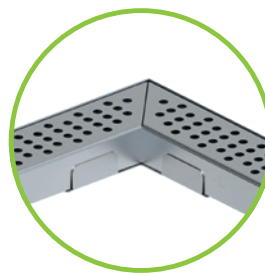
Item no.	LINEAR channel	Length mm (in)	Height mm (in)	Weight kg (lb)
Channel element – material thickness: 0.75 mm (0.03 in)				
21106325	Channel element	1000 (40)	30 (1.2)	2.0 (4.4)
Outlet unit – material thickness: 1.50 mm (0.06 in)				
21106326	Outlet unit, outlet Ø 50 (2 in) with anchor plate	1000 (40)	30 (1.2)	2.1 (4.6)
21106332	SET, corner section	1000x1000 (40x40)	30 (1.2)	4.0 (9)



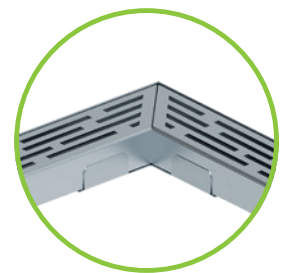
Outlet unit incl. grating and front cap and connecting cap, bottom outlet DN 50 (2 in)



Outlet unit LINEAR incl. front cap/connecting cap, bottom outlet DN 50 (2 in)

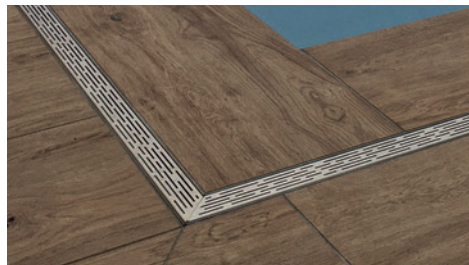


SET, corner section



SET, corner section LINEAR

# References





# Easy to install elegant design.

## Aesthetic and functional.

The TM terrace channel's narrow width of just 60 mm (2.4 in) gives it an inconspicuous elegance that makes it ideal for installation on terraces and garden areas. They can be laid simultaneously with the terrace plates. No special substructure is required.

## Fields of application

Ideal for laying on terraces in combination with flagstones. As it is quick and easy to install, this system is an excellent choice for both contractors and DIY enthusiasts.

## Channel cover

Made with a U-profile, the channel cover simply inserts into the channel body. Its brushed surface has appealingly looking  $\varnothing$  6 mm (1.4 in) perforations. The attached protective film guards against damage during installation.

## Subtle look

The channel width of 60 mm (2.4 in) creates an elegant and understated look.

## Element height

The element's low height of 30 mm (1.2 in) is excellently suited for laying in a terrace surface covering.

## Material

The channels are made of V2A stainless steel.  
Material thicknesses:  
Channel body: 0.75 mm (0.03 in)  
Cover: 1.5 mm (0.06 in)

## Face/transition plate

The U-shaped component can be used as a transition plate for a secure connection in the channel joint as well as an end cap for the channel run.

## Channel body with outlet

Channel bodies with a DN 50 (2 in) bottom outlet are also available.