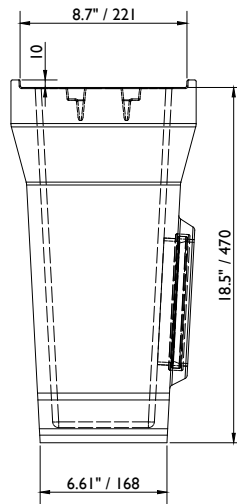
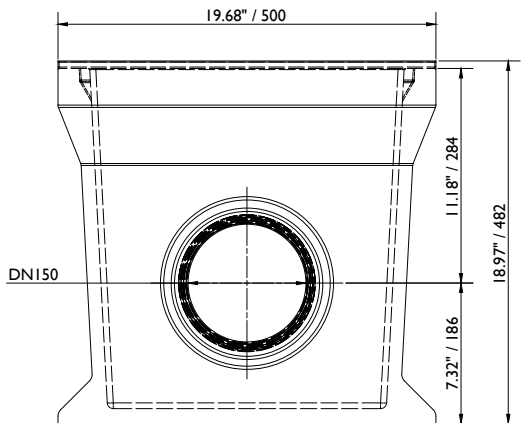
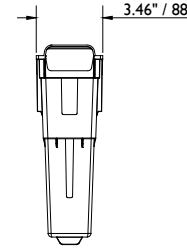
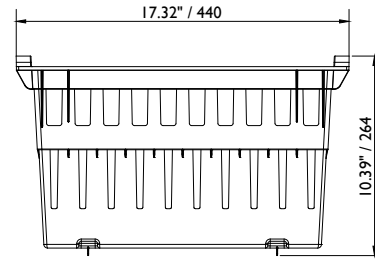


**Accessories**

Outlet-unit base-part



Sediment bucket



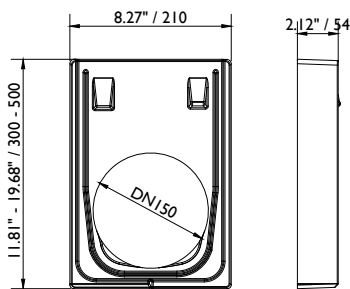
Accessories BG-FILCOTEN® one nominal width 150mm / 6" – heavy duty series

	Item no.	Accessories	Material	Weight	
				Kg	Lbs
○	15015180	Maintenance unit with ductile iron grating, no. 0, L = 1000 mm /39.37" l.)	FILCOTEN HPC	83.0	182.98
○	15015188	Maintenance unit with ductile iron grating, no. 40-0, L = 1000 mm /39.37" l.)	FILCOTEN HPC	111.0	244.71
○	15015170	Outlet unit upper part, with ductile iron grating, no. 0, L = 1000 mm /39.37" l.)	FILCOTEN HPC	79.0	174.16
○	15015178	Outlet unit upper part, with ductile iron grating, no. 40-0, L = 1000 mm /39.37" l.)	FILCOTEN HPC	108.0	238.09
○	19115095	Outlet unit lower part, outlet DN 150 / 6"	FILCOTEN HPC	32.8	72.31
○	22510	BG sediment bucket for sump unit, plastic	Plastic	0.4	0.88
○	19115100	Front / end cap, no. 0 , without outlet	FILCOTEN HPC	7.2	15.87
○	19115108	Front /end cap, no. 40-0, without outlet	FILCOTEN HPC	11.4	25.13
○	19115110	End cap with outlet, no. 0, outlet DN 150 / 6"	FILCOTEN HPC	5.2	11.46
○	19515118	End cap with outlet, no. 40-0, outlet DN 150 / 6"	FILCOTEN HPC	10.0	22.04
○	19115157	Adapter cap for stepped slope no. 0 / 40-0	FILCOTEN HPC	9.1	20.06
○	19115900	Lifting-hook (consisting of 2 pcs.) for BG-FILCOTEN one NW 150 / 6" , painted green	Fabricated steel	1.9	4.19
○	19000701	Profile for joint sealing, no. 0, L= 630 mm /24.8"			
○	17000702	Profile for joint sealing, no. 40-0, L= 1040 mm / 40.94"			

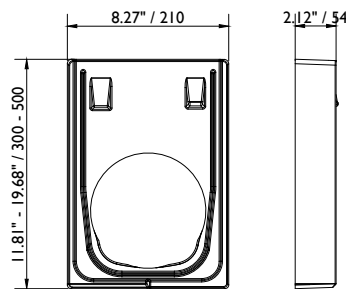
1.) cl. F 900 type M, Set of monolithic channel, cast-iron edge and bolted ductile iron grating

Adapter cap for stepped fall Nr.0 / 0-40

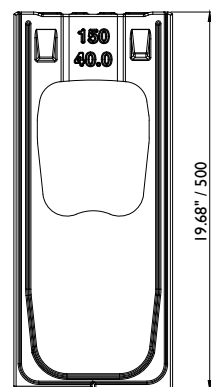
Endplate (with outlet)



Frontplate (without outlet)



View A



View B

