

Trench drain mini shallow body with integral galvanized steel rails - 39.40" (1000mm) length

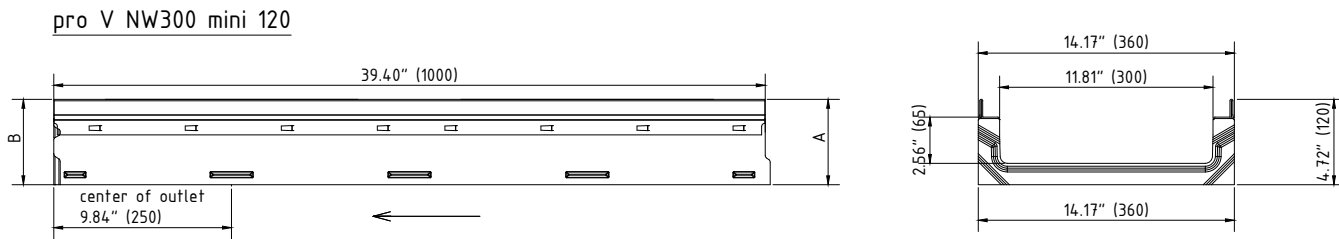
Channel body BG-FILCOTEN® pro V NW 300 (12") mini shallow body – extra heavy duty series

	Body part number galvanized rails	Channel type	Slope	Overall body depth		Maximum flow rate			Weight (less grate)	
				A (Min.)	B (Max.)	GPM *)	LPS *)	CFS *)	Lbs	Kg
○	10530200	mini 120	0 %	4.72" (120 mm)	4.72" (120 mm)	120.46	7.60	0.2684	83.56	37.90
○	10530201	mini 300	0%	11.81" (300 mm)	11.81" (120 mm)	559.14	37.80	1.3348	139.33	63.20

*) GPM = Gallons per minute, LPS = Liters per second, CFS = Cubic feet per second

SPECIFICATION: BG-FILCOTEN pro-V NW300 mini shallow, 14.17" (360mm) wide, 39.40"(1000mm) long, 4.72" (120mm) height, neutral BG-FILCOTEN trench drain system. Body is manufactured from a fibre-reinforced concrete based material. Bodies have interlocking ends, a radiused extract for efficient liquid drainage and a multiple anchoring ribs to securely hold the body into the concrete foundation. Each body is manufactured with an integral 0.16" (4mm) thick, extra heavy duty galvanized steel rails. Bottom outlets are available in 4"/6"/8" (100/150/200mm) No Hub bottom outlet connections. Grate options include heavy duty stainless steel and galvanized steel, and extra heavy duty ductile iron (Load Class A - F). Grates are secured to the body with a four point self-locking system or four times bolting system. End caps are also available.

FUNCTION: Used in commercial areas such as factories, warehouses, parking garages, car dealerships, gas stations, public and residential areas, parks, sports complexes, town squares, railway stations and cycle and foot paths. Ideal for environmentally sensitive areas because the body channels are free of resins, heavy metals, VOC and chemicals. Exceptional adhesion to surrounding concrete foundation due to the concrete composition of the body channels - resulting in a monolithic all concrete installation. Less breakage during transport and installation due to impact resistant, fibre-reinforced, UV resistant concrete material. Extra heavy duty integral cast iron rail allows for extra heavy duty commercial solid tire traffic patterns, hard wheel traffic applications.

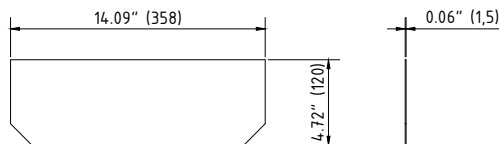


Accessories BG-FILCOTEN® pro V NW 300 (12") mini shallow – extra heavy duty series

	Item Nno.	Accessories	Material	LBS	kg
○	19030210	Front/end cap mini galvanized steel	galvanized	1.10	0.5
○	19011204	4" No Hub bottom outlet	galvanized	0.66	0.3
○	19016206	6" No Hub bottom outlet	galvanized	1.32	0.6
○	19021208	8" No Hub bottom outlet	galvanized	2.20	1.0

1) Mini shallow trench drain can be connected with 4" / 6" / 8" No Hub bottom outlet

mini: V 19030210



MATERIALS: Channels shall be manufactured from FILCOTEN HPC fiber composite with concrete edge cast iron rail. Minimum properties of FILCOTEN HPC fiber composite will be as follows:

Compressive strength:	11700 PSI
Flexural strength:	1700 PSI
Free of release agents:	YES
Water absorption sufficient for adhesion with concrete surfaces:	YES

Non flammable:	YES
U/V resistant:	YES
Recyclable 100%:	YES
Dilute acid and alkali resistant:	YES
Frost thaw salt tested as per EN1433 with a test temperature up to -40°C (-40°F):	YES
Material free of VOC, biocides, heavy metals:	YES