

# Strong but gentle to the environment:



The material combines the positive features of concrete channels with the benefits of resin bonded cements by using a patented fiber enriched formula instead of the environmentally harmful resins.

FILCOTEN® is still unrivaled in the market place, being admired for its sustainability and its unique channel strength. FILCOTEN® complies with the EN 1433 standard and the ASTM A12.6.3.2001 floor and trench drain standard.



Temperature, Frost and UV-resistant

High compressive strength

Lower transport costs, swifter installation

Product impact stability

100 % recyclable

Non- flammable



0 % harmful substances



Hydro BG Inc. USA  
134 Boynton Ave  
Plattsburgh, NY 12901  
USA

Phone: +1 514 932 5445  
Fax: +1 518 536 9007  
E-Mail: sales@hydrobg.com  
Web: www.hydrobg.com

Hydro BG Inc. North America  
642 De Courcelle, suite 206  
Montreal (QC), H4C 3C5  
CANADA

Phone: +1 514 932 5445  
Fax: +1 514 932 5775  
E-Mail: sales@hydrobg.com  
Web: www.hydrobg.com

BG 01092016 www.renn-design.de



**FILCOTEN®**  
pave slot top

High performance  
concrete trench drains.

## Design in harmony with nature.

## We always do the same: forge new paths.



Our products are in direct contact with the earth's water cycle.

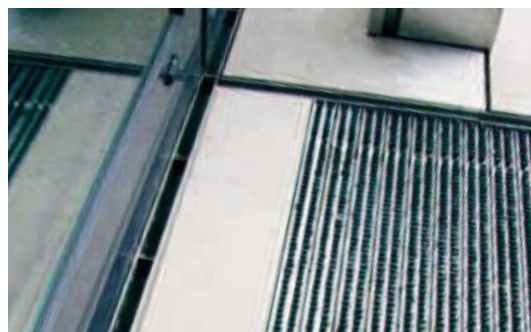
We have been asking ourselves the question of how advancement and sustainability can be combined for many years. We set one goal when developing FILCOTEN®:

„It should be very environmentally friendly.“

Impact strength and environment-friendliness are just two of the many features which make FILCOTEN® unique.

We are very proud of FILCOTEN®. The fact it is completely neutral for the environment, from “cradle to grave” and knowing FILCOTEN® has no negative effects on humans or nature, makes us confident we reached our goal of 100% sustainability.

FILCOTEN® slot top channel offers endless possibilities when it comes to installation and application.



## Stylish and stable

### FILCOTEN® pave slot top

With the FILCOTEN® pave slot top trench drain, design and drainage work hand in hand. Perfect for use in areas where a discreet look is preferred.

The narrow slot width ensures a discreet and elegant appearance, while the underlying trench drain body of FILCOTEN® will assure quality drainage.

#### Often used in:

- Terraces
- Balconies
- House entrances
- Garages
- Pedestrian areas
- Sports facilities

#### Channel geometry / surfacing

The flat inner surface of FILCOTEN® channels are highly crafted making each channel smooth, in order to minimize surface friction. This achieves the best possible flow and a superior self-cleaning effect.

**Prefabricated sealant groove**  
Sealant groove for waterproof installations.

#### FILCOTEN® pave slot top unit

When design is as important as function, the slot top trench drain is your only choice. Architecturally sophisticated yet durable, this trench drain comes with slot widths of 12.5 mm, and easily fits into the joint pattern of a floor surface.

load class C 250

#### Easy installation

Anchoring ribs ensure a secure bond and anchoring of the channel with the surrounding concrete bed.

#### Perfect fit

Intelligently distributed fixing points, both on the inner and outer sides of the rails, guarantees ideal bonding with the FILCOTEN® material.

#### Comprehensive product range:

- Discreet slot width of 12.5 mm
- Adapts easily to the joint pattern of a floor surface
- Ideal for use with paving stones, flagstones and natural stones

#### Accessories



Catch basin



Rebar clips



No Hub bottom outlet



Font-/end cap  
FILCOTEN®



Font-/end cap  
FILCOTEN®

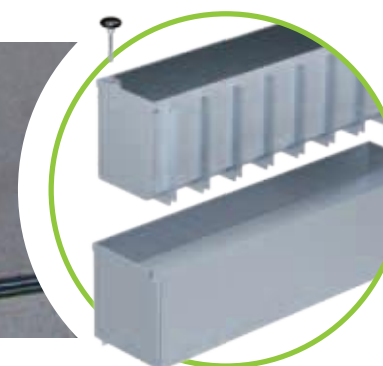


End cap with outlet  
FILCOTEN®

#### FILCOTEN® pave maintenance unit

The maintenance unit is integrated into the trench drain run, and won't disturb the design of a surface.

The inner part of the inspection shaft can easily be removed with a handle so as to facilitate a quick clean up.



You can receive detailed information about our products and installation directives under: [www.hydrobg.com](http://www.hydrobg.com)