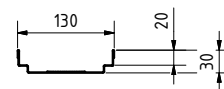
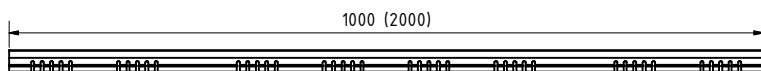
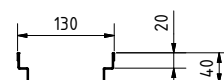
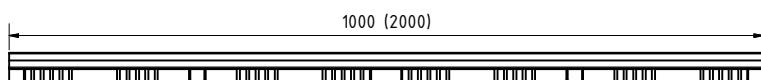


Goot:

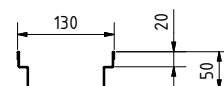
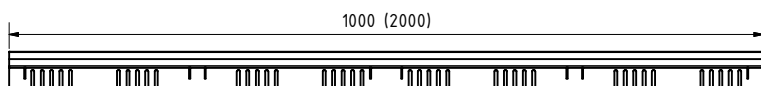
BH 30, tweezijdig geperforeerd V/E
BG code: zie tabel:



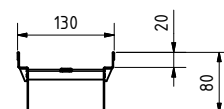
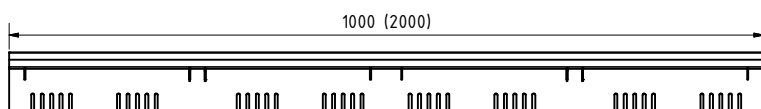
BH 40, tweezijdig geperforeerd V/E
BG code: zie tabel:



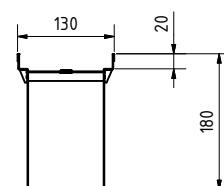
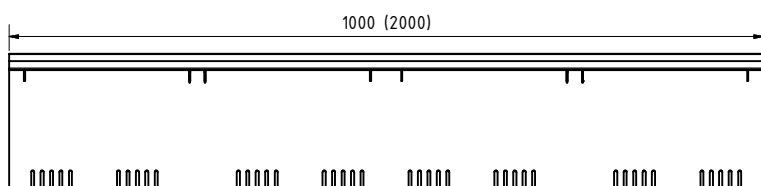
BH 50, tweezijdig geperforeerd V/E
BG code: zie tabel:



BH 80, tweezijdig geperforeerd V/E
BG code: zie tabel:



BH 180, tweezijdig geperforeerd V/E
BG code: zie tabel:



Goot - afmetingen [mm]					
Type	hoogte	lengte	gewicht	BG code V	BG code E
BG-FA RB 130 geperforeerd	30	1000	1,7 kg	23013201	23013301
BG-FA RB 130 geperforeerd	30	2000	3,3 kg	23013202	23013302
BG-FA RB 130 geperforeerd	40	1000	1,8 kg	23013203	23013303
BG-FA RB 130 geperforeerd	40	2000	3,6 kg	23013204	23013304
BG-FA RB 130 geperforeerd	50	1000	2,0 kg	23013205	23013305
BG-FA RB 130 geperforeerd	50	2000	4,0 kg	23013206	23013306
BG-FA RB 130 geperforeerd	80	1000	2,4 kg	23013207	23013307
BG-FA RB 130 geperforeerd	80	2000	4,8 kg	23013208	23013308
BG-FA RB 130 geperforeerd	180	1000	3,5 kg	23013211	23013311
BG-FA RB 130 geperforeerd	180	2000	7,0 kg	23013212	23013312
BG-FA RB 130 gesloten	30	1000	1,7 kg	23013221	23013321
BG-FA RB 130 gesloten	30	2000	3,3 kg	23013222	23013322
BG-FA RB 130 gesloten	40	1000	1,8 kg	23013223	23013323
BG-FA RB 130 gesloten	40	2000	3,6 kg	23013224	23013324
BG-FA RB 130 gesloten	50	1000	2,0 kg	23013225	23013325
BG-FA RB 130 gesloten	50	2000	4,0 kg	23013226	23013326
BG-FA RB 130 gesloten	80	1000	2,4 kg	23013227	23013327
BG-FA RB 130 gesloten	80	2000	4,8 kg	23013228	23013328
BG-FA RB 130 gesloten	180	1000	3,5 kg	23013231	23013331
BG-FA RB 130 gesloten	180	2000	7,0 kg	23013232	23013332

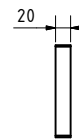
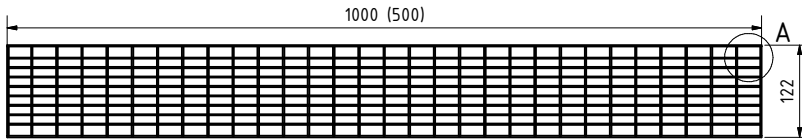
Alle goten zijn tweezijdig geperforeerd of gesloten verkrijgbaar

Legenda:	
V:	verzinkt staal
E:	rvs/inox

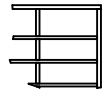
Roosters, afdekkingen:

mazenrooster: MW 30/10

BG code: V 24513201 (24513202), E 24513301 (24513302); 2,5 kg (1,3 kg):

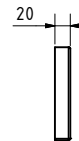
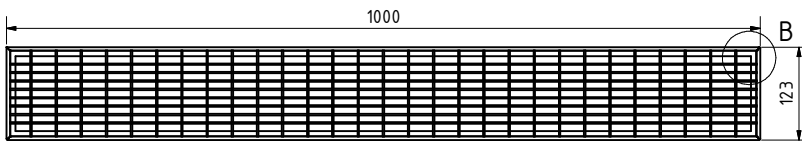


A (1 : 2)



mazenrooster met T-profiel: MW 30/10

BG code: V 23513203; 3,2 kg:

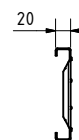
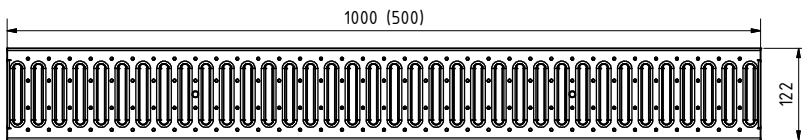


B (1 : 2)



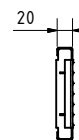
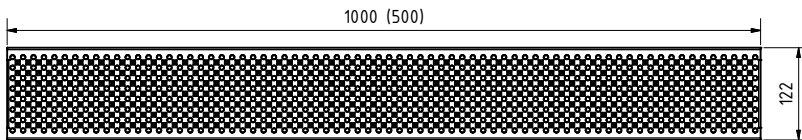
sleufrooster: SW 9/85

BG code: V 24513203 (24513204), E 24513303 (24513304); 2,0 kg (1,0 kg):



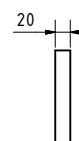
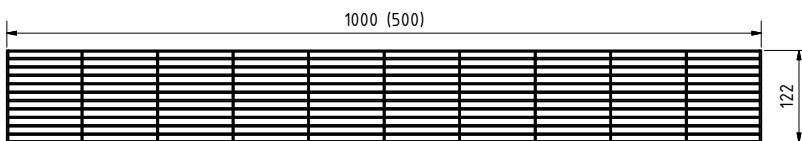
geperforeerd rooster: ø 6mm

BG code: V 24513205 (24513206), E 24513305 (24513306); 1,6 kg (0,8 kg):



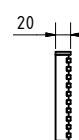
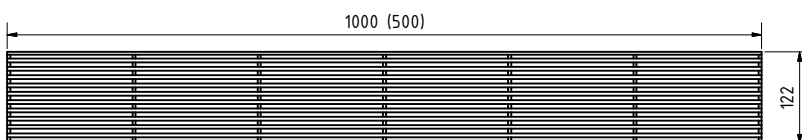
langsstaafrooster: SW 10mm

BG code: V 24513207 (24513208), E 24513307 (24513308); 3,9 kg (2,0 kg):



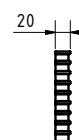
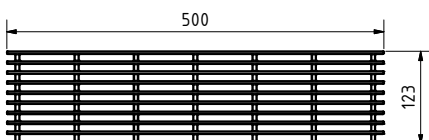
design-longsstaafrooster: SW 6mm

BG code: E 24513313 (24513314) 3,2 kg (1,6 kg):



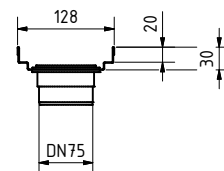
langsstaafrooster kunststof PP: SW 10mm

BG code: 23513205 0,2 kg:

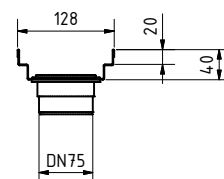
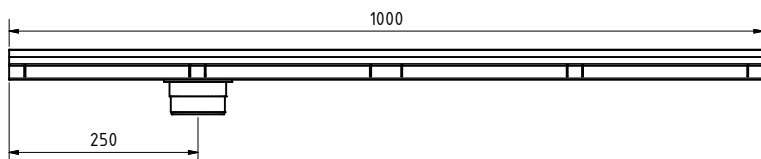


Toebehoren:

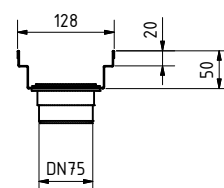
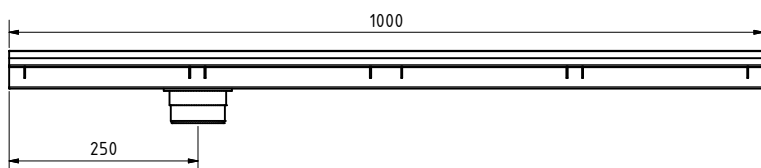
uitloopelement, DN 75, BH 30, gesloten
BG code: V 23013251, E 23013351; 1,5 kg:



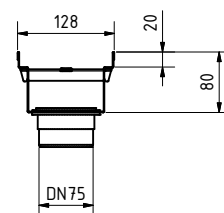
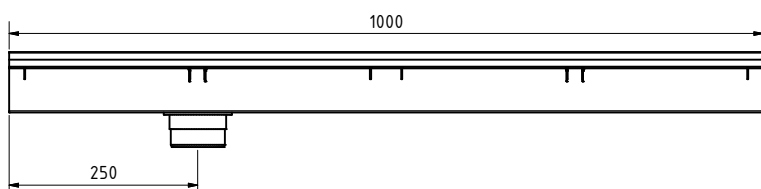
uitloopelement, DN 75, BH 40, gesloten
BG code: V 23013252, E 23013352; 1,7 kg:



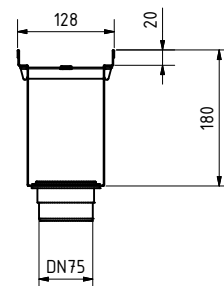
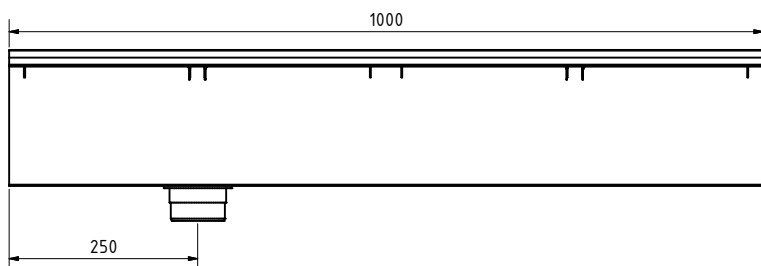
uitloopelement, DN 75, BH 50, gesloten
BG code: V 23013253, E 23013353; 1,9 kg:



uitloopelement, DN 75, BH 80, gesloten
BG code: V 23013254, E 23013354; 2,4 kg:



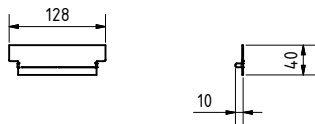
uitloopelement, DN 75, BH 180, gesloten
BG code: V 23013255, E 23013355; 4,0 kg:



Toebehoren:

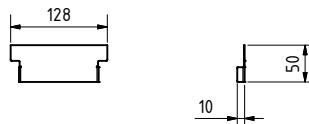
koplaat BH 30/40

BG code: V 23913221, E 23913321; 0,1 kg:



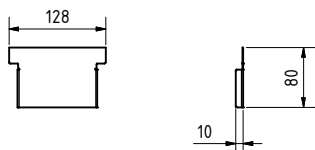
koplaat BH 50

BG code: V 23913222; 0,1 kg:



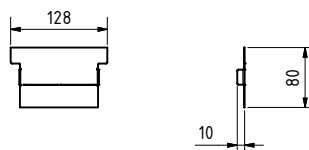
koplaat BH 80

BG code: V 23913223; 0,1 kg:



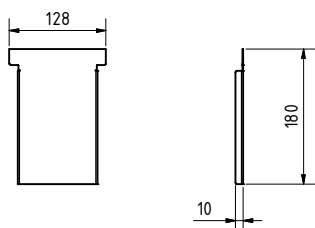
koplaat BH 50/80

BG code: E 23913322; 0,1 kg:



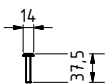
koplaat BH 180

BG code: V 23913224, E 23913323; 0,1 kg:



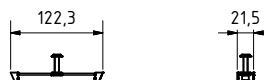
vergrendelingsbout (per meter 2 stuks nodig)

BG code: V 24909012, E 24909013; 0,1 kg:



vergrendelingsset RB 130, BH50

BG code: V 24900018, E 24900019; 0,1 kg:



verbindingselement

BG code: V 23913231, E 23913331; 0,1 kg:



steekkanaal:

BG code: V 37851 (37852), E 37861 (37862); 1,1 kg (2,2 kg):

