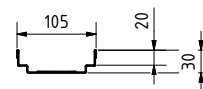
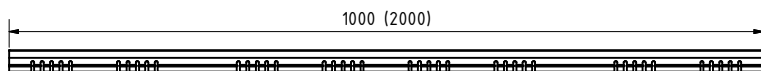
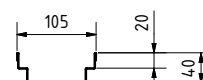
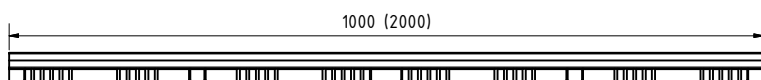


Rinne / channel:

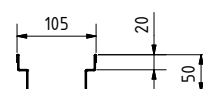
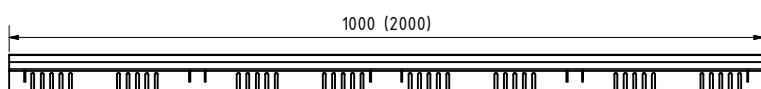
BH 30, beids. perf. / height 30, both-sided perf. / V/E
BG code: siehe Tabelle / see table:



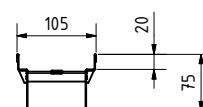
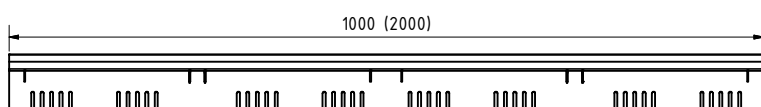
BH 40, beids. perf. / height 40, both-sided perf. / V/E
BG code: siehe Tabelle / see table:



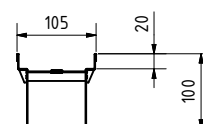
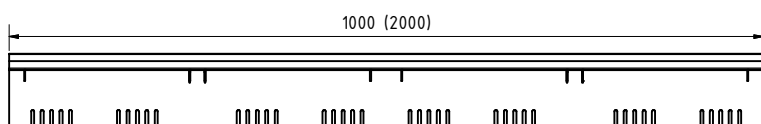
BH 50, beids. perf. / height 50, both-sided perf. / V/E
BG code: siehe Tabelle / see table:



BH 75, beids. perf. / height 75, both-sided perf. / V/E
BG code: siehe Tabelle / see table:



BH 100, beids. perf. / height 100, both-sided perf. / V/E
BG code: siehe Tabelle / see table:



Rinne / channel - Maße / dimensions [mm]					
Typ	Höhe height	Länge length	Gewicht weight	BG code V	BG code E
BG-FA RB 100 perforiert/perforated	30	1000	1,3 kg	23010201	23010301
BG-FA RB 100 perforiert/perforated	30	2000	2,6 kg	23010202	23010302
BG-FA RB 100 perforiert/perforated	40	1000	1,5 kg	23010203	23010303
BG-FA RB 100 perforiert/perforated	40	2000	2,9 kg	23010204	23010304
BG-FA RB 100 perforiert/perforated	50	1000	1,6 kg	23010205	23010305
BG-FA RB 100 perforiert/perforated	50	2000	3,2 kg	23010206	23010306
BG-FA RB 100 perforiert/perforated	75	1000	2,1 kg	23010207	23010307
BG-FA RB 100 perforiert/perforated	75	2000	4,1 kg	23010208	23010308
BG-FA RB 100 perforiert/perforated	100	1000	2,5 kg	23010209	23010309
BG-FA RB 100 perforiert/perforated	100	2000	4,9 kg	23010210	23010310
BG-FA RB 100 geschlossen/not perforated	30	1000	1,4 kg	23010221	23010321
BG-FA RB 100 geschlossen/not perforated	30	2000	2,8 kg	23010222	23010322
BG-FA RB 100 geschlossen/not perforated	40	1000	1,6 kg	23010223	23010323
BG-FA RB 100 geschlossen/not perforated	40	2000	3,1 kg	23010224	23010324
BG-FA RB 100 geschlossen/not perforated	50	1000	1,7 kg	23010225	23010325
BG-FA RB 100 geschlossen/not perforated	50	2000	3,4 kg	23010226	23010326
BG-FA RB 100 geschlossen/not perforated	75	1000	2,2 kg	23010227	23010327
BG-FA RB 100 geschlossen/not perforated	75	2000	4,3 kg	23010228	23010328
BG-FA RB 100 geschlossen/not perforated	100	1000	2,6 kg	23010229	23010329
BG-FA RB 100 geschlossen/not perforated	100	2000	5,1 kg	23010230	23010330

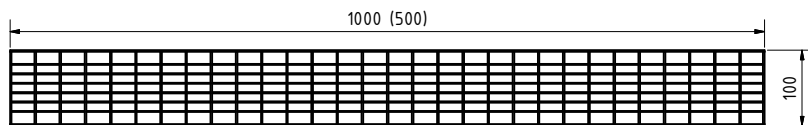
Alle Rinnen beidseitig perforiert und geschlossen erhältlich.
All channels available perforated on both sides and closed.

Legende / explanation:	
V:	verzinkter Stahl / galvanized steel
E:	Edelstahl / stainless steel

Roste, Abdeckungen / grates, covers:

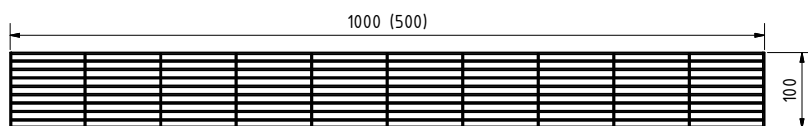
Gitterrost / Mesh grating: MW 30/10

BG code: V 23510201 (23510202), E 23510301 (23510302); 2,1 kg (1,1 kg):



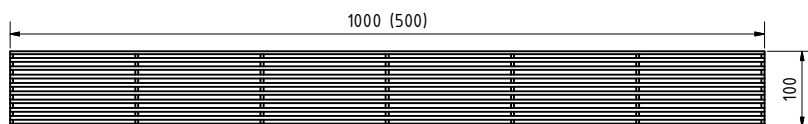
Längsstabrost / Longitudinal-bar grating: SW 10mm

BG code: V 23510203 (23510204), E 23510303 (23510304); 3,3 kg (1,7 kg):



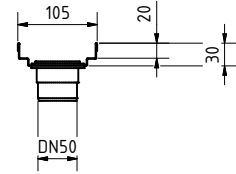
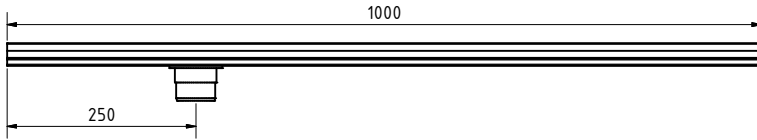
Design-Längsstabrost / Design-Longitudinal-bar grating: SW 6mm

BG code: E 23510305 (23510306) 2,6 kg (1,3 kg):

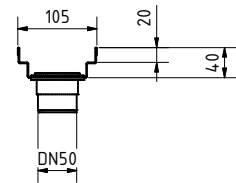
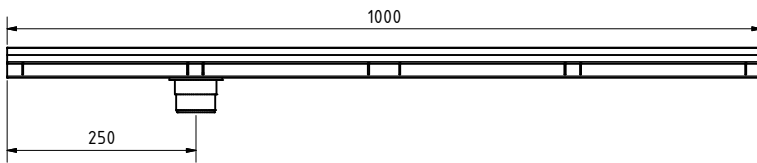


Zubehör / accessories:

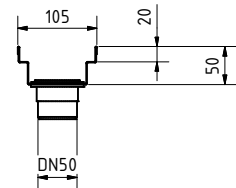
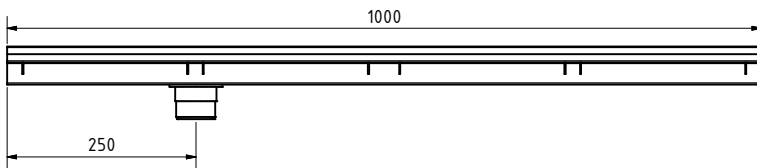
Ablaufteil, DN 50, BH 30, geschl. / outlet unit, DN 50, height 30, not perforated
BG code: V 23010251, E 23010351; 1,4 kg:



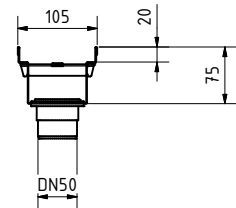
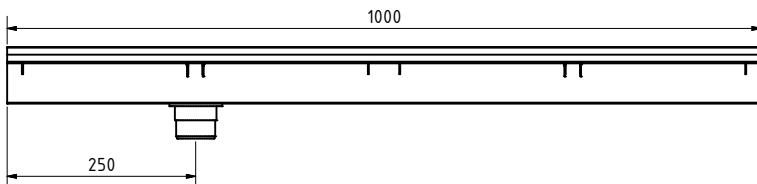
Ablaufteil, DN 50, BH 40, geschl. / outlet unit, DN 50, height 40, not perforated
BG code: V 23010252, E 23010352; 1,5 kg:



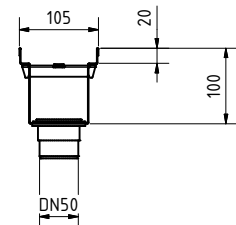
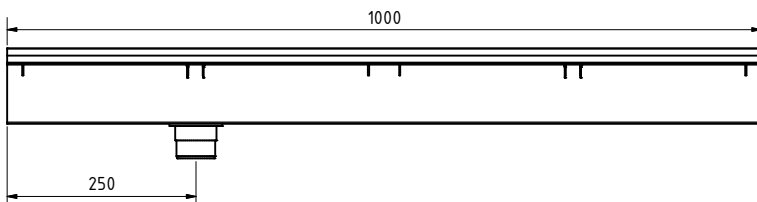
Ablaufteil, DN 50, BH 50, geschl. / outlet unit, DN 50, height 50, not perforated
BG code: V 23010253, E 23010353; 1,7 kg:



Ablaufteil, DN 50, BH 75, geschl. / outlet unit, DN 50, height 75, not perforated
BG code: V 23010254, E 23010354; 2,1 kg:

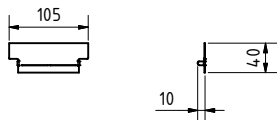


Ablaufteil, DN 50, BH 100, geschl. / outlet unit, DN 50, height 100, not perforated
BG code: V 23010255, E 23010355; 2,5 kg:

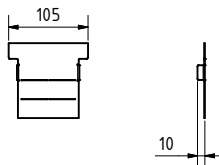


Zubehör / accessories:

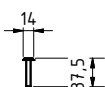
Stirnplatte BH 30/40 / frontplate height 30/40
BG code: V 23910221, E 23910321; 0,1 kg:



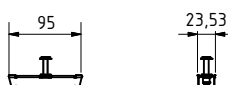
Stirnplatte BH 50/75/100 / frontplate height 50/75/100
BG code: V 23910222, E23910322; 0,1 kg:



Verschraubungsset (Bedarf je m 2 Stk.) /
locking set kit (2 pieces required per m)
BG code: V 24909012, E 24909013; 0,1 kg:



Verschraubungsset RB 100, BH40/50 /
locking set RB 100, BH40/50
BG code: V 24900022, E 24900023; 0,1 kg:



Überschubmuffe / connection sleeve
BG code: V 23910231, E 23910331; 0,1 kg:

