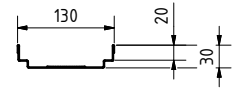
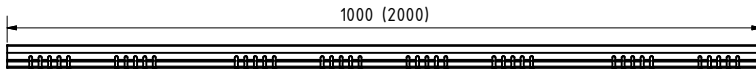
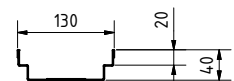
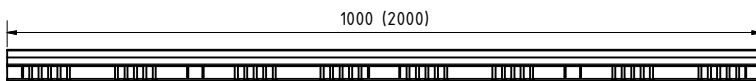


Rinne / channel:

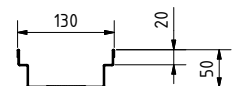
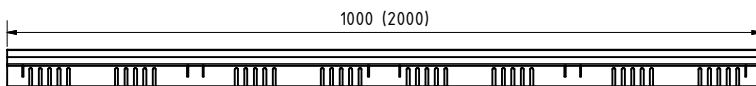
BH 30, beids. perf. / height 30, both-sided perf. / V/E  
BG code: siehe Tabelle / see table:



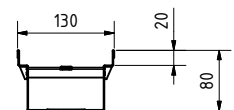
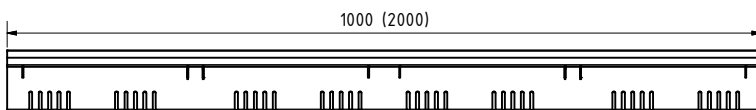
BH 40, beids. perf. / height 40, both-sided perf. / V/E  
BG code: siehe Tabelle / see table:



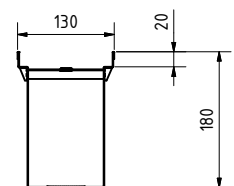
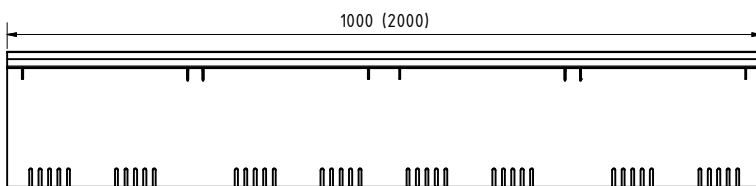
BH 50, beids. perf. / height 50, both-sided perf. / V/E  
BG code: siehe Tabelle / see table:



BH 80, beids. perf. / height 80, both-sided perf. / V/E  
BG code: siehe Tabelle / see table:



BH 180, beids. perf. / height 180, both-sided perf. / V/E  
BG code: siehe Tabelle / see table:



Rinne / channel - Maße / dimensions [mm]					
Typ	Höhe height	Länge length	Gewicht weight	BG code V	BG code E
BG-FA RB 130 perforiert/perforated	30	1000	1,7 kg	23013201	23013301
BG-FA RB 130 perforiert/perforated	30	2000	3,3 kg	23013202	23013302
BG-FA RB 130 perforiert/perforated	40	1000	1,8 kg	23013203	23013303
BG-FA RB 130 perforiert/perforated	40	2000	3,6 kg	23013204	23013304
BG-FA RB 130 perforiert/perforated	50	1000	2,0 kg	23013205	23013305
BG-FA RB 130 perforiert/perforated	50	2000	4,0 kg	23013206	23013306
BG-FA RB 130 perforiert/perforated	80	1000	2,4 kg	23013207	23013307
BG-FA RB 130 perforiert/perforated	80	2000	4,8 kg	23013208	23013308
BG-FA RB 130 perforiert/perforated	180	1000	3,5 kg	23013211	23013311
BG-FA RB 130 perforiert/perforated	180	2000	7,0 kg	23013212	23013312
BG-FA RB 130 geschlossen/not perforated	30	1000	1,7 kg	23013221	23013321
BG-FA RB 130 geschlossen/not perforated	30	2000	3,3 kg	23013222	23013322
BG-FA RB 130 geschlossen/not perforated	40	1000	1,8 kg	23013223	23013323
BG-FA RB 130 geschlossen/not perforated	40	2000	3,6 kg	23013224	23013324
BG-FA RB 130 geschlossen/not perforated	50	1000	2,0 kg	23013225	23013325
BG-FA RB 130 geschlossen/not perforated	50	2000	4,0 kg	23013226	23013326
BG-FA RB 130 geschlossen/not perforated	80	1000	2,4 kg	23013227	23013327
BG-FA RB 130 geschlossen/not perforated	80	2000	4,8 kg	23013228	23013328
BG-FA RB 130 geschlossen/not perforated	180	1000	3,5 kg	23013231	23013331
BG-FA RB 130 geschlossen/not perforated	180	2000	7,0 kg	23013232	23013332

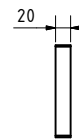
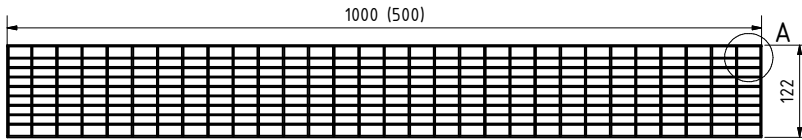
Alle Rinnen beidseitig perforiert und geschlossen erhältlich.  
All channels available perforated on both sides and closed.

Legende / explanation:	
V:	verzinkter Stahl / galvanized steel
E:	Edelstahl / stainless steel

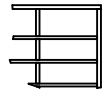
Roste, Abdeckungen / grates, covers:

Gitterrost / Mesh grating: MW 30/10

BG code: V 24513201 (24513202), E 24513301 (24513302); 2,5 kg (1,3 kg):

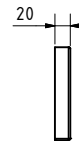
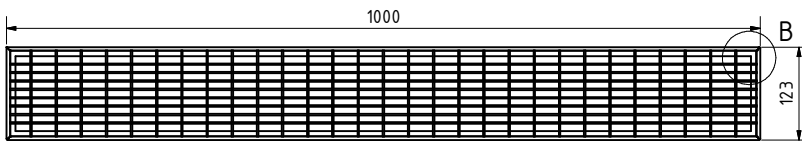


A ( 1 : 2 )



Maschenrost mit T-Einfassung/ Mesh grating with T-profile: MW 30/10

BG code: V 23513203; 3,2 kg:

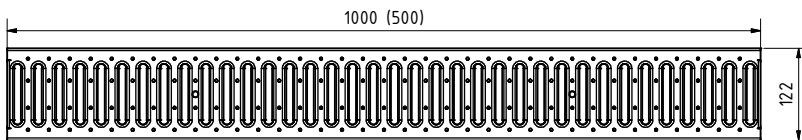


B ( 1 : 2 )



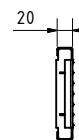
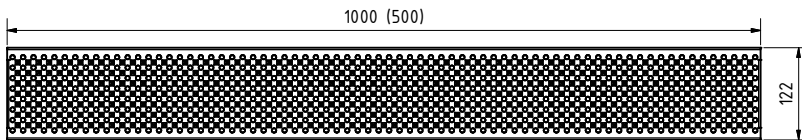
Stegrost / Slotted grating: SW 9/85

BG code: V 24513203 (24513204), E 24513303 (24513304); 2,0 kg (1,0 kg):



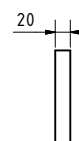
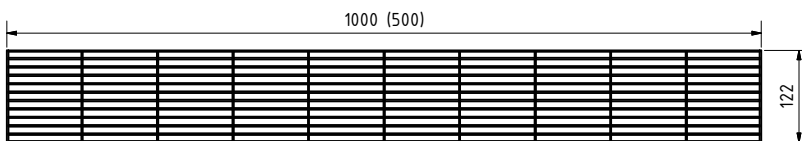
Lochrost / Perforated grating: ø 6mm

BG code: V 24513205 (24513206), E 24513305 (24513306); 1,6 kg (0,8 kg):



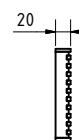
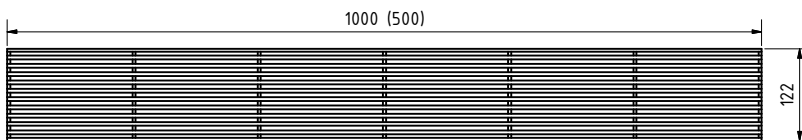
Längsstabrost / Longitudinal-bar grating: SW 10mm

BG code: V 24513207 (24513208), E 24513307 (24513308); 3,9 kg (2,0 kg):



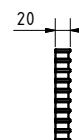
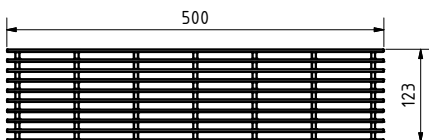
Design-Längsstabrost / Design-Longitudinal-bar grating: SW 6mm

BG code: E 24513313 (24513314) 3,2 kg (1,6 kg):



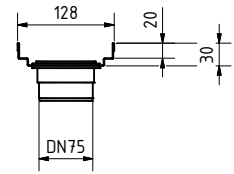
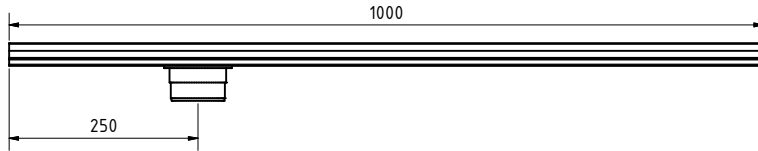
Längsstabrost Kunststoff PP / Longitudinal-bar grating plastic PP: SW 10mm

BG code: 23513205 0,2 kg:

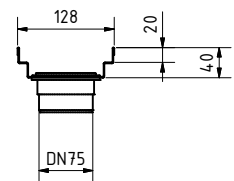
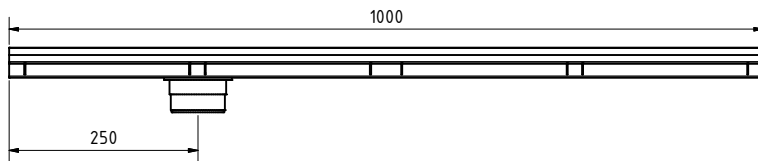


Zubehör / accessories:

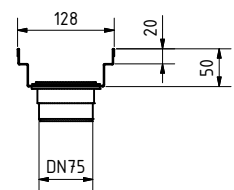
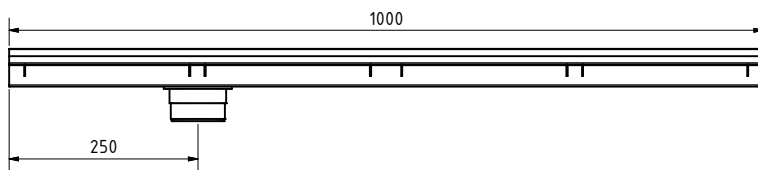
Ablaufteil, DN 75, BH 30, geschl. / outlet unit, DN 75, height 30, not perforated  
BG code: V 23013251, E 23013351; 1,5 kg:



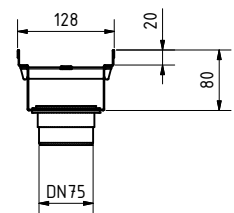
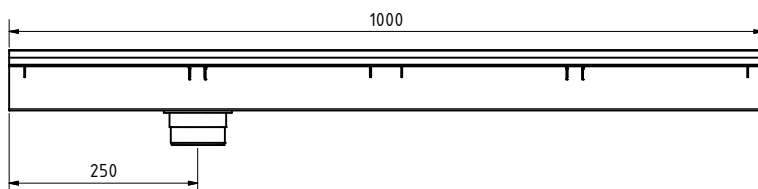
Ablaufteil, DN 75, BH 40, geschl. / outlet unit, DN 75, height 40, not perforated  
BG code: V 23013252, E 23013352; 1,7 kg:



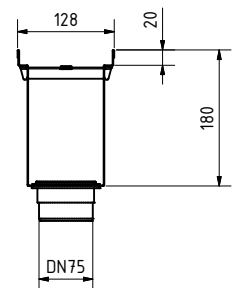
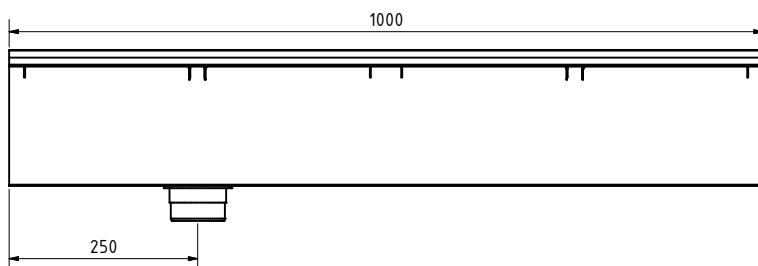
Ablaufteil, DN 75, BH 50, geschl. / outlet unit, DN 75, height 50, not perforated  
BG code: V 23013253, E 23013353; 1,9 kg:



Ablaufteil, DN 75, BH 80, geschl. / outlet unit, DN 75, height 80, not perforated  
BG code: V 23013254, E 23013354; 2,4 kg:

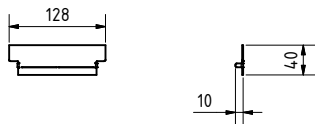


Ablaufteil, DN 75, BH 180, geschl. / outlet unit, DN 75, height 180, not perforated  
BG code: V 23013255, E 23013355; 4,0 kg:

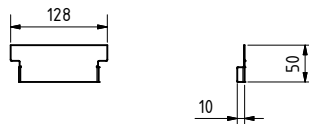


Zubehör / accessories:

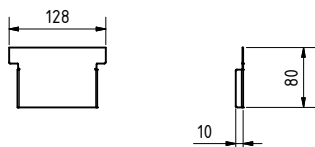
Stirnplatte BH 30/40 / frontplate height 30/40  
BG code: V 23913221, E 23913321; 0,1 kg:



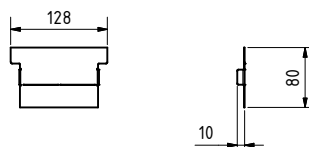
Stirnplatte BH 50 / frontplate height 50  
BG code: V 23913222; 0,1 kg:



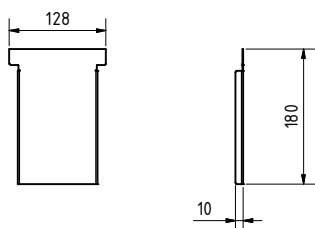
Stirnplatte BH 80 / frontplate height 80  
BG code: V 23913223; 0,1 kg:



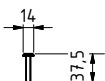
Stirnplatte BH 50/80 / frontplate height 50/80  
BG code: E 23913322; 0,1 kg:



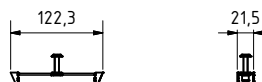
Stirnplatte BH 180 / frontplate height 180  
BG code: V 23913224, E 23913323; 0,1 kg:



Verschraubungsset (Bedarf je m 2 Stk.) /  
locking set kit (2 pieces required per m)  
BG code: V 24909012, E 24909013; 0,1 kg:



Verschraubungsset RB 130, BH50 /  
locking set RB 130, BH50  
BG code: V 24900018, E 24900019; 0,1 kg:



Überschubmuffe / connection sleeve  
BG code: V 23913231, E 23913331; 0,1 kg:



Stichkanal / branch canal:  
BG code: V 37851 (37852), E 37861 (37862); 1,1 kg (2,2 kg):

