



GRASPOINTNER  
Sustainable innovation.



As unique as your  
requirements.

**BG-FLEX**

BG-FA facade channel  
TM terrace channel  
TE terrace slot channels

Steel channel programme

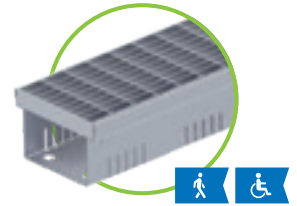
# References



## BG-FLEX FA facade channels

channel width 100, 130, 150, 200, 250

- lengths: 1000/2000 mm
- heights in mm:
  - width 100 – from 30 to 100 mm
  - width 130 – from 30 to 180 mm
  - width 150 – from 30 to 100 mm
  - width 200 – from 30 to 90 mm
  - width 250 – from 30 to 90 mm
- perforated / unperforated
- galvanised / stainless steel 1.4301



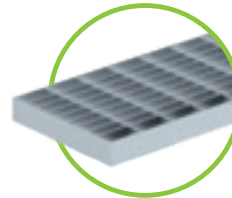
### Application area

- Facade
- Terraces, balconies
- Flat roofs, entrances

 [www.say.bg/en/bg-flex](http://www.say.bg/en/bg-flex)

### Gratings

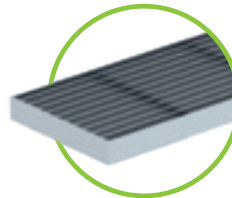
for channel widths 100, 130, 150, 200, 250



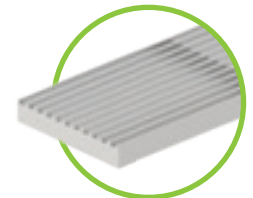
Mesh grating MW 30/10



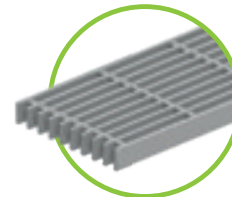
Slotted grating SW 9/85



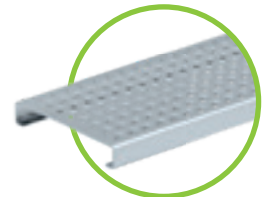
Longitudinal bar grating  
bar distance 10 mm



Design-longitudinal bar grating



Longitudinal bar grating  
made of plastic



Perforated grating  $\varnothing$  6 mm

 All gratings are walkable and wheelchair compliant!

# Maximum flexibility meets optimal performance.

BG-FLEX FA facade channel system.

BG-FLEX FA facade channels are available with fixed height or as height-adjustable versions with optionally available adjustable feet. They are exceptional for their high flexibility and their optimal performance.

## Application areas

Ideal drainage for facades, building entrances, terraces, balconies, flat roofs, roof terraces and similar areas.

walkable/wheelchair compliant

## Cover options

Mesh or slotted grating, perforated or design grating as well as longitudinal and cross bar gratings can be selected as covers.

## Two-sided perforation

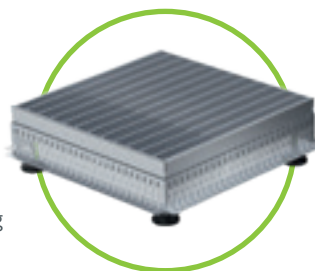
Accumulating precipitation is discharged on the sealing level through the perforation.

## Fixed element heights

Elements are available in different heights conforming to different standards for each channel width.

## Bracing and locking bars

The bracing bars ensure that channels with greater construction heights maintain their sturdy shape during installation. This prevents the channel walls from being compressed or pried apart. Optionally available sets of bolts can be used to bolt all mesh or slotted grating or longitudinal bar grating onto the bars.



## BG-FLEX FA gully top

- Elements can be adapted to any variation of height by using adjustable feet. After installation, a hexagon socket bolt can be turned from above to make adjustments.
- Allows easy access for cleaning/revision of the drain point at any time
- Additional point drainage

# Understated, yet remarkably efficient

BG-FLEX TE terrace slot channel system.

The BG-FLEX TE terrace slot channels with slot width 18 mm are blending optimally into the overall architecture without compromising drainage capacity. They offer a big advantage by allowing drainage on two levels: the flooring and the underlying floor plates.

## Application areas

Terraces, gardens, drainage on two water bearing levels

## The benefits at a glance:

- slot width 18 mm
- length: 1000 mm
- heights in mm:  
fixed: 100 / variable: 80-130
- perforated / unperforated
- material thickness: 1 mm
- stainless steel 1.4301
- walkable/wheelchair compliant, heelproof



[www.say.bg/en/bg-flex](http://www.say.bg/en/bg-flex)

# Easy to install Elegant design.

BG-FLEX TM terrace channel system.

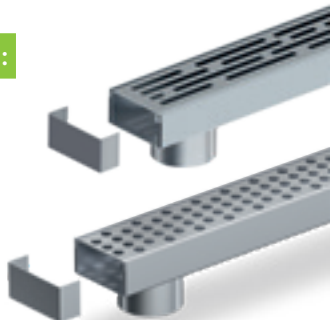
The BG-FLEX TM terrace channel's narrow width of just 60 mm gives it an inconspicuous elegance that is ideal for terraces and garden areas. They can be laid simultaneously with the terrace plates. No special substructure is required.

## Application areas

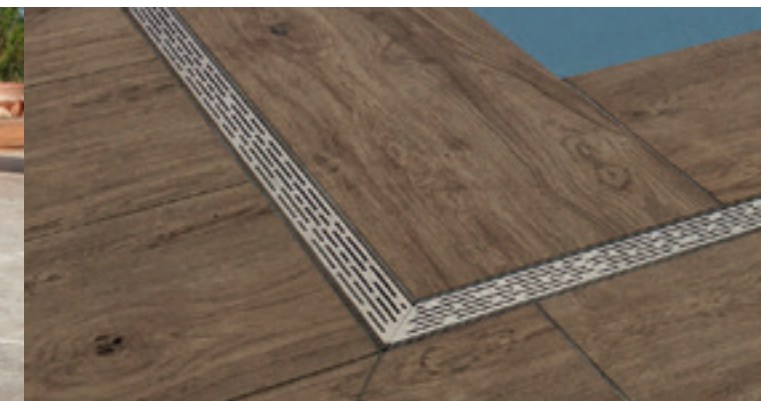
Terraces, balconies, laying in combination with tile coverings

## The benefits at a glance:

- channel width 60 mm
- length: 1000 mm
- height: 30 mm
- material thickness:  
channel body: 0,75 mm  
cover: 1.50 mm
- stainless steel 1.4301
- walkable/wheelchair compliant, heelproof



[www.say.bg/en/bg-flex](http://www.say.bg/en/bg-flex)





GRASPOINTNER  
Sustainable innovation.

BG-Graspointner GmbH  
Gessenschwandt 39  
4882 Oberwang  
AUSTRIA

Phone: +43 6233/89 00-0

Fax: +43 6233/89 00-303

E-mail: [office@bg-graspointner.com](mailto:office@bg-graspointner.com)

Web: [www.bg-graspointner.com](http://www.bg-graspointner.com)

BG

BG 01.2023