



GRASPOINTNER  
Sustainable innovation.



As unique  
as your  
requirements.

**BG-FLEX**

FA facade channel  
glass facade channel  
base plinth channel  
TE terrace slot channels  
TM terrace channel  
stone  
omega  
sigma tec

Steel channel systems



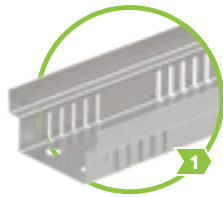
**Perfect** for everyday  
**challenges** & any  
**other challenges** too.

**BG-FLEX**

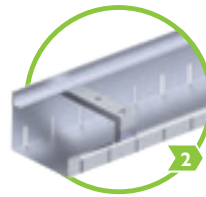
Our steel channel systems are as varied as your requirements. Known for our intelligent and innovative designs, continuous improvement, high-quality materials and reliable production processes, the strengths of BG shine through in our products. Even if your project is absolutely unique, we will still find the optimum solution with our individually customised products.



**GRASPOINTNER**  
Sustainable innovation.



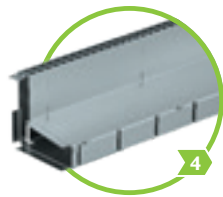
BG-FLEX FA  
facade channels  
accessible  
pages 4 – 17



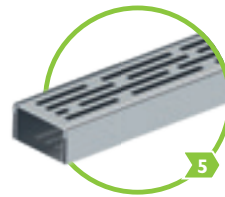
BG-FLEX glass  
facade channel  
accessible  
pages 18 – 19



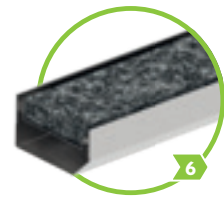
BG-FLEX base  
plinth channel  
accessible  
pages 20 – 21



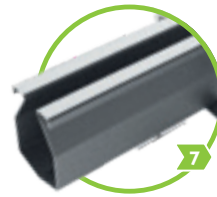
BG-FLEX TE  
terrace slot channels  
accessible  
pages 22 – 25



BG-FLEX TM  
terrace channels  
accessible  
pages 26 – 27



BG-FLEX stone  
terrace channel  
accessible  
pages 28 – 29



BG-FLEX omega  
up to class C 250  
pages 32 – 35



BG-FLEX sigma tec  
up to class C 250  
pages 36 – 39



Technical data: [www.say.bg/en/bg-flex](http://www.say.bg/en/bg-flex)

## BG-CLASSIC channel systems sorted by application areas:

Facade	1 2 3 4 5 6 7 8	Slot drainage	1 2 3 4 5 6 7 8
Flat roof	1 2 3 4 5 6 7 8	Terrace	1 2 3 4 5 6 7 8
Landscape construction	1 2 3 4 5 6 7 8	Underground car park	1 2 3 4 5 6 7 8
Wooden house	1 2 3 4 5 6 7 8	Wine yard	1 2 3 4 5 6 7 8
Parking decks & garages	1 2 3 4 5 6 7 8	Garage	1 2 3 4 5 6 7 8

# Maximum flexibility meets optimal performance.

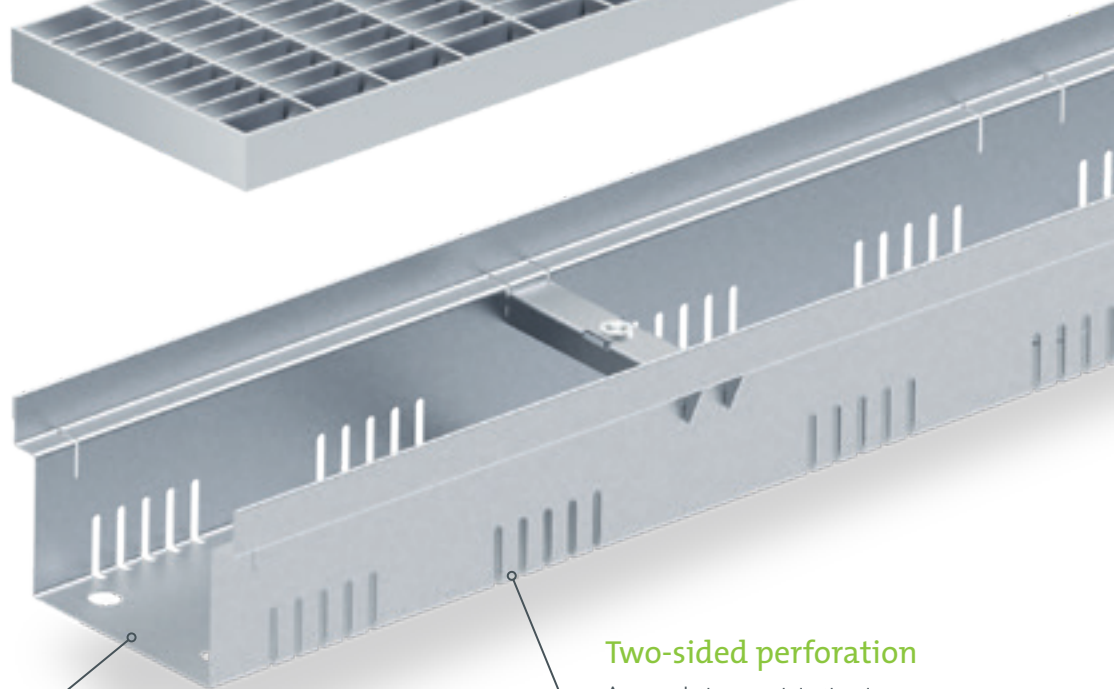
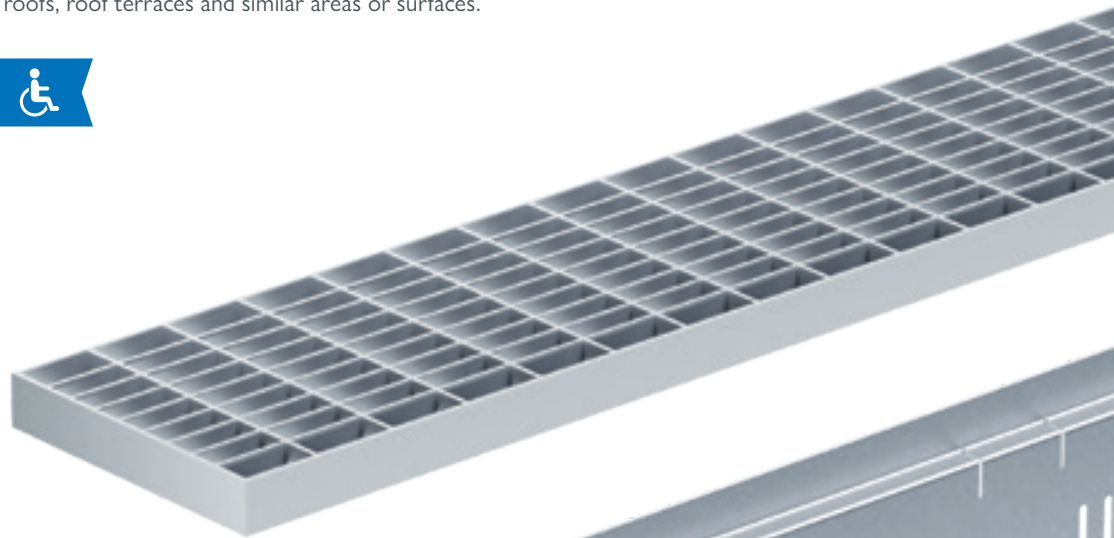
Made of steel or stainless steel, our facade channels stand out for their exceptional flexibility. By perfectly adapting to the situation in hand, they ensure the building is completely protected at all times.

## Extremely versatile application.

FA facade channels can be supplied in a wide array of fixed construction heights or as height-adjustable versions with optionally available adjustable feet.

## Fields of application

Ideal as drainage solutions for facades, front entrances, terraces, balconies, flat roofs, roof terraces and similar areas or surfaces.



## Various construction heights

Elements are available in different heights to match the corresponding channel width and in compliance with the relevant standard.

## Two-sided perforation

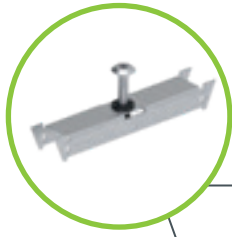
Accumulating precipitation is discharged to the sealing level through the perforation.



## Greater flexibility

As an optional extra, our BG-FLEX FA products can be fitted with adjustable feet to offer flexible height adjustment. Ideal for compensating for level differences or use on pre-installed flagging.



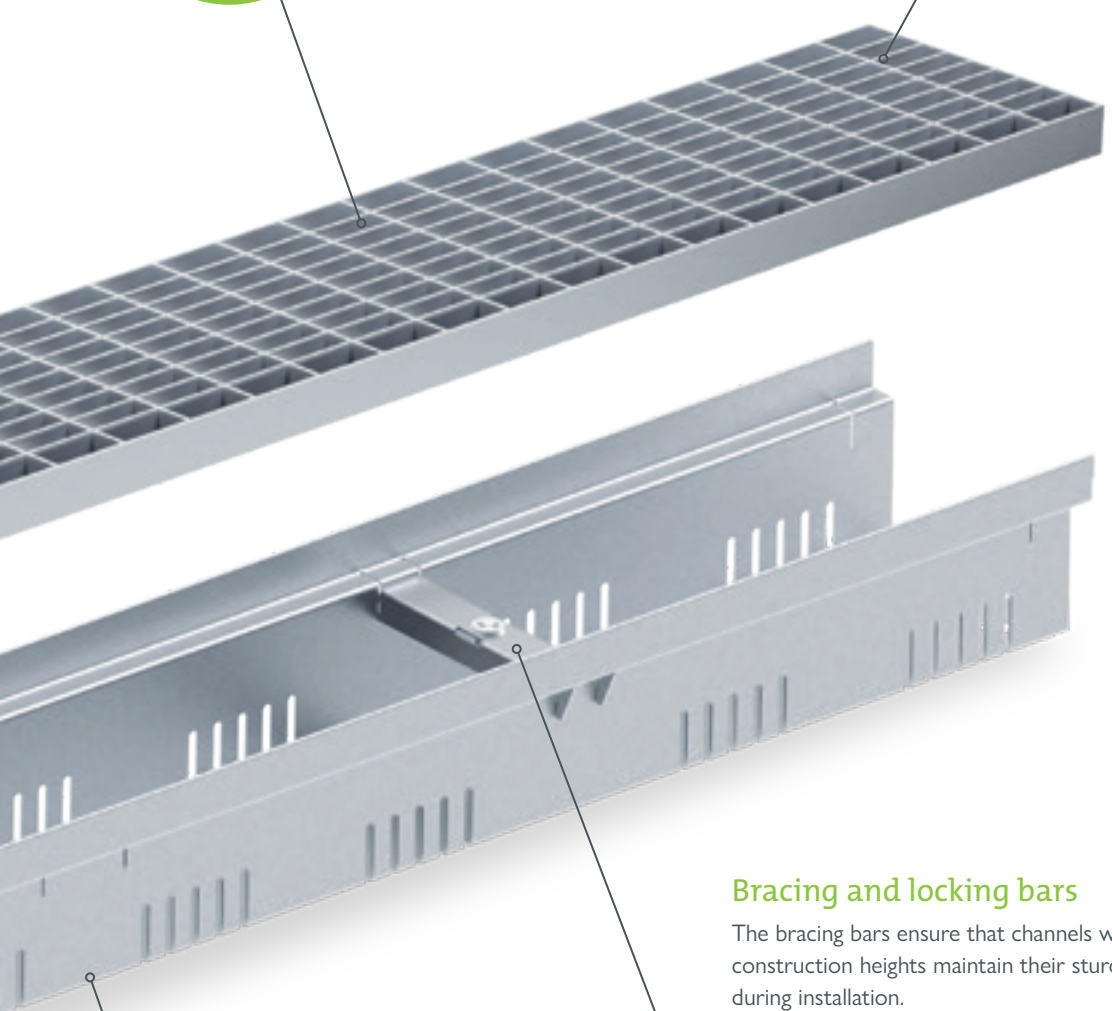


### Bolting-material

The covers can optionally be affixed in the channel using a set of bolts.

### Cover options

Mesh or slotted grating, perforated or design grating as well as longitudinal bar grating can be selected as coverings.



### Material

The channels are made of galvanised steel or 1.4301 stainless steel.

### Bracing and locking bars

The bracing bars ensure that channels with greater construction heights maintain their sturdy shape during installation.

This prevents the channel walls from being compressed or pried apart. Optionally available sets of bolts can be used to bolt all mesh or slotted grating or longitudinal bar grating onto the bars.

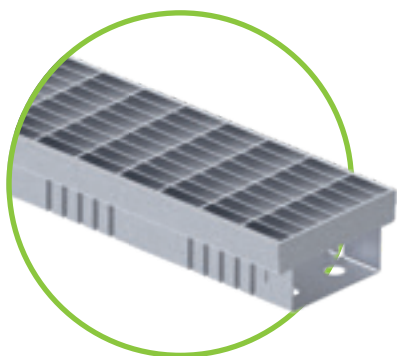
### The benefits at a glance:

- Highly stable yet lightweight steel channel body
- Channel elements with overall widths of 100, 130, 150, 200 and 250 mm
- Element lengths of 1000 or 2000 mm
- Construction heights of 30 to 180 mm ensure delivery of the ideal drainage and retention performance at all times
- Very variable due to optional height adjustment options using adjustable feet and a wide range of accessories
- Ideal for flat roofs, terraces, balconies, and much more
- Walkable/wheelchair compliant



# BG-FLEX FA

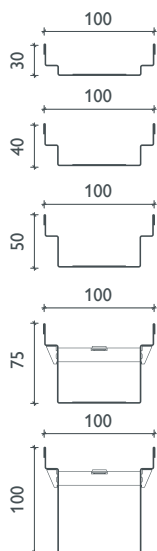
## Facade channel



### BG-FLEX FA facade channel, width 100 – perforated on both sides

Closed channel body made of galvanized or stainless steel

Item no. galvanized	Item no. stainless steel	Channel type <b>perforated</b> Material thickness: 1,00 mm	Length in mm	Height in mm	Weight in kg
23010201	23010301	Channel width 100	1000	30	1,3
23010202	23010302	Channel width 100	2000	30	2,6
23010203	23010303	Channel width 100	1000	40	1,5
23010204	23010304	Channel width 100	2000	40	2,9
23010205	23010305	Channel width 100	1000	50	1,6
23010206	23010306	Channel width 100	2000	50	3,2
23010207	23010307	Channel width 100	1000	75	2,1
23010208	23010308	Channel width 100	2000	75	4,1
23010209	23010309	Channel width 100	1000	100	2,5
23010210	23010310	Channel width 100	2000	100	4,9



### BG-FLEX FA facade channel, width 100 – closed

Closed channel body made of galvanized or stainless steel

Item no. galvanized	Item no. stainless steel	Channel type <b>closed</b> Material thickness: 1,00 mm	Length in mm	Height in mm	Weight in kg
23010221	23010321	Channel width 100	1000	30	1,4
23010222	23010322	Channel width 100	2000	30	2,8
23010223	23010323	Channel width 100	1000	40	1,6
23010224	23010324	Channel width 100	2000	40	3,1
23010225	23010325	Channel width 100	1000	50	1,7
23010226	23010326	Channel width 100	2000	50	3,4
23010227	23010327	Channel width 100	1000	75	2,2
23010228	23010328	Channel width 100	2000	75	4,3
23010229	23010329	Channel width 100	1000	100	2,6
23010230	23010330	Channel width 100	2000	100	5,1

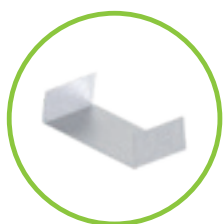
**i** Further heights on request

**i** For a wider array of accessories, incl. more images = page 16 - 17

## Accessories

for BG-FLEX FA Channel width 100

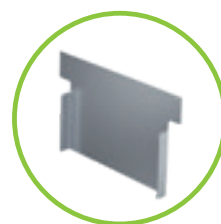
Item no. galvanised	Item no. stainless steel	Accessories	Height in mm	Weight in kg
23010251	23010351	Outlet unit DN 50, width 100, length = 1000 mm	30	1,4
23010252	23010352	Outlet unit DN 50, width 100, length = 1000 mm	40	1,5
23010253	23010353	Outlet unit DN 50, width 100, length = 1000 mm	50	1,7
23010254	23010354	Outlet unit DN 50, width 100, length = 1000 mm	75	2,1
23010255	23010355	Outlet unit DN 50, width 100, length = 1000 mm	100	2,5
23910221	23910321	Front cap, width 100	30, 40	0,1
23910222	23910322	Front cap, width 100	50, 75, 100	0,1
23910231	23910331	FA connection sleeve for channels	50, 75, 100	0,1
24909012	24909013	FA flat head bolts for fastening mesh, slotted and longitudinal bar gratings (requirement per m: 2 pcs.)		0,1
24900022	24900023	FA bolting-material set for mesh and longitudinal bar gratings: Locking bar incl. press nut and flat head screw for CH 40/50 (requirement per m: 2 pcs.)		0,1



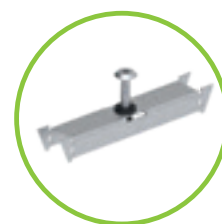
FA connection sleeve



FA outlet unit with outlet pipe



FA front caps




FA locking bar and pan head screw

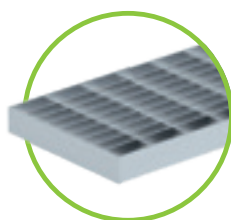
## Gratings

for BG-FLEX FA Channel width 100

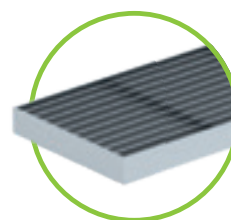
Item no. galvanised	Item no. stainless steel	Gratings	Dimensions in mm	Slot-/mesh- width in mm	Pcs./Pallet	Weight in kg pcs.	Inlet cross-section
23510201	23510301	1 Mesh grating	1000/100/20/2	MW 30/10	238	2,1	815 cm <sup>2</sup> /m
23510202	23510302		500/100/20/2	MW 30/10	56	1,1	815 cm <sup>2</sup> /m
23510203	23510303	2 Longitudinal bar grating	1000/100/20/2	Bar distance 10 mm	238	3,3	785 cm <sup>2</sup> /m
23510204	23510304		500/100/20/2	Bar distance 10 mm	56	1,7	785 cm <sup>2</sup> /m
-	23510305	3 Design-longitudinal bar grating	1000/100/20/2	Bar distance 6 mm	224	2,6	504 cm <sup>2</sup> /m
-	23510306		500/100/20/2	Bar distance 6 mm	48	1,3	504 cm <sup>2</sup> /m



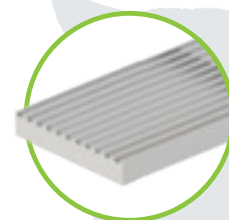
All FA facade channels incl. gratings are walkable and wheelchair-accessible! 



1 Mesh grating MW 30/10 galvanised or stainless steel V2A



2 Longitudinal bar grating, bar distance 10 galvanised or stainless steel V2A

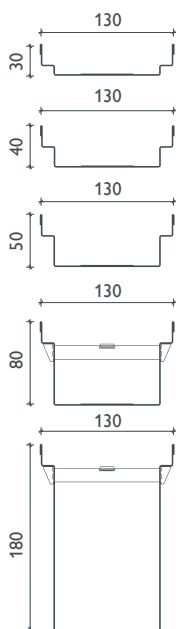
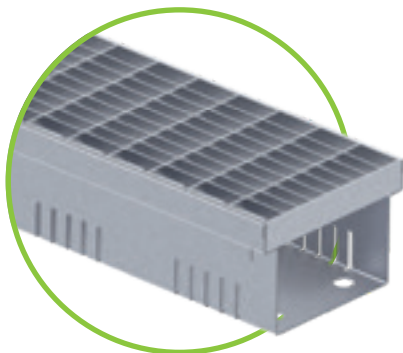


3 Design-longitudinal bar grating stainless steel V2A



# BG-FLEX<sup>FA</sup>

## Facade channel



### BG-FLEX FA facade channel, width 130 – STAINLESS STEEL

Closed channel body made of galvanized or stainless steel

Item no. galvanized	Item no. stainless steel	channel type <b>perforated</b> Material thickness: 1.00 mm	Length in mm	Height in mm	Weight in kg
23013201	23013301	Channel width 130	1000	30	1,7
23013202	23013302	Channel width 130	2000	30	3,3
23013203	23013303	Channel width 130	1000	40	1,8
23013204	23013304	Channel width 130	2000	40	3,6
23013205	23013305	Channel width 130	1000	50	2,0
23013206	23013306	Channel width 130	2000	50	4,0
23013207	23013307	Channel width 130	1000	80	2,4
23013208	23013308	Channel width 130	2000	80	4,8
23013211	23013311	Channel width 130	1000	180	3,5
23013212	23013312	Channel width 130	2000	180	7,0

### BG-FLEX FA facade channel, width 130 – closed

Closed channel body made of galvanized or stainless steel

Item no. galvanized	Item no. stainless steel	Channel type <b>closed</b> Material thickness: 1.00 mm	Length in mm	Height in mm	Weight in kg
23013221	23013321	Channel width 130	1000	30	1,7
23013222	23013322	Channel width 130	2000	30	3,3
23013223	23013323	Channel width 130	1000	40	1,8
23013224	23013324	Channel width 130	2000	40	3,6
23013225	23013325	Channel width 130	1000	50	2,0
23013226	23013326	Channel width 130	2000	50	4,0
23013227	23013327	Channel width 130	1000	80	2,4
23013228	23013328	Channel width 130	2000	80	4,8
23013231	23013331	Channel width 130	1000	180	3,5
23013232	23013332	Channel width 130	2000	180	7,0

### Accessories

for BG-FLEX FA Channel width 130

Item no. galvanized	Item no. stainless steel	Accessories	Height in mm	Weight in kg
23013251	23013351	Outlet unit DN 75, width 130, length = 1000 mm	30	1,5
23013252	23013352	Outlet unit DN 75, width 130, length = 1000 mm	40	1,7
23013253	23013353	Outlet unit DN 75, width 130, length = 1000 mm	50	1,9
23013254	23013354	Outlet unit DN 75, width 130, length = 1000 mm	80	2,4
23013255	23013355	Outlet unit DN 75, width 130, length = 1000 mm	180	4,0
23913221	23913321	Front cap, width 130	30, 40	0,1
23913222	23913322	Front cap, width 130	50	0,1
23913223	23913323	Front cap, width 130	80	0,1
23913224	–	Front cap, width 130	180	0,1
23913231	23913331	FA connection sleeve for channels with CH 50, 80, 180	28	0,1
24909012	24900013	FA flat head bolts for fastening mesh, slotted and longitudinal bar gratings (requirement per m: 2 pcs.)		0,1
24900018	24900019	FA bolting-material set for mesh and longitudinal bar gratings: locking bar incl. press nut and pan head screw for CH 40/50 (required per m: 2 pcs.)		0,1

**i** Other construction heights on request

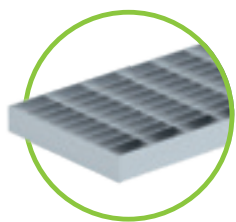
**i** For a wider array of accessories, incl. more images = page 16 - 17



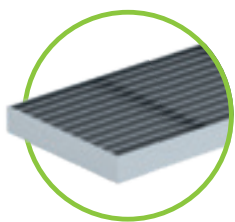
# Gratings

for BG-FLEX FA Channel width 130

Item no. galvanised	Item no. stainless steel	Gratings	Dimensions in mm	Slot/mesh width in mm	Pcs./Pallet	Weight in kg pcs.	Inlet cross-section
24513201	24513301	1 Mesh grating	1000/122/20	MW 30/10	120	2,5	925 cm <sup>2</sup> /m
24513202	24513302		500/122/20	MW 30/10	60	1,3	925 cm <sup>2</sup> /m
23513203		2 Mesh grating	1000/122/20	MW 30/10	156	3,2	760 cm <sup>2</sup> /m
24513205	24513305	3 Longitudinal bar grating	1000/122/20	Bar distance 10 mm	120	3,9	970 cm <sup>2</sup> /m
24513206	24513306		500/122/20	Bar distance 10 mm	60	2,0	970 cm <sup>2</sup> /m
24513203	24513303	4 Slotted grating	1000/122/20	SW 9/85	120	2,0	225 cm <sup>2</sup> /m
24513204	24513304		500/122/20	SW 9/85	60	1,0	225 cm <sup>2</sup> /m
24513205	24513305	5 Perforated grating	1000/122/20	Ø 6 mm	120	1,6	160 cm <sup>2</sup> /m
24513206	24513306		500/122/20	Ø 6 mm	60	0,8	160 cm <sup>2</sup> /m
-	24513313	6 Design-longitudinal bar grating	1000/122/20	Bar distance 6 mm	120	3,2	720 cm <sup>2</sup> /m
-	24513314		500/122/20	Bar distance 6 mm	40	1,6	720 cm <sup>2</sup> /m



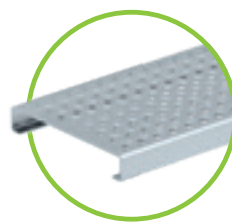
1 Mesh grating MW 30/10 galvanised or stainless steel V2A



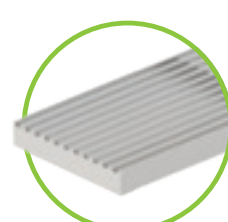
3 Longitudinal bar grating, bar distance 10 galvanised or V2A stainless steel



4 Slotted grating SW 9/85 galvanised or V2A stainless steel



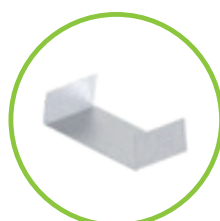
5 Perforated grating Ø 6 mm galvanised or V2A stainless steel



6 Design-longitudinal bar grating V2A stainless steel



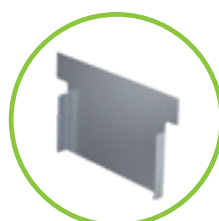
All FA façade channels incl. gratings are walkable and wheelchair-accessible!  



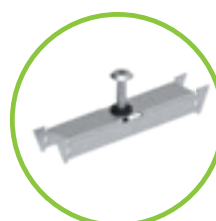
FA connection sleeve



FA outlet unit with outlet pipe



FA front caps

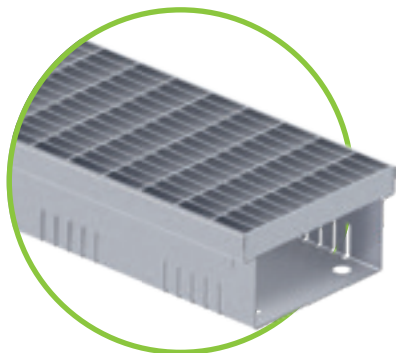


FA locking bar and pan head screw



# BG-FLEX FA

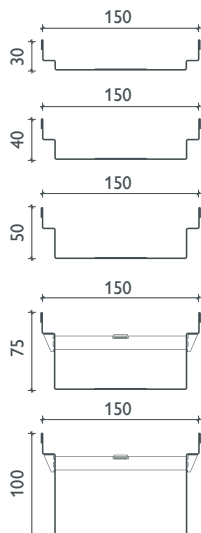
## Facade channel



### BG-FLEX FA facade channel, width 150 – perforated on both sides

Channel body made of galvanised or stainless steel

Item no. galvanised	Item no. stainless steel	Channel type <b>perforated</b> Material thickness: 1.00 mm	Length in mm	Height in mm	Weight in kg
23015201	23015301	Channel width 150	1000	30	1,7
23015202	23015302	Channel width 150	2000	30	3,4
23015203	23015303	Channel width 150	1000	40	1,9
23015204	23015304	Channel width 150	2000	40	3,7
23015205	23015305	Channel width 150	1000	50	2,0
23015206	23015306	Channel width 150	2000	50	4,0
23015207	23015307	Channel width 150	1000	75	2,5
23015208	23015308	Channel width 150	2000	75	5,0
23015209	23015309	Channel width 150	1000	100	2,9
23015210	23015310	Channel width 150	2000	100	5,8



### BG-FLEX FA facade channel, width 150 – closed

Closed channel body made of galvanized or stainless steel

Item no. galvanised	Item no. stainless steel	Channel type <b>closed</b> Material thickness: 1.00 mm	Length in mm	Height in mm	Weight in kg
23015221	23015321	Channel width 150	1000	30	1,7
23015222	23015322	Channel width 150	2000	30	3,3
23015223	23015323	Channel width 150	1000	40	1,8
23015224	23015324	Channel width 150	2000	40	3,6
23015225	23015325	Channel width 150	1000	50	2,0
23015226	23015326	Channel width 150	2000	50	4,0
23015227	23015327	Channel width 150	1000	75	2,4
23015228	23015328	Channel width 150	2000	75	4,8
23015231	23015331	Channel width 150	1000	100	3,5
23015232	23015332	Channel width 150	2000	100	7,0

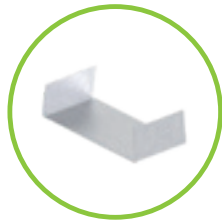
**i** Further heights on request

**i** For a wider array of accessories, incl. more images = page 16 - 17

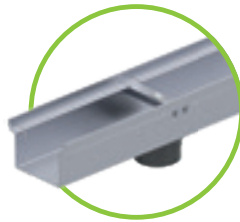
## Accessories

for BG-FLEX FA Channel width 150

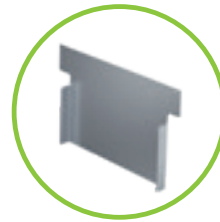
Item no. galvanised	Item no. Stainless steel	Accessories	Height in mm	Weight in kg
23015251	23015351	Outlet unit DN 100, width 150, length = 1000 mm	30	1,8
23015252	23015352	Outlet unit DN 100, width 150, length = 1000 mm	40	1,9
23015253	23015353	Outlet unit DN 100, width 150, length = 1000 mm	50	2,0
23015254	23015354	Outlet unit DN 100, width 150, length = 1000 mm	75	2,5
23015255	23015355	Outlet unit DN 100, width 150, length = 1000 mm	100	2,9
23915221	23915321	Front cap, width 150	50, 75, 100	0,1
23915222	23915322	Front cap, width 150	50	0,1
23915231	23915331	FA connection sleeve for channels with CH 50, 75, 100	28	0,1
24909012	24909013	FA flat head bolts for fastening mesh, slotted and longitudinal bar gratings (requirement per m: 2 pcs.)		0,1
24900024	24900025	FA bolting-material set for mesh and longitudinal bar gratings: Locking bar incl. press nut and flat head screw for CH 40/50 (requirement per m: 2 pcs.)		0,1



FA connection sleeve



FA outlet unit  
with outlet pipe



FA front caps




FA locking bar and pan  
head screw

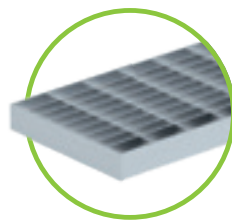
## Gratings

for BG-FLEX FA Channel width 150

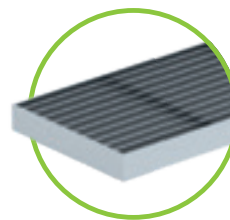
Item no. galvanised	Item no. stainless steel	Gratings	Dimensions in mm	Slot/mesh width in mm	Pcs./Pallet	Weight in kg pcs.	Inlet cross-section
23515201	23515301	1 Mesh grating	1000/150/20/2	MW 30/10	170	2,9	1227 cm <sup>2</sup> /m
23515202	23515302		500/150/20/2	MW 30/10	54	1,5	1227 cm <sup>2</sup> /m
23515203	24513307	2 Longitudinal bar grating	1000/150/20/2	Bar spacing 10 mm	170	4,6	1197 cm <sup>2</sup> /m
23515204	24513308		500/150/20/2	Bar spacing 10 mm	54	2,3	1197 cm <sup>2</sup> /m
-	23515305	3 Design-longitudinal bar grating	1000/122/20	Bar spacing 6 mm	80	3,6	796 cm <sup>2</sup> /m
-	23515306		500/122/20	Bar spacing 6 mm	54	1,7	796 cm <sup>2</sup> /m



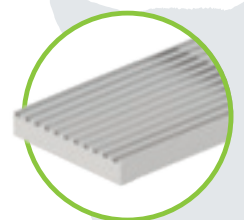
All FA facade channels incl.  
gratings are walkable and  
wheelchair-accessible! 



1 Mesh grating MW 30/10  
galvanised or V2A stainless steel



2 Longitudinal bar grating,  
bar distance 10  
galvanised or V2A  
stainless steel

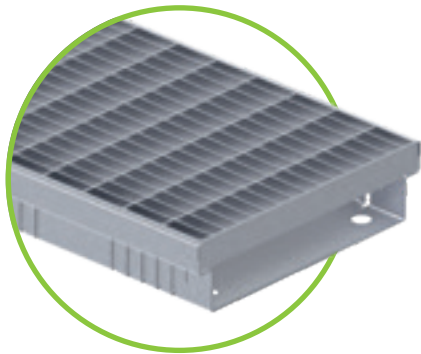


3 Design-longitudinal  
bar grating  
V2A stainless steel



# BG-FLEX FA

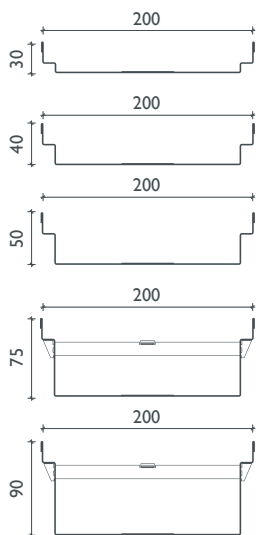
## Facade channel



### BG-FLEX FA facade channel, width 200 – perforated on both sides

Closed channel body made of galvanized or stainless steel

Item no. galvanized	Item no. stainless steel	Channel type <b>perforated</b> Material thickness: 1.00 mm	Length in mm	Height in mm	Weight in kg
23020201	23020301	Channel width 200	1000	30	2,3
23020202	23020302	Channel width 200	2000	30	4,5
23020203	23020303	Channel width 200	1000	40	2,4
23020204	23020304	Channel width 200	2000	40	4,8
23020205	23020305	Channel width 200	1000	50	2,6
23020206	23020306	Channel width 200	2000	50	5,2
23020207	23020307	Channel width 200	1000	75	3,0
23020208	23020308	Channel width 200	2000	75	6,0
23020209	23020309	Channel width 200	1000	90	3,3
23020210	23020310	Channel width 200	2000	90	6,5



### BG-FLEX FA facade channel, width 200 – closed

Closed channel body made of galvanized or stainless steel

Item no. galvanized	Item no. stainless steel	Channel type <b>closed</b> Material thickness: 1.00 mm	Length in mm	Height in mm	Weight in kg
23020221	23020321	Channel width 200	1000	30	2,3
23020222	23020322	Channel width 200	2000	30	4,5
23020223	23020323	Channel width 200	1000	40	2,4
23020224	23020324	Channel width 200	2000	40	4,8
23020225	23020325	Channel width 200	1000	50	2,6
23020226	23020326	Channel width 200	2000	50	5,2
23020227	23020327	Channel width 200	1000	75	3,0
23020228	23020328	Channel width 200	2000	75	6,0
23020229	23020329	Channel width 200	1000	90	3,3
23020230	23020330	Channel width 200	2000	90	6,5

## Accessories

für BG-FLEX FA facade channel, width 200

Item no. galvanized	Item no. stainless steel	Accessories	Height in mm	Weight in kg
23020251	23020351	Outlet unit DN 200, width 100, length = 1000 mm	30	2,1
23020252	23020352	Outlet unit DN 200, width 100, length = 1000 mm	40	2,3
23020253	23020353	Outlet unit DN 200, width 100, length = 1000 mm	50	2,5
23020254	23020354	Outlet unit DN 200, width 100, length = 1000 mm	75	3,0
23020255	23020355	Outlet unit DN 200, width 100, length = 1000 mm	90	3,2
23920221	23920321	FA front cap V, width 200	30, 40	0,1
23920222	23920322	FA front cap V, width 200	50	0,1
23920223	23920323	FA front cap V, width 200	75	0,1
23920224	23920323	FA front cap V, width 200	90	0,1
23920231	23920331	FA connection sleeve for channels with CH 50, 75, 90		0,1
24909012	24909013	FA flat head screw for fastening mesh, slotted and longitudinal bar gratings (requirement per m: 2 pcs.)		0,1
24900012	24900013	FA bolting-material set for mesh and longitudinal bar gratings: locking bar incl. press nut and pan head screw for CH 40/50 (required per m: 2 pcs.)		0,1

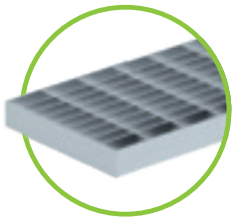
**i** Other construction heights on request

**i** For a wider array of accessories, incl. more images = page 16 - 17

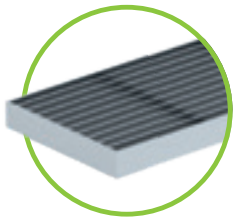
# Gratings

für BG-FLEX FA facade channel, width 200

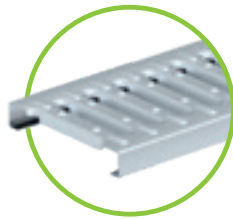
Item no. galvanised	Item no. stainless steel	Gratings	Dimensions in mm	Slot/mesh width in mm	Pcs./Pallet	Weight in kg pcs.	Inlet cross-section
24520201	24520301	1 Mesh grating	1000/200/20	MW 30/10	60	3,8	1615 cm <sup>2</sup> /m
24520202	24520302		500/200/20	MW 30/10	30	2,0	1615 cm <sup>2</sup> /m
23520203		2 Mesh grating	1000/200/20	MW 30/10 T-frame	60	4,5	1320 cm <sup>2</sup> /m
24520203	24520303	3 Longitudinal bar grating	1000/200/20	Bar distance 10 mm	60	6,4	1575 cm <sup>2</sup> /m
24520204	24520304		500/200/20	Bar distance 10 mm	30	3,2	1575 cm <sup>2</sup> /m
23520201	24520301	4 Slotted grating	1000/200/20	Bar distance 10 mm	60	0,3	1345 cm <sup>2</sup> /m
24520207	24520307	5 Perforated grating	1000/200/20	Ø 6 mm	60	3,5	250 cm <sup>2</sup> /m
24520208	24520308		500/200/20	Ø 6 mm	30	1,7	250 cm <sup>2</sup> /m
	23520305	6 Design-longitudinal bar grating	1000/200/20	Bar distance 6 mm	78	4,3	1110 cm <sup>2</sup> /m
	23520306		500/200/20	Bar distance 6 mm	42	2,2	1110 cm <sup>2</sup> /m



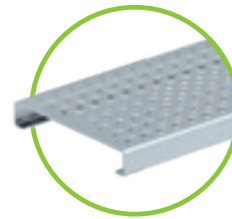
1 Mesh grating MW 30/10 galvanised or V2A stainless steel



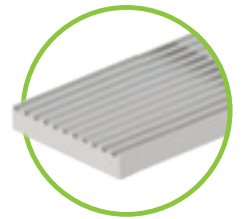
3 Longitudinal bar grating, bar distance 10 galvanised or V2A stainless steel





4 Slotted grating SW 9/85 galvanised or V2A stainless steel

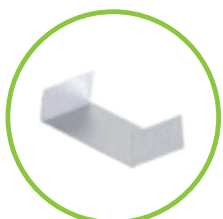


5 Perforated grating Ø 6 mm galvanised or V2A stainless steel



6 Design-longitudinal bar grating V2A stainless steel

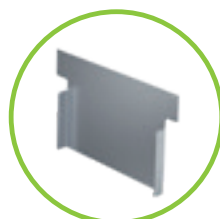
**i** All FA facade channels incl. gratings are walkable and wheelchair-accessible!  



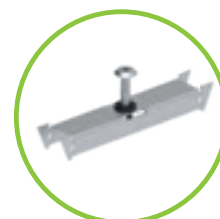
FA connection sleeve



FA outlet unit with outlet pipe



FA front caps

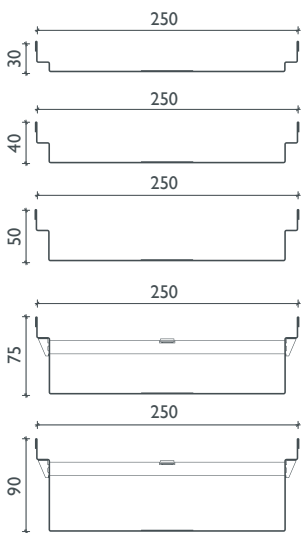
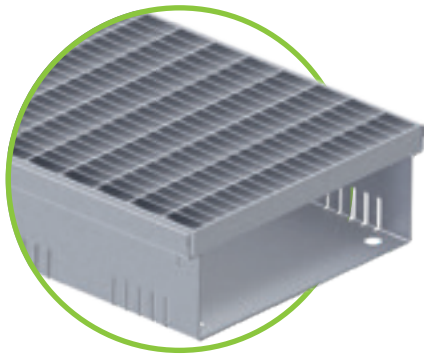


FA locking bar and pan head screw



# BG-FLEX<sup>FA</sup>

## Facade channel



### BG-FLEX FA facade channel, width 25 – perforated on both sides

Closed channel body made of galvanized or stainless steel

Item no. <b>galvanized</b>	Item no. <b>stainless steel</b>	Channel type <b>perforated</b> Material thickness: 1.00 mm	Length in mm	Height in mm	Weight in kg
23025201	23025301	Channel width 250	1000	30	2,7
23025202	23025302	Channel width 250	2000	30	5,3
23025203	23025303	Channel width 250	1000	40	2,8
23025204	23025304	Channel width 250	2000	40	5,6
23025205	23025305	Channel width 250	1000	50	3,0
23025206	23025306	Channel width 250	2000	50	6,0
23025207	23025307	Channel width 250	1000	75	3,4
23025208	23025308	Channel width 250	2000	75	6,8
23025209	23025309	Channel width 250	1000	90	3,7
23025210	23025310	Channel width 250	2000	90	7,3

### BG-FLEX FA facade channel, width 250– closed

Closed channel body made of galvanized or stainless steel

Item no. <b>galvanized</b>	Item no. <b>stainless steel</b>	Channel type <b>closed</b> Material thickness: 1.00 mm	Length in mm	Height in mm	Weight in kg
23025221	23025321	Channel width 250	1000	30	2,7
23025222	23025322	Channel width 250	2000	30	5,3
23025223	23025323	Channel width 250	1000	40	2,8
23025224	23025324	Channel width 250	2000	40	5,6
23025225	23025325	Channel width 250	1000	50	3,0
23025226	23025326	Channel width 250	2000	50	6,0
23025227	23025327	Channel width 250	1000	75	3,4
23025228	23025328	Channel width 250	2000	75	6,8
23025229	23025329	Channel width 250	1000	90	3,7
23025230	23025330	Channel width 250	2000	90	7,3

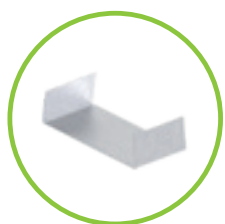
**i** Further heights on request

**i** For a wider array of accessories, incl. more images = page 16 - 17

## Accessories

for BG-FLEX FA facade channel, width 250

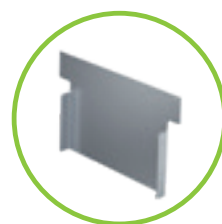
Item no. galvanised	Item no. Stainless steel	Accessories	Height in mm	Weight in kg
23025251	23025351	Outlet unit DN 100, width 250, length = 1000 mm	30	2,5
23025252	23025352	Outlet unit DN 100, width 250, length = 1000 mm	40	2,7
23025253	23025353	Outlet unit DN 100, width 250, length = 1000 mm	50	2,8
23025254	23025354	Outlet unit DN 100, width 250, length = 1000 mm	75	3,4
23025255	23025355	Outlet unit DN 100, width 250, length = 1000 mm	90	3,6
23925221	23925321	FA front cap V, width 250	30, 40	0,1
23925222	23925322	FA front cap V, width 250	50, 75, 90	0,1
23925231	23925331	FA connection sleeve for channels with CH 50, 75, 90		0,1
24909012	24909013	FA flat head bolts for fastening mesh, slotted and longitudinal bar gratings (requirement per m: 2 pcs.)		0,1
24900026	24900027	FA bolting-material set for mesh and longitudinal bar gratings: locking bar incl. press nut and pan head screw for CH 40/50 (required per m: 2 pcs.)		0,1



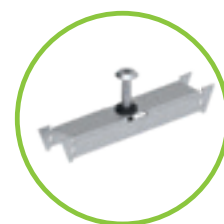
FA connection sleeve



FA outlet unit with outlet pipe



FA front caps



FA locking bar and pan head screw

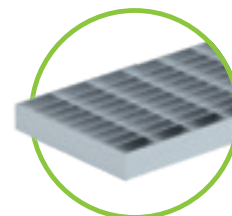
## Gratings

for BG-FLEX FA facade channel, width 250

Item no. galvanised	Item no. stainless steel	Gratings	Dimensions in mm	Slot/mesh width in mm	Pcs./Pallet	Weight in kg pcs.	Inlet cross-section
24525201	23525303	1 Mesh grating	1000/250/20	MW 30/10	60	4,5	1880



All FA facade channels incl. gratings are walkable and wheelchair-accessible!



1 Mesh grating MW 30/10  
Stainless steel

# BG-FLEX FA

## Facade channel



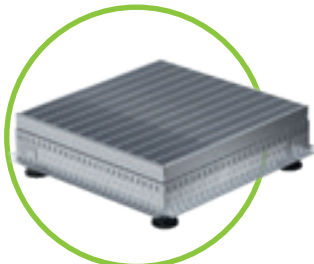
FA adjustable foot M 10 X 30, galvanised

### BG-FLEX FA facade channels height-adjustable

Item no. galvanised	Item no. stainless steel	Height-adjustable	Height in mm	Weight in kg
24900201	24900301	Additional charge for height adjustment press nuts per 1 m section	–	0,1
24900202	24900302	Additional charge for height adjustment press nuts per 2 m section	–	0,1
24900203	24900303	FA adjustable foot M 10 X 30	30	0,1
24900204	24900304	FA adjustable foot M 10 X 40	40	0,1
24900205	24900305	FA adjustable foot M 10 X 50	50	0,1
24900208	24900308	FA adjustable foot M 10 X 80	80	0,1

**i** All BG-FLEX FA facade channels can be optionally retrofitted with press nuts and adjustable feet to make them height-adjustable.

**i** Please be aware that for height-adjustable facade channels, 4 adjustable feet are required for each 1 meter channel and 6 adjustable feet are required for each 2 meter channel at the corresponding height.

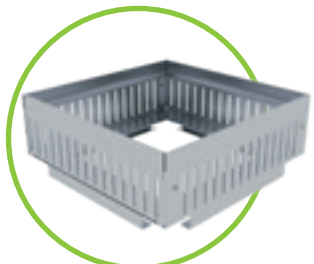


FA gully top with mesh grating

### BG-FLEX FA facade channels – gully tops

Suitable as sump or maintenance unit with inserted mesh gratings

Item no. galvanised	Item no. stainless steel	Gully tops	Height in mm	Weight in kg
23900206	–	FA gully top V 150/150, fixed construction height	60	0,5
23900207	–	FA gully top V 150/150, fixed construction height	100	0,7
23900208	–	FA gully top V 150/150, fixed construction height	150	0,8
23900212	–	Distance frame for height adjustment 150/150, fixed construction height	20	0,2
23900214	–	Distance frame for height adjustment 150/150, fixed construction height	50	0,3
23900201	–	FA gully top V 200/200, fixed construction height	60	0,6
23900202	–	FA gully top V 200/200, fixed construction height	100	0,9
23900203	–	FA gully top V 200/200, fixed construction height	150	1,2
23900205	–	Distance frame for height adjustment 200/200, fixed construction height	20	0,3
23900215	–	Distance frame for height adjustment 200/200, fixed construction height	50	0,5
24925200	24925300	FA gully top V 250/250, fixed construction height	50	1,9
24925201	24925301	FA gully top V 250/250, variable construction height	70 – 100	2,6
24925202	24925302	FA gully top V 250/250, variable construction height	100 – 160	2,9
2494020	24940300	FA gully top E 400/400, fixed construction height	50	2,4
24940201	24940301	FA gully top E 400/400, variable construction height	70 – 100	3,3
24940202	24940302	FA gully top E 400/400, variable construction height	100 – 160	4,1
24925210	24925310	FA add-on frame E 250/250, fixed construction height	80	1,5
24940210	24940310	FA add-on frame E 400/400, fixed construction height	80	3,3



FA add-on frame for gully top

### Gratings

for BG-FLEX FA gully tops

Item no. galvanised	Item no. stainless steel	Gratings	Dimensions in mm	Slot/mesh width in mm	Weight in kg
23500203	–	Mesh grating	148/148/20	MW 30/10	0,9
23500201	–	Mesh grating	198/198/20	MW 30/10	1,2
24525200	24525300	Mesh grating	240/240/20	MW 30/10	1,3
24540200	24540300	Mesh grating	392/392/20	MW 30/10	2,6



## BG-FLEX FA facade channels – branch channels for all channel widths

to connect channels and outlet

Item no. galvanised	Item no. stainless steel	Branch channels	Length in mm	Height in mm	Weight in kg
37851	37861	Branch channel, 1000/90/30	1000	30	1,1
37852	37862	Branch channel, 2000/90/30	2000	30	2,2

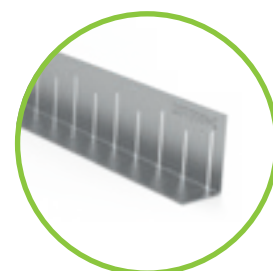


FA branch channels

## BG-FLEX FA facade channels – gravel stops for all channel widths

to separate grit beds and channel bodies

Item no.	gravel stop - perforated	Length in mm	Material	Weight in kg
23900911	FA gravel stop 60 x 40 mm, 2 mm thickness	2000	aluminium	0,9
24900702	FA gravel stop 80 x 50 mm, 2 mm thickness	2000	aluminium	1,3
23900922	FA gravel stop 80 x 80 mm, 2 mm thickness	2000	aluminium	1,5
23900912	FA gravel stop 100 x 80 mm, 2 mm thickness	2000	aluminium	1,7
23900916	FA gravel stop 100 x 80 mm, with additional fold, 1,5 mm thick	2000	aluminium	1,5
23900924	FA gravel stop 150 x 100 mm, 2 mm thickness	2000	aluminium	2,3



FA gravel stop

## BG-FLEX FA terrace point drainage

Height-adjustable point drainage unit for roof terraces and balconies

Item no.	Terrace point drainage units	Length in mm	Material	Weight in kg
23910701	Terrace point drainage incl. slotted grating	200	aluminium	1,3
23910702	Terrace point drainage incl. slotted grating for inlet, DM 70	200	aluminium	1,3
23910703	Terrace point drainage incl. slotted grating for inlet, DM 100	200	aluminium	1,3
23910706	Outlet, flat, outlet DN 100	200	galvanised and blasted	0,5



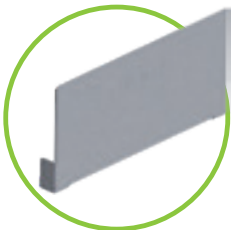
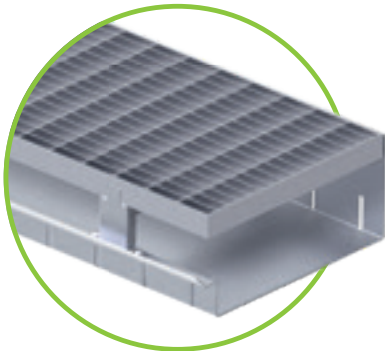
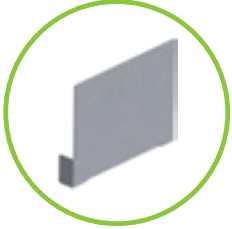
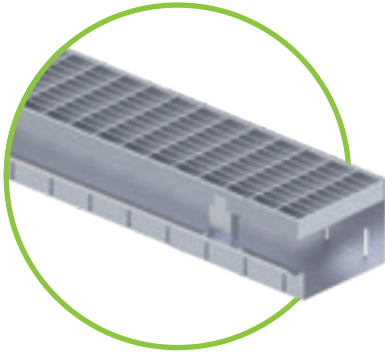
Terrace point drainage

# References





# BG-FLEX glass Facade channel



## BG-FLEX glass facade channel, width 130

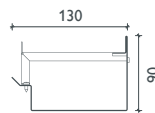
Channel body made of galvanised steel or stainless steel, incl. support bracket and butt connector

Item no. galvanised	Item no. stainless steel	Channel type <b>perforated</b> Material thickness: 1.00 mm	Length in mm	Height in mm	Weight in kg
21013271	21013371	Channel width 130	2000	90	4,9

### Accessories

BG-Flex glass facade channels, RB 130

Item no. galvanised	Item no. stainless steel	Accessories	Length in mm	Height in mm	Weight in kg
24913225	24913325	Front cap glass, width 130		90	0,1



## BG-FLEX glass facade channel, width 200

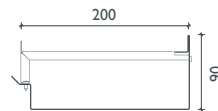
Channel body made of galvanised steel or stainless steel, incl. support bracket and butt connector

Item no. galvanised	Item no. stainless steel	Channel type <b>perforated</b> Material thickness: 1.00 mm	Length in mm	Height in mm	Weight in kg
21020271	21020371	Channel width 200	2000	90	6,2

### Accessories

BG-Flex glass facade channels, RB 200

Item no. galvanised	Item no. stainless steel	Accessories	Length in mm	Height in mm	Weight in kg
24920225	24920325	Front cap glass, width 200		90	0,1



Delivery time on request.



# References





# BG-FLEX base plinth channel



## BG-FLEX base plinth channel, width 250

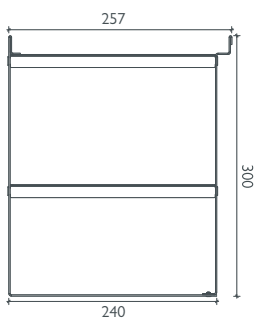
Channel body made of galvanised or stainless steel

Item no. galvanised	Item no. stainless steel	perforated channel body Material thickness 1.5 mm	Length in mm	Height in mm	Weight in kg
21025230	21025330	Plinth channel	1000	300	10,5

## Gratings

for BG-FLEX base plinth channels

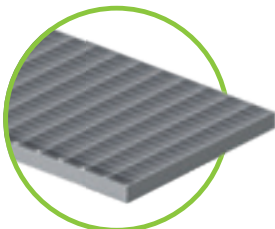
Item no. galvanised	Item no. stainless steel	Gratings	Dimensions in mm	Slot/mesh width in mm	Weight in kg
24525201	23525303	Mesh grating	1000/250/20	MW 30/10	5,5



## Accessories

for BG-FLEX base plinth channels

Item no. galvanised	Item no. stainless steel	Gratings	Height in mm	Weight in kg
24925226	24925326	Base front cap, left	300	0,5
24925227	24925327	Base front cap, right	300	0,5



Mesh grating MW 30/10



base front cap, left



base front cap, right

### Areas of application:

- Timber frame and/or post and beam construction and solid wood construction in areas with ground contact
- For preserving the base area of the timber construction
- To create barrier-free transitions in compliance with DIN 68800-2 "Wood preservation - Preventive constructional measures in buildings"
- To minimise water spray on timber and ETICS facades
- For back-ventilated wooden facades

### Your benefits at a glance:

- Sturdy channel bodies made of galvanised steel sheeting and/or stainless steel
- Barrier-free transitions in compliance with DIN 68800-2
- Wood and/or facade preservation
- Large ventilation area
- Easy installation

# Leaves **wooden** houses looking **young** and not old for ages.

Timber frame homes have been on trend for years. But, as beautiful they look, they're also sensitive to wet conditions in particular. With its innovative design, the BG-FLEX base plinth channel ensures that the wooden frame construction stays dry and the wooden facades stay intact for a long time to come.

## Doubling down on innovation to combat the wet ...

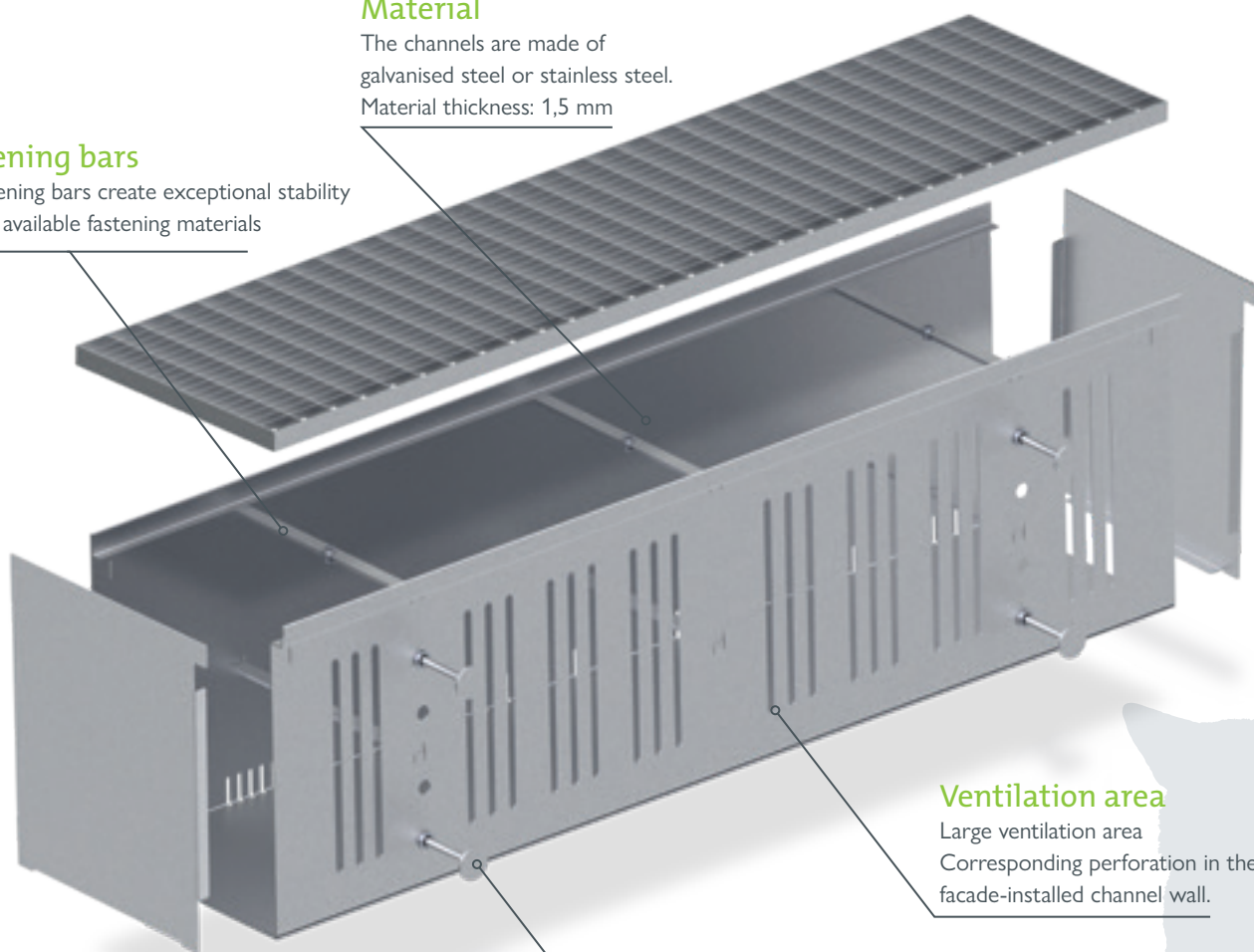
The BG-FLEX base has been designed to reduce the water-bearing level and thus keep the timber frame construction lastingly dry whilst preventing water from seeping into the building's waterproofing. A ventilation section integrated into the channel body provides for efficient air circulation. This ensures that moisture in the base area can dry out quickly and the wooden facades are protected against premature weathering. Spacers additionally offer greater location flexibility and serve as braces for the channel bodies over the base area. What's more, the BG-FLEX base is barrier-free, durable and easy to install – and, needless to say, available as standard.

### Material

The channels are made of galvanised steel or stainless steel.  
Material thickness: 1,5 mm

### Strengthening bars

- 6 strengthening bars create exceptional stability
- Optionally available fastening materials



### Ventilation area

Large ventilation area  
Corresponding perforation in the facade-installed channel wall.

### Spacers

Adjustable spacers as supports for the channel bodies and to enhance the location options.

# Barely visible, but visibly effective.

Sometimes you need to look twice to see true performance. This is true of our terrace slot channels, with their slot width of a mere 18 mm. They blend in perfectly with the overall appearance of the structure without compromising the drainage performance.

## Terrace slot channels: Drainage on two levels.

Terrace slot channels are excellent for draining terraces, roof terraces and gardens. Their key advantage is that they allow drainage to occur on two levels: the flooring and the underlying floor plates.



### Slot width 18 mm

The narrow slot width of just 18 mm makes these drainage options virtually invisible.

### Height-adjustable

Through the height adjustment, the level and slope differences between the walkway surface and base plate can be perfectly balanced.

### Two-sided perforation

Drainage possible on two water-bearing levels.

### Front sides

The front sides are perfectly coordinated to establish a secure connection between the individual segments.



### Construction time barrier

The construction time barrier should remain in the terrace slot channels during the entire construction period as this prevents the system from deforming or becoming soiled.




### Slot inlay

A grating cover prevents solids from entering and ensures that the channel run remains clear and clean. The cover can easily be removed to clean the channel body.

### Material

The channels are made of V2A stainless steel.

### The benefits at a glance:

- Extremely stable and lightweight channel bodies made of V2A stainless steel
- Slot width of 18 mm with high drainage performance
- Blends in well with the overall architectural aesthetics thanks to great flexibility and an extremely slim design
- Many versions and a range of accessories available
- Easy-to-clean channel body with removable cover and maintenance units
- Walkable/wheelchair-accessible, heel-proof 





# BG-FLEX<sup>TE</sup>

## Terrace slot channel



### BG-FLEX TE terrace slot channel, SW 18 – perforated on both sides

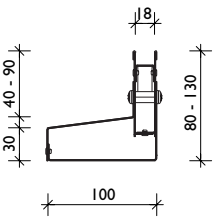
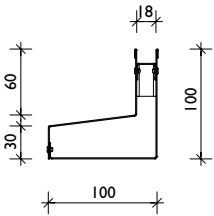
Stainless steel channel body

Item no. stainless steel	Channel type <b>perforated</b> Material thickness: 1.00 mm	Length in mm	Height in mm	Weight in kg
38020	SW 18, perforated	1000	100	3,0
38030	SW 18, perforated	1000	80 – 130	3,7

### BG-FLEX TE terrace slot channel, SW 18 – closed

Stainless steel channel body

Item no. stainless steel	Channel type <b>closed</b> Material thickness: 1.00 mm	Length in mm	Height in mm	Weight in kg
38000	SW 18, unperforated	1000	100	3,0
38010	SW 18, unperforated	1000	80 – 130	3,7



Variable construction height

## Gratings

BG-FLEX TE terrace slot channel, SW 18

Item no. stainless steel	Grating	Weight in kg
37955	TE slot inlay with square perforation 8/8 mm, L = 500 mm	0,1
37956	TE slot inlay with square perforation 8/8 mm, L = 1000 mm	0,2
37961	TE construction time barrier SW 18, L = 1000 mm, <b>made of wood</b>	0,1



TE slot inlay with square perforation 8/8 mm



TE construction time barrier made of wood, L = 1000 mm



All TE terrace slot channels, incl. covers, are walkable and wheelchair-accessible!

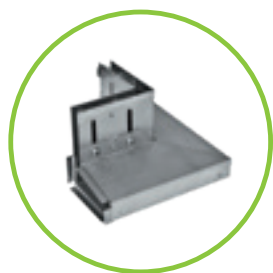




## Accessories

for BG-FLEX TE terrace slot channel, SW 18

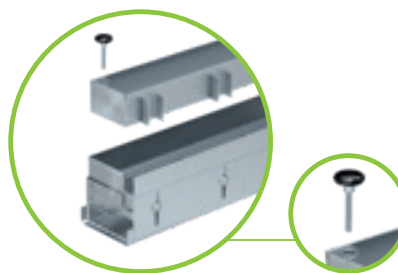
Item no.	Accessories	Height in mm	Weight in kg
13399	TE opening tool for maintenance unit-cover – 2 pcs. required		0,1
38040	TE maintenance unit 500/100 with outlet at bottom or side	80 – 130	3,0
38050	TE external corner 200/200 – unperforated	80 – 130	1,2
38055	TE internal corner 200/200 – unperforated	80 – 130	1,4
38060	TE front cap left/right, width 100 mm	80 – 130	0,1



TE external corner 200/200  
– unperforated



TE internal corner  
200/200 – unperforated



TE maintenance unit  
500/100 with outlet:  
bottom DN 75 / at the side DN 50



TE front cap left/right,  
width 100 mm

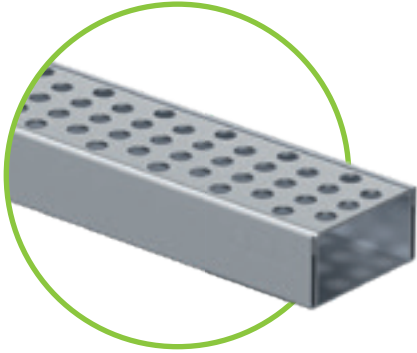
## References





# BG-FLEX™

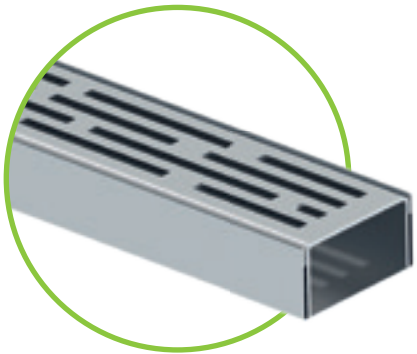
## terrace channel



### BG-FLEX™, RB 60 – STAINLESS STEEL

for paving drainage on terraces and balconies

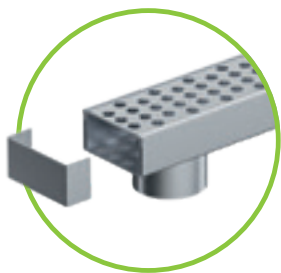
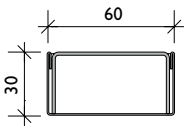
Item no. stainless steel	channels	Length in mm	Height in mm	Weight in kg
21106301	Channel element	1000	30	2,1
Outlet unit – material thickness: 1.50 mm				
21106302	Outlet unit, outlet DN 50	1000	30	2,1
21106311	SET, corner section	1000x1000	30	4,1



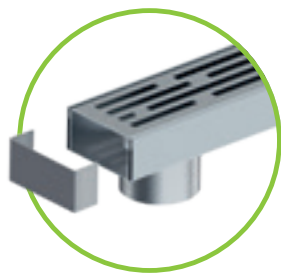
### BG-FLEX™, RB 60, LINEAR – STAINLESS STEEL

for paving drainage on terraces and balconies

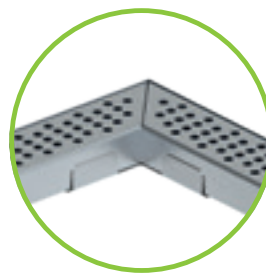
Item no. stainless steel	LINEAR channel	Length in mm	Height in mm	Weight in kg
Channel element – material thickness: 0.75 mm				
21106305	Channel element	1000	30	2,0
Outlet unit – material thickness: 1.50 mm				
21106306	Outlet unit, outlet DN 50	1000	30	2,1
21106312	SET, corner section	1000x1000	30	4,0



Outlet section incl.  
front cap/push-on cover,  
bottom outlet DN 50



Outlet section LINEAR incl.  
front cap/push-on cover,  
bottom outlet DN 50

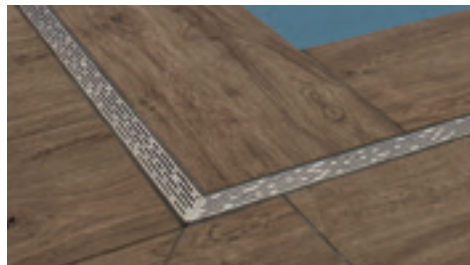


SET, corner section



SET, corner section  
LINEAR

# References



# Easy to install elegant design.

## Aesthetic and functional.

The TM terrace channel's narrow width of just 60 mm gives it an inconspicuous elegance that makes it ideal for installation on terraces and garden areas. They can be laid simultaneously with the terrace plates. No special substructure is required.

## Fields of application

Ideal for laying on terraces in combination with flagstones. As it is quick and easy to install, this system is an excellent choice for both contractors and DIY enthusiasts.

## Channel cover

Made with a U-profile, the channel cover simply inserts into the channel body. Its brushed surface has appealingly looking Ø 6 mm perforations. The attached protective film guards against damage during installation.

## Subtle look

The channel width of 60 mm creates an elegant and understated look.

## Element height

The element's low height of 30 mm is excellently suited for laying in a terrace surface covering.

## Material

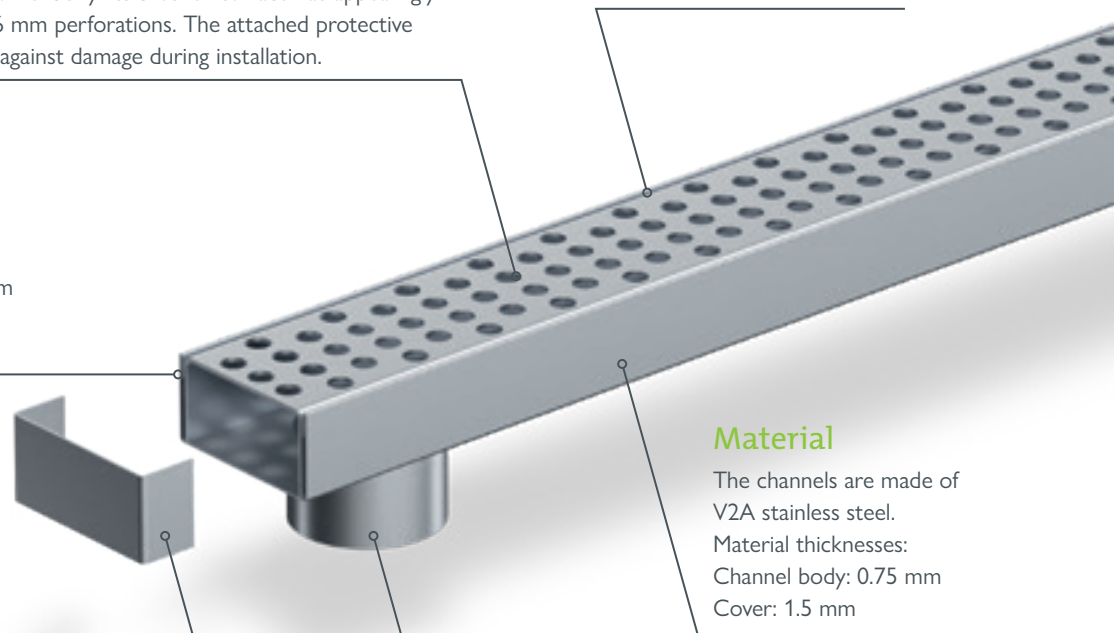
The channels are made of V2A stainless steel.  
Material thicknesses:  
Channel body: 0.75 mm  
Cover: 1.5 mm

## Face/transition plate

The U-shaped component can be used as a transition plate for a secure connection in the channel joint as well as an end cap for the channel run.

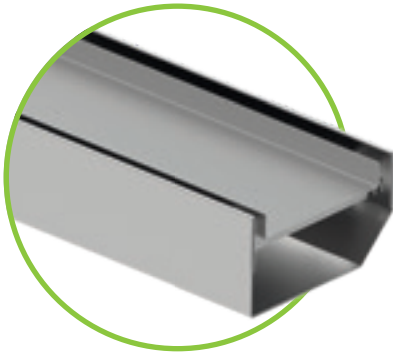
## Channel body with outlet

Channel bodies with a DN 50 bottom outlet are also available.

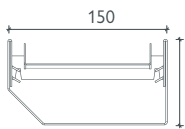




# BG-FLEX stone terrace channel



BG-FLEX stone made of stainless steel



## BG-FLEX stone, RB 150

Unperforated channel body made from 1.4301 stainless steel, incl. support bracket and stone basin; matching stone thickness 20 and 30 mm

Item no. stainless steel	Channel body	Length in mm	Height in mm	Weight in kg
Channel element – material thickness: 0.75 mm				
21115301	Stone, width 150, incl. crossbar and stone basin	1000	80	6,2
21115302	Stone, width 150, incl. crossbar and stone basin	2000	80	12
21115303	Stone outlet unit incl. crossbar and stone basin with DN 100 outlet	1000	80	6,2

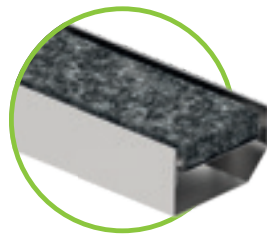
## Accessories

for BG-FLEX stone, RB 150

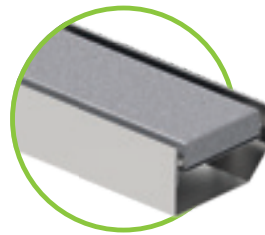
Item no. stainless steel	Accessories	Length in mm	Height in mm	Weight in kg
24915326	Coupling sleeve for stone, width 150	50	46	0,1
24915327	Front cap stone, width 150	15	80	0,1



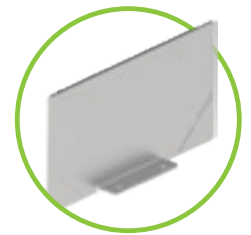
Delivery time on request.



BG-FLEX stone made of stainless steel  
Representative image: with granite, dark <sup>1)</sup>



BG-FLEX stone made of stainless steel  
Representative image: with granite, light <sup>1)</sup>



Front cap BG-FLEX stone

# References



# Unobtrusive drainage, durable material.

## If you want to preserve the beautiful stone...

... you need to go for this new development. Because BG-FLEX stone can create an unobtrusive drainage channel on flagstone patios without detracting from the overall aesthetic appearance. With two integrated inlet slots, this product delivers high hydraulic performance. Cleaning is a breeze thanks to the easy-to-remove stone basin.

## Fields of application

Ideal for laying on terraces in combination with tile coverings. Compatible with all standard 20 to 30 mm thick terrace paving and tiles.

### Granite, light (representative image)

A variety of stone slabs can be cut to match the installed channels and the already laid stone.

### Support bracket

Support bracket for stone basin; variable for 20 mm and 30 mm tile/slab thickness.

### Removable stone basin

Can be fitted with terrace tiling or paving on-site.

### Material

The channels are made of V2A stainless steel.  
Material thicknesses:  
Channel body: 1.5 mm  
Stone basin: 1.0 mm

# As **unique** as your requirements.

Our special solutions.

We know that some challenges cannot be solved with standard channel elements. Our technicians will therefore be happy to design special components or individual solutions for your requirements. With our know-how, we will produce what you need, and provide support on site.

## Send us your project!

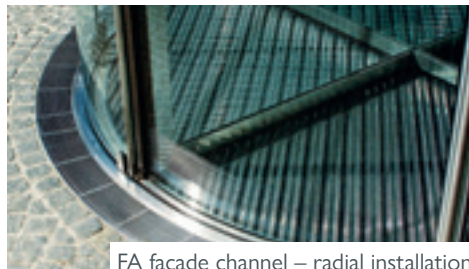
Our technical support will be happy to advise you and provide you with an overall quote for your project.



FA facade channel – adapted to the building



Slot tops for fountains / segment arches



FA facade channel – radial installation



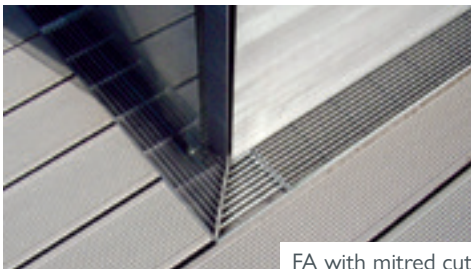
TE terrace slot channel – curved



# References



Slot top with drainage-slots for drainage of the second level



FA with mitred cut



FA with anti-slip mesh grating



FA with design longitudinal bar grating

# Understated yet remarkably efficient & resilient:

Indoor slot channel system BG-FLEX omega

The ability to withstand heavy loads without a cover and, at the same time, ensure reliable and long-lasting drainage performance, makes the BG-FLEX omega slotted channel a simple, economical solution for your indoor drainage.

Thanks to the "V"-shaped channel bottom, liquids can be drained off safely and efficiently. An integrated odour trap is included in outlet units as standard.

## Areas of application.

Food industry, industrial kitchens, slaughterhouses, wineries, breweries, etc.

up to class C 250

### Visible edge with shimming

- Made of PVC, adhered in the edge
- For cavity-free, high load capacity grouting in the concrete/in the coating

### Liquid-tight joints

- Bolted flange
- Seal made from EPDM (alternatively made from Teflon or silicone)
- Complete with stainless steel bolting M 8

### Corner piece

- Corner piece with leg length of 500 mm low cost and efficient corner solution
- Outstanding in traffic areas

### Outlet elements incl. odour trap

- Outlet unit with horizontal outlet or vertical outlet (see outlet element above)
- Various dimensions and heights for higher drainage capacity
- Removable silt bucket solid cover navigable up to B 125, Class C 250 on request



GRASPOINTNER  
Sustainable innovation.



### Channel body made from stainless steel

- optimised omega shape for high drainage performance, easy cleaning and high stability (inbuilt slot bridge)
- Stainless steel 1.4301 or higher quality upon request
- Material thickness: 2 mm
- Slot width of 16 mm, no cover required

### Connecting elements

- For corner, cross and T-connections
- also available with outlet

### Channel with outlet

- vertical/horizontal outlet directly from the channel element
- freely chosen position in the channel run

### Anchor plate

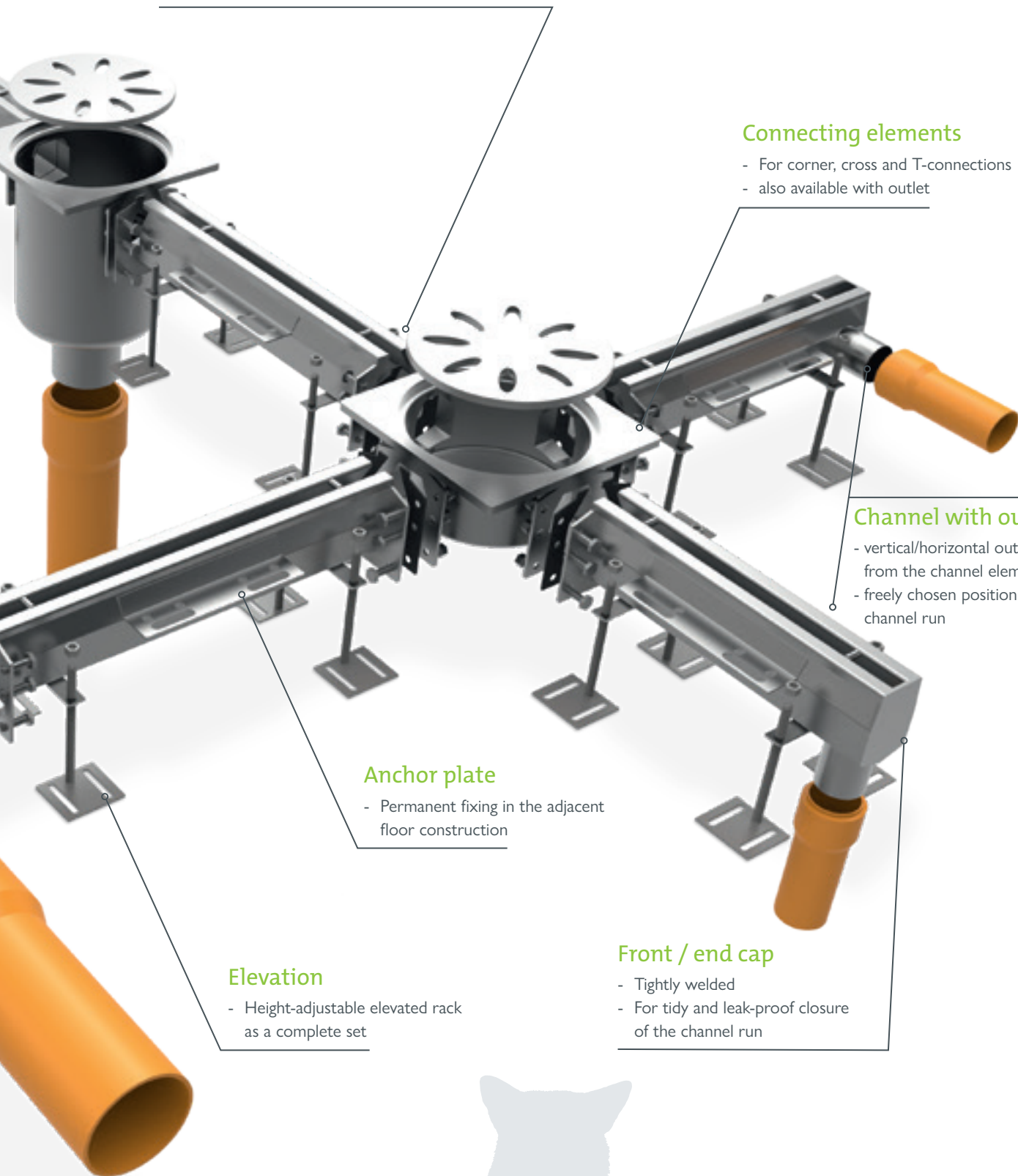
- Permanent fixing in the adjacent floor construction

### Elevation

- Height-adjustable elevated rack as a complete set

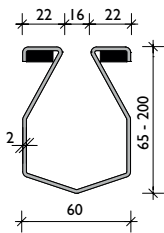
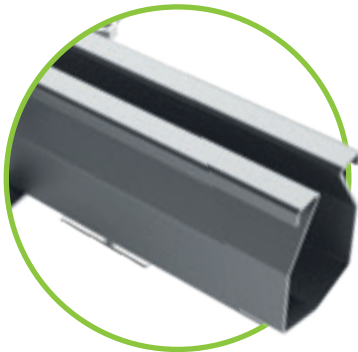
### Front / end cap

- Tightly welded
- For tidy and leak-proof closure of the channel run



up to load class C 250

# BG-FLEX omega indoor slot channel



## BG-FLEX omega, SW 16

Stainless steel channel elements with or without slope, with sealing flange for fastening

Material thickness: 2.0 mm	Length in mm	Height in mm	Weight in kg
Channels with two-sided flange, <b>no incline</b>			
Varying construction heights	to max. 3000	65 – 200	4,4 – 25,5
Channels with two-sided flange, <b>0.5% incline</b>			
Varying construction heights	to max. 3000	65 – 200	4,5 – 24,6



Flange connection with seal

## BG-FLEX sigma outlet element

for BG-FLEX omega slotted channels, incl. odour trap and silt bucket, in various sizes and heights, always for vertical or horizontal connections

Material thickness: 2.0 mm	Material	Height in mm	Weight in kg
Outlet elements <b>incl. odour trap and silt bucket</b>			
for vertical connection, 247x247 DN 100	Stainless steel	260	8,3
for horizontal connection, 247x247 DN 100	Stainless steel	260	8,3



Other outlet units for higher hydraulic capacity available upon request.



Omega outlet elements incl. odour trap and silt bucket, horizontal outlet



Omega outlet elements incl. odour trap and silt bucket, vertical outlet



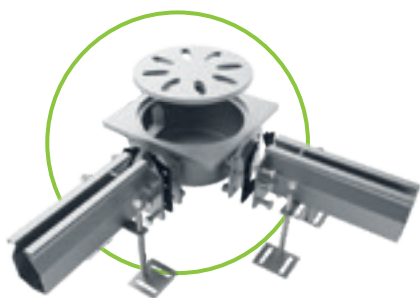
## Accessories

for BG-FLEX omega, SW 16

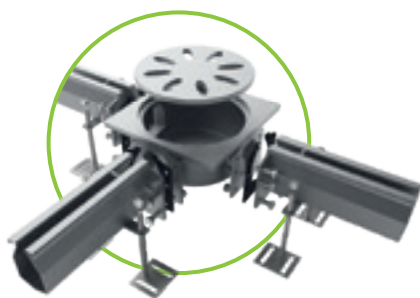
Accessories	Material	Height in mm	Weight in kg
Corner 90°, leg length 500 mm	Stainless steel	65 – 200	4,4 – 9,0
Corner connector 90°	Stainless steel	65 – 200	5,7 – 7,3
T-connector	Stainless steel	65 – 200	6,1 – 7,8
Cross connector	Stainless steel	65 – 200	6,5 – 8,3
Front / end cap	Stainless steel	65 – 200	0,3 – 2,7
End cap with outlet DN 50 mm	Stainless steel	65 – 200	0,4 – 2,8



Omega corner with leg length 500 mm



Omega corner connector



Omega T-connector



Omega cross connector

## References



# Coated concrete has a new best friend ...

## Drainage channel system BG-FLEX sigma tec

The BG-FLEX sigma tec lets nothing get through – especially when combined with coated concrete coverings. Especially designed for multi-storey and underground car parks, the drainage system is made of 1.4301 stainless steel, with higher-grade qualities available on request.

### Perfectly fitted and tightly-sealed for long-lasting building structure protection.

Floor coatings can be laid so they are completely snug with the channel system to lastingly protect the building structure. This is made possible by the channel-side flange that enables the completely snug and tightly-sealed fitting of floor coverings.

This lastingly prevents the reinforcements from corroding through dripping and melt water contaminated with de-icing salt. Depending on the nominal width, stainless steel or plastic gratings can be selected from the BG-FILCOTEN® product range up to load class C 250.

up to load class C 250

### Liquid-tight joints

- Bolted flange
- NBR seal
- complete with stainless steel bolting M 6

### front cap

- For a clean finish to the channel run
- Incl. surface strip
- With bolted seal

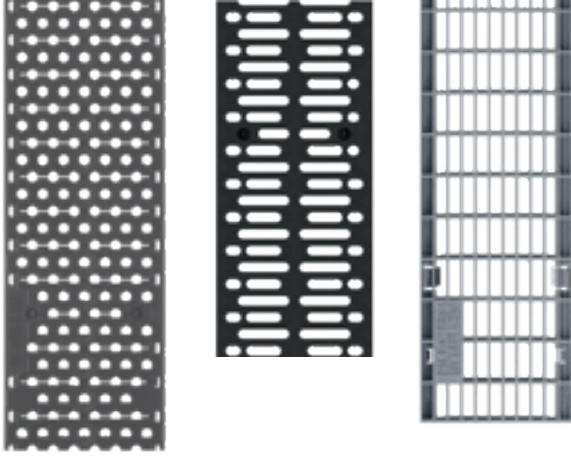
### Perforated coating slot

- Permanently connects the floor coating to the perforated slot connection plate

### Elevation

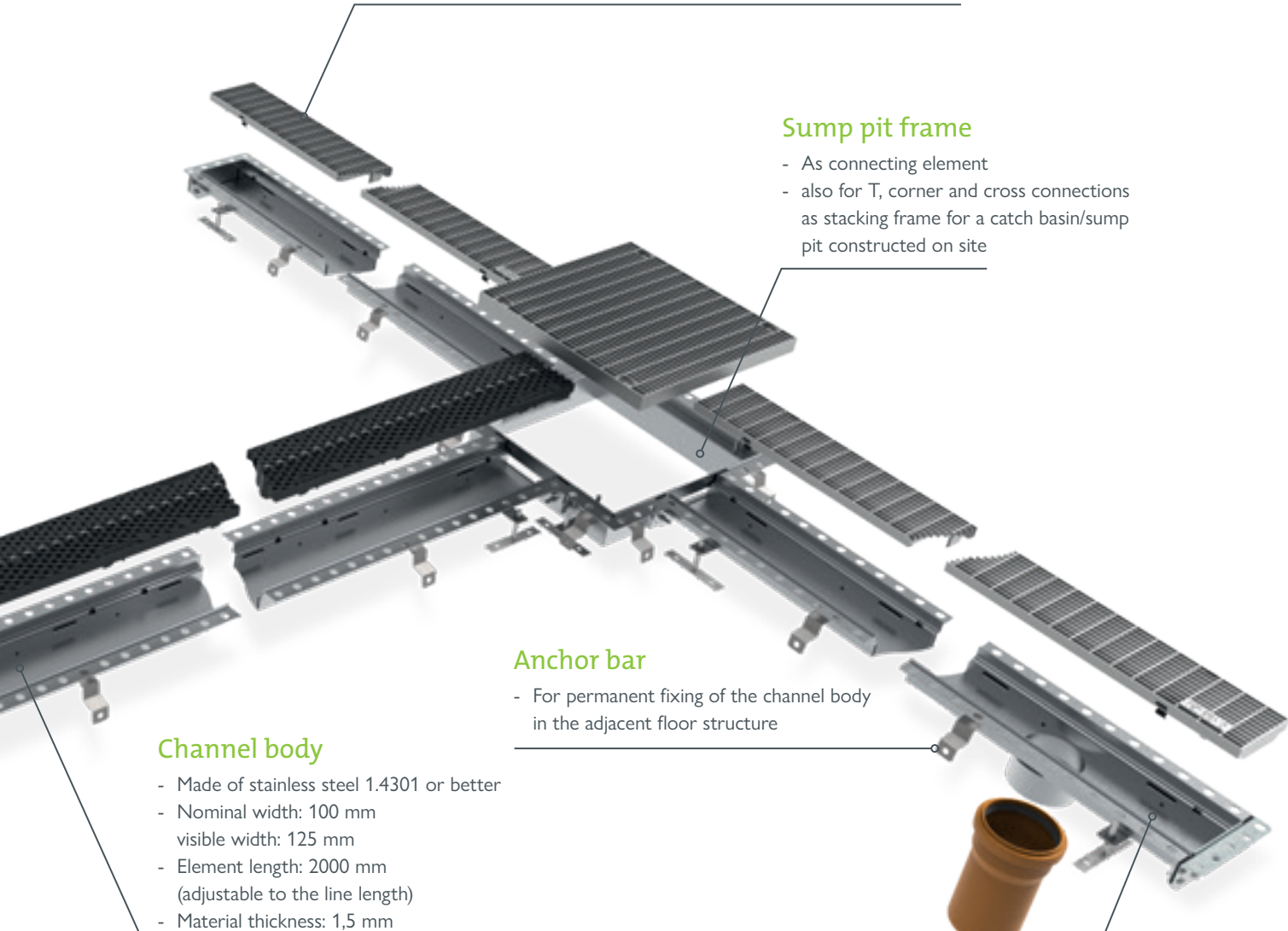
- Height-adjustable elevated rack as a complete set





### Gratings

- COMBee plastic designer grating, stainless steel mesh grating or plastic slotted grating
- Hole size 7 mm or MW 30/10
- Load class B 125 or C 250
- with fiX-locking
- bolting available at extra cost



### Sump pit frame

- As connecting element
- also for T, corner and cross connections as stacking frame for a catch basin/sump pit constructed on site

### Anchor bar

- For permanent fixing of the channel body in the adjacent floor structure

### Channel body

- Made of stainless steel 1.4301 or better
- Nominal width: 100 mm  
visible width: 125 mm
- Element length: 2000 mm  
(adjustable to the line length)
- Material thickness: 1,5 mm

### Outlet units

- Outlet pipe with a diameter of DN 100, for individual placement in the channel run
- Outlet as a feed line, e.g. to the oil separator or connector to the BG-FILCOTEN® spot p sump pit



up to load class C 250

# BG-FLEX sigma tec Drainage channel system

## BG-FLEX sigma tec, nominal width 100 – STAINLESS STEEL

Channel element, without incline, with welded-on sealing flange, incl. elevation, seal and bolted butt joint

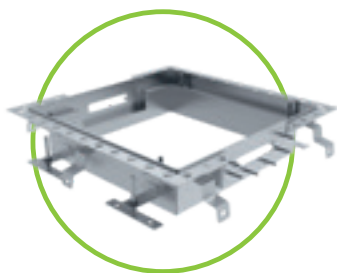
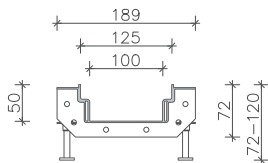
Item no.	Length in mm	External height in mm	Internal height in mm	Visible width in mm	Weight in kg
Flanged channels, no incline – material thickness: 1.5 mm					
20710351	2000	72	50	125	10,2
20710352	500	72	50	125	3,3
20710353	1000	72	50	125	5,6
20710354	1500	72	50	125	8,5
20710355	available on request	72	50	125	available on request

## BG-FLEX sigma tec outlet elements

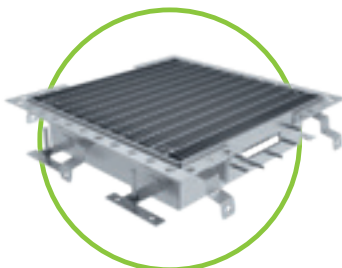
Sump pit frame, can be placed anywhere in the channel run, as a connecting, end, T or cross element

Item no.	Outlet elements	Material	Height in mm	Weight in kg
Outlet elements, material thickness 1.5 mm				
20710361	Channel element NW 100, L 500 mm, with outlet DN 100		72	3,8
20710362	Fitting piece NW 100, length available on request, incl. downwards outlet DN 100		72	10,8
sump pit frame made entirely of FILCOTEN® HPC				
14140000	Sump pit, spot-p		500	51,5
Sump pit frame, material thickness 1.5 mm				
20710371	End piece 400/400	Stainless steel	100	4,5
20710372	Straight connection piece	Stainless steel	100	4,0
20710373	Corner piece 90° 400/400	Stainless steel	100	4,0
20710374	T-piece 400/400	Stainless steel	100	4,5
20710375	Cross piece 400/400	Stainless steel	100	4,5
Sump pit frame grating				
20700301	Mesh grating 398/398/30, MW 30/10, class B 125		30	10,0
20700302	Mesh grating 398/398/30, MW 30/10, class C 250		30	11,8

Item no.	Accessories	Material	Weight in kg
20710317	Front cap NW 100, incl. seal and fasteners	Stainless steel	0,6
<b>Custom build</b>	Base outlet 150x150 mm material thickness: 3 mm, outlet nozzles DN 100, incl. mesh grating	Stainless steel	0,5



sigma tec  
Sump pit frame

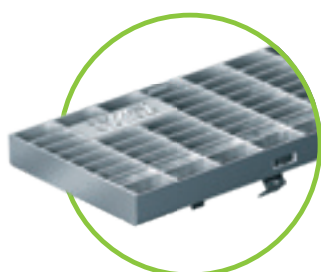


sigma tec  
Sump pit frame  
with mesh grating

## Gratings

for BG-FLEX sigma tec grid unit system, nominal width 100

Item no.	Gratings	Material	Dimensions in mm	Load class as per EN-standard	Slot/mesh width in mm	Weight in kg	Inlet cross-section
17010322	Mesh grating	Stainless steel	1000/122/20	C 250	MW 30/10	3,3	910 cm <sup>2</sup> /m
17010401	COMBee design grating	Plastic PA6	500/123/20	B 125	Ø 7.3 mm	0,9	290 cm <sup>2</sup> /m
17010402		Plastic PA6	500/123/20	C 250	Ø 7.3 mm	1,1	290 cm <sup>2</sup> /m
17010403	Plastic slotted grating	Plastic PA6	500/123/20	B 125	SW 8x40	0,9	420 cm <sup>2</sup> /m
17010404	Plastic slotted grating	Plastic PA6	500/123/20	C 250	SW 8/40	1,1	420 cm <sup>2</sup> /m



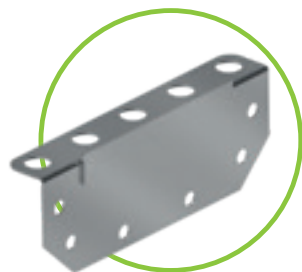
Mesh grating class C



COMBee design grating



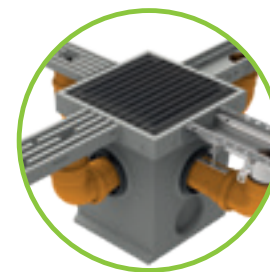
Plastic slotted grating



Front cap



Base outlet 150x150 mm



BG-FILCOTEN® spot-p



### Send us your project!

Our technical support will be happy to advise you and provide you with an overall quote for your project.

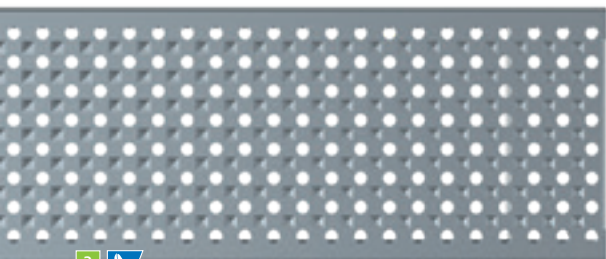
Robert Eder

Tel.: +43 6233/8900-0 / sales.int@bg-graspointner.com

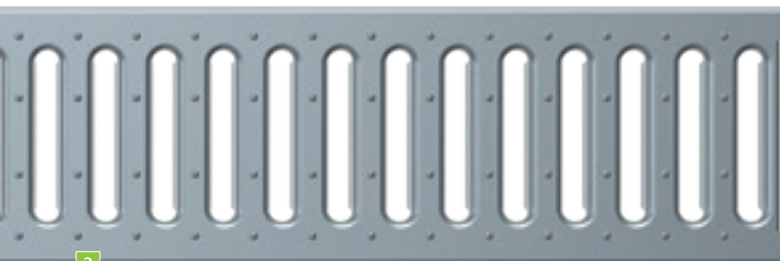


**i** Please note that these products are manufactured to order – they are not stock products!

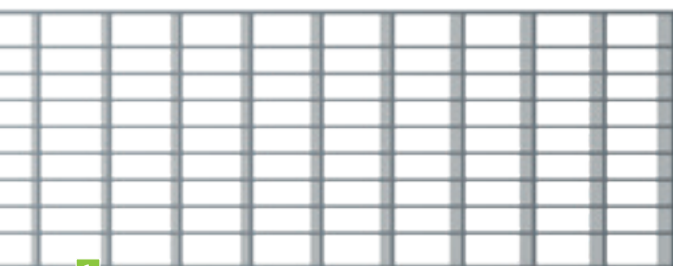
The gratings on the left are  
**beautiful & functional.**  
 On the right it's the **other way around.**



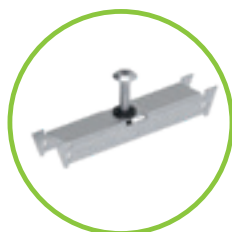
3



2



1



FA bolting-material set

### BG-FLEX FA & FA glass

Gratings	SW, MW, Ø in mm
1 Mesh grating <sup>3)</sup>	MW 30/10
2 Slotted grating	SW 9/85
3 Perforated grating	Ø 6
4 Longitudinal bar grating <sup>3)</sup>	SW 10
5 Design-longitudinal bar grating	SW 6

### BG-FLEX TE

Gratings	SW, MW, Ø in mm
6 Slot inlay	MW 8/8

### BG-FLEX TM

Gratings	SW, MW, Ø in mm
7 Perforated grating	Ø 6
8 Linear grating	SW 5

### BG-FLEX sigma tec

Gratings	SW, MW, Ø in mm
9 ComBee designer grating	Ø 7.3
10 Plastic slotted grating	SW 8/40
11 Mesh grating	SW 30/10

<sup>1)</sup> Classes according to EN 1433:

A 15 kN | B 125 kN | C 250 kN

D 400 kN | E 600 kN | F 900 kN

<sup>2)</sup> Material:

V: Galvanised | E: Stainless steel | PA6: Polyamide plastic

<sup>3)</sup> FA bolting-material set

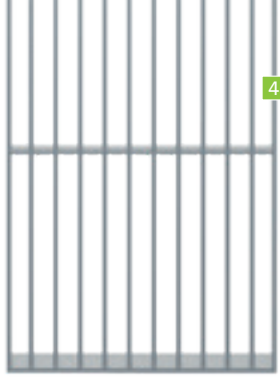
Optional attachment with bolting-material set



11







4



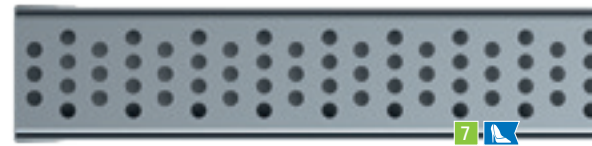
5



6

### Facade channels

	CW 100	CW 130	CW 150	CW 200	CW 250	class <sup>1)</sup>	Material <sup>2)</sup>
	✓	✓	✓	✓	✓	walkable	V, E
						walkable	V, E
		✓		✓	✓	walkable	V, E
	✓	✓	✓	✓	✓	walkable	V, E
	✓	✓	✓	✓		walkable	E



7



8

### Terrace slot channels

	NW 100	class <sup>1)</sup>	Material <sup>2)</sup>
	✓	walkable	E

### Terrace channels

	CW 60	class <sup>1)</sup>	Material <sup>2)</sup>
	✓	walkable	E
	✓	walkable	E

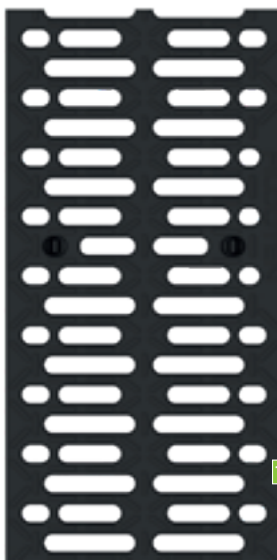
### Drainage channel system

	NW 100	class <sup>1)</sup>	Material <sup>2)</sup>
	✓	B, C	PA6
	✓	C	PA6
	✓	C	E



[www.say.bg/en/blacklabel\\_pdf](http://www.say.bg/en/blacklabel_pdf)

5 9 **BG-BLACKLABEL**  
design line



10

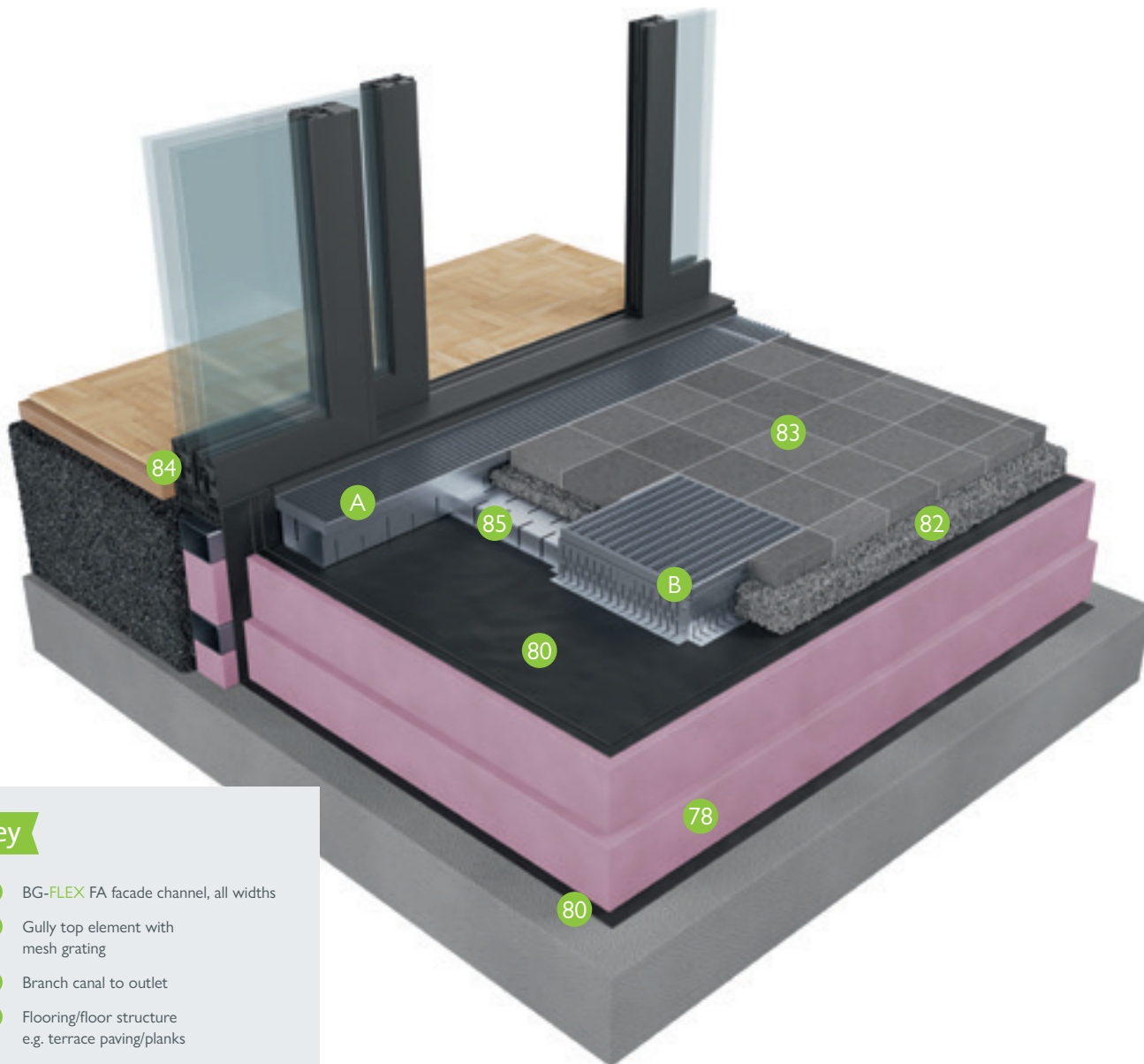


9



# BG-FLEX<sup>FA</sup>

Facade channel

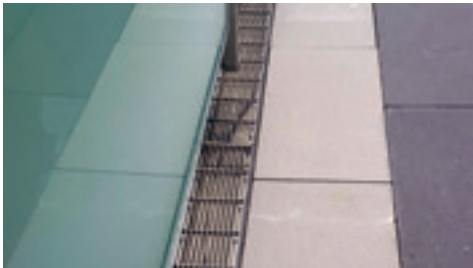


## Key

- A BG-FLEX FA facade channel, all widths
- B Gully top element with mesh grating
- 85 Branch canal to outlet
- 83 Flooring/floor structure e.g. terrace paving/planks
- 82 Construction according to planner such as gravel bed or drainage concrete
- 80 Sealing foil
- 78 Thermal insulation
- 84 Door or facade construction



# References



## BG-FLEX FA and glass facade channels

### norm requirements for facade channels

When a facade channel is used, the gener sealing connection height of 10 cm can be reduced to 3 cm and/or 1 cm.

The sealing connection heights are stipulated in Austrian standard (ÖNORM) B 3691 and are to be complied with on site.

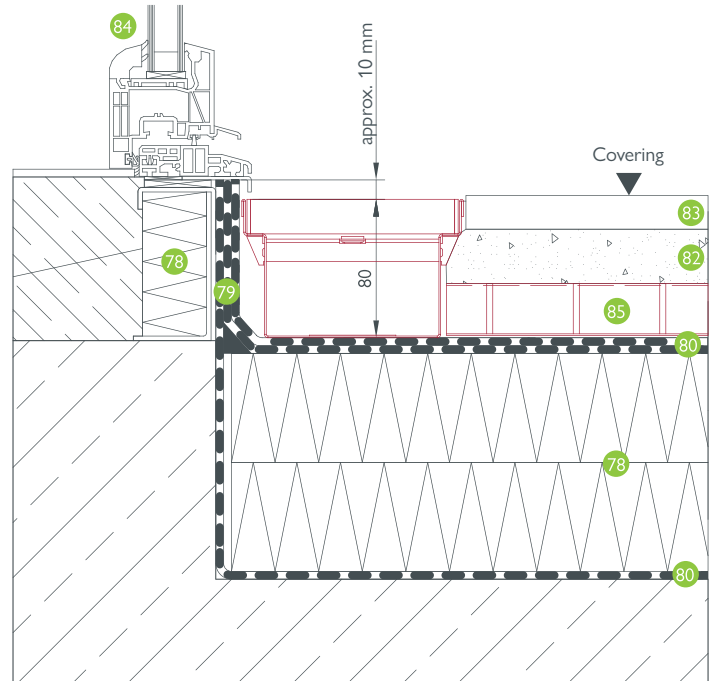
### Key points of Austrian standard ÖNORM B 3691:

There is a differentiation between the following applications: wall, door or window connections

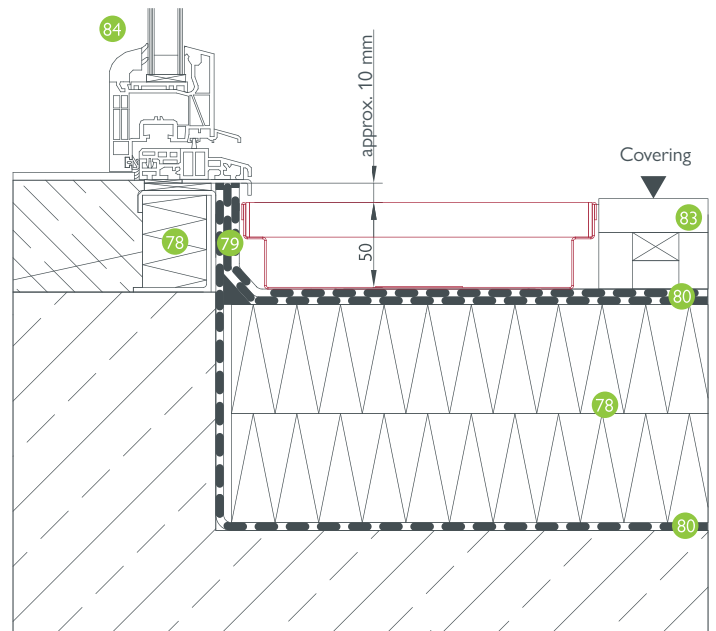
- unprotected area
- partly protected area
- protected area

### Further important requirements under Austrian standard B 3691:

- The cross section of the hydraulic channel must be adapted for local conditions
- For roof drainage, branch channels are to be planned so that they are underneath the coverings in the gravel bed or underneath bound coverings
- Perforated or closed side walls of the drainage channel
- For variable-height drainage channels, height adjustment should be possible when mounted
- For facade channels mounted in front of the soffit, the area between door element and channel must have a 5° slope. In such case, the channel must be extended at least 20 cm beyond the door reveal width on both sides.



BG-FLEX FA facade channel, width 130 – terrace door



BG-FLEX FA facade channel, width 200 – terrace door

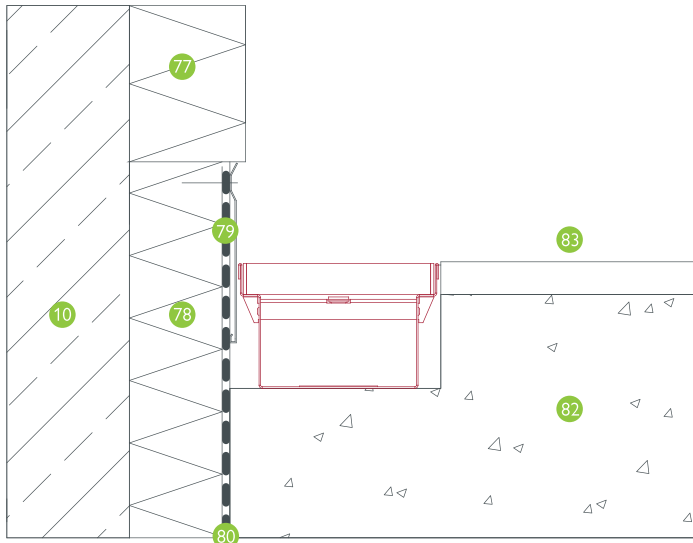
## Connections of door and window elements in line with Austrian Standard B 3691

min. width of channel in mm	min. height of the channel in mm	minimum height above covering	Recommended product
Partially protected situation			
120	80	10	FA width 130, construction height 80
200	40	10	FA width 200, construction height 50
Unprotected location			
120	180	10	FA width 130, construction height 180
200	90	10	FA width 200, construction height 90

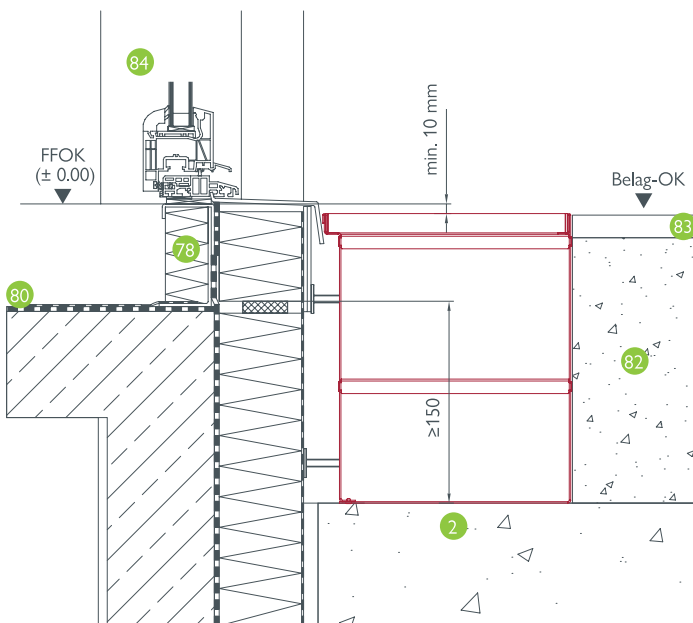


**NOTE:** Galvanised channel elements must not be laid on fresh lime or cement mortar and not grouted with acetic silicone in order to prevent increased corrosion.

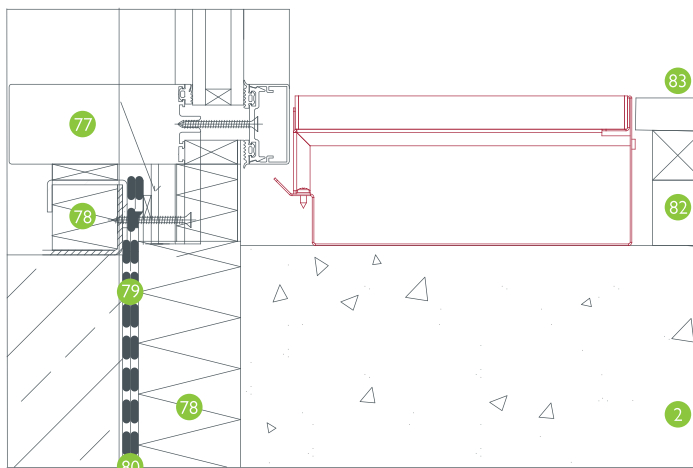
If you require more detailed information, our technical department will be pleased to assist you. Please do not hesitate to contact us!



BG-FLEX FA facade channels, RB 130 – wall



BG-FLEX base plinth channel, width 250, door connection



BG-FLEX FA facade channel, width 200 – glass facade

## Key

- 2 Load-bearing gravel layer
- 10 Concrete foundation
- 77 Facade construction
- 78 Thermal insulation
- 79 Minimum connection height in accordance with Austrian standard B 3691
- 80 Sealing foil
- 81 Floor structure
- 82 Sub-construction according to planer: such as pedestal-supported terrace decking
- 83 Covering: e.g. wooden decking
- 84 Door construction
- 85 Branch canal to outlet
- 86 Joists with thermal insulation
- 87 Wooden facade

## BG-FLEX omega

## BG-FLEX sigma tec

**1) A+B** The following BG installation and maintenance guidelines and installation examples are provided for standard applications. The load class and the installation location according to EN 1433 have to be adapted to the location conditions from the planner. The generally recognised technical rules and regulations must be observed. In special cases, please contact the BG Technical Support team.

**2.1) A+B** A recess in accordance with the installation examples must be provided to be able to create epoxy resin grouting, or the channel will be concreted with the base plate.

**2.2) A+B** The channel elements should be laid according to the laying plan/ installation instructions in the designated location and rotated correctly to be able to establish a sealed flange connection – attention should be paid to the equal size/height of the flanges.

**2.3) A** First, the pipe nozzles/outlet piece has to be connected to the sewer and levelled in height with the lower nut of the feet (do not tighten the second nut yet) – channel edge approx. 1-1.5 mm below the level of the finished floor.

**2.3) B** First, the pipe nozzles/outlet piece have to be connected to the sewer and levelled in height with the lower nut of the supports (do not tighten the second nut yet) – the channel edge provides the level of the finished floor. If a sump pit frame or a sump pit basin is used (instead of connection to the sewer), place this over the sump pit first and level accordingly.

**2.4) A+B** Clean the flanges of the channel elements thoroughly (dirt must be removed) and bolt together including the seal – the bolt material is included in the scope of delivery as standard.

**2.5) A+B** When bolting the flanges, take care to ensure the exact orientation of the channel run (plumb line, scale beam).

**2.6) A+B** Once the entire run is aligned and levelled, it must be secured against slipping by concreting or grouting – to this end, tighten the second nut on the feet from above and dowel them or set them in concrete locally.

**2.7) A+B** We recommend covering the channel with pour protection to avoid concrete spills on the channel surface (e.g. by masking).

**2.8) A** During concreting or grouting, a spacer which later creates the groove for a high elasticity joint between the channel wall and the floor must be inserted.

**2.8) B** The perforated flange plate must be evenly concreted/grouted.

**2.9) A+B** When applying the grouting, care must be taken to ensure that it fully encloses the external contour of the channel, without forming bubbles. The channel must lie 100% flat. Otherwise the channel body may deform under loading at a later point.

**2.10) A+B** When pouring and moving the concrete, take care that the position and shape of the channel body does not change.

**3) A** We recommend creating a maintenance joint between the BG-FLEX omega channel and the carriageway connection. The maintenance joint should be installed using a high elasticity sealant. Apply coating in accordance with the coating manufacturer's specifications.

**4) A** all adjoining covering surfaces should be permanently approx. 1-1.5 mm higher than the surface of the channel in order to ensure the proper water drainage.

**5) A+B** Cleaning and maintenance work: In areas in which higher exposure to chemical substances (e.g. de-icing chemicals, acids, bases, etc.) is to be expected, we recommend cleaning the channel regularly in order to prevent deposits.

## BG-FLEX stone

The extractable stone pan can be fitted with terrace tiles or pavers on site. It can be extracted anytime for cleaning. The support brackets for the stone pan can be fitted in either 20 or 30 mm according to the thickness of the tiles, pavement. The channel body features a one-sided chamfered to be able to install the channel next to an upright wall or parapet

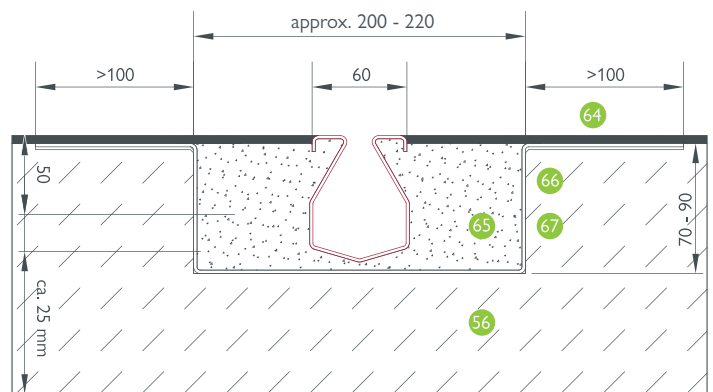
The installation of the channel body has to be done in permeable concrete or a gravel bed. In a bound pavement an elastic joint seal is compulsory to absorb shear forces.

## BG-FLEX TM terrace channel

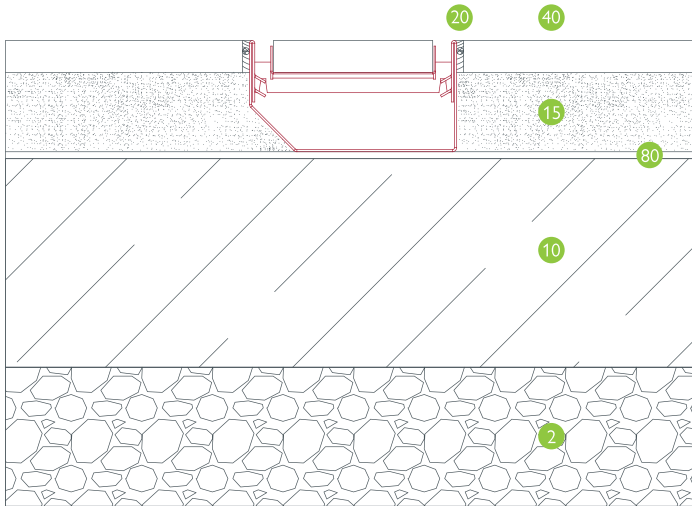
The terrace channel is used for drainage of terraces with terrace paving. Because of their low 30 mm height they can be placed anywhere between paving plates on the gravel without any special substructure being required.

## BG-FLEX TE terrace slot channel

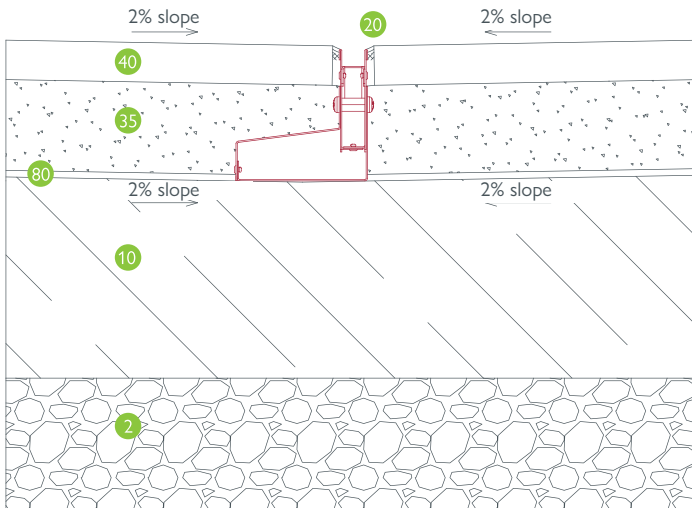
The terrace slot channel is mainly used for the drainage of terraces and gardens. The key advantage is that this channel enables drainage on two levels – the floor covering and the underlying base plate.



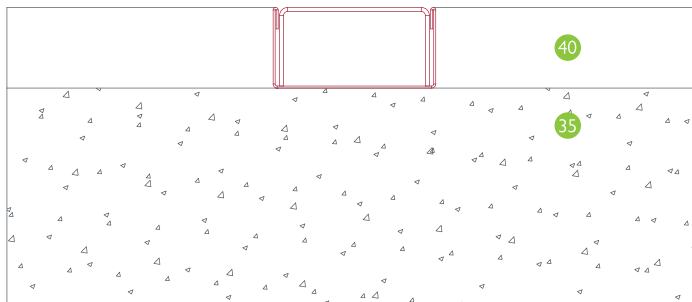
**NOTE:** Galvanised channel elements must not be laid on fresh lime or cement mortar and not grouted with acetic silicone in order to prevent increased corrosion. For detailed questions, our technical department will be pleased to assist you. Please do not hesitate to contact us!



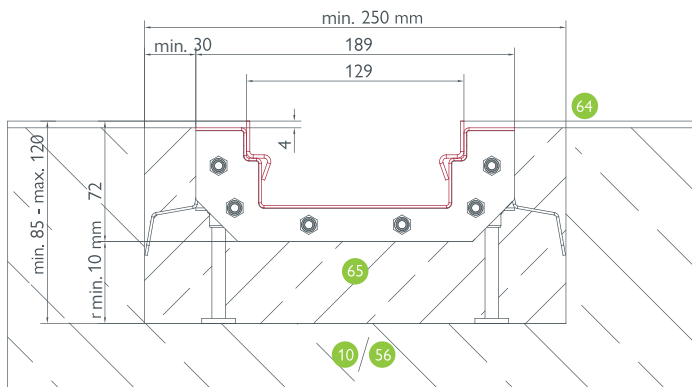
BG-FLEX stone, NW 150, paving



BG-FLEX Terrace slot channel, SW 18, on concrete slab



BG-FLEX TM terrace channel, RB 60 - paving



BG-FLEX sigma tec, NW 150, coating cl. C

## Key

- 2 Load-bearing gravel layer
- 10 Concrete foundation
- 15 Permeable concrete
- 20 Permanently elastic seal
- 35 Grit bed
- 40 Paving
- 56 Steel-reinforced concrete surface
- 64 Coating according to planner requirements ca. 4-5 mm
- 65 Grout e.g. Triflex frame grout or equivalent
- 66 Primer e.g. Triflex Cryl Primer 276 or equivalent
- 67 Building sealing with fleece reinforcement e.g. triflex pro detail or equivalent



[www.say.bg/en/print](http://www.say.bg/en/print)

BG-Graspointner GmbH  
Gessenschwandt 39  
4882 Oberwang  
AUSTRIA

Phone: +43 6233/8900-0

Fax: +43 6233/8900-303

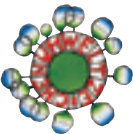
E-mail: [office@bg-graspointner.com](mailto:office@bg-graspointner.com)

Web: [www.bg-graspointner.com](http://www.bg-graspointner.com)

Find out more about our dedication to sustainable print products in our blog article.



PurePrint®  
innovated by gugler\* Drucksinn  
Healthy. Residue-free.  
Climate-positive. [drucksinn.at](http://drucksinn.at)



Printed according to criteria of the Austrian Eco-Label "printed products". gugler\*print, Melk, UWZ no. 609, [www.gugler.at](http://www.gugler.at)



This paper is from material from well-managed, FSC®-certified forests and other controlled sources.



\*Our contribution to the reforestation project of BOKU Vienna in Ethiopia.

Your partner for BG-Graspointner drainage systems.

