



GRASPOINTNER  
Sustainable innovation.



Strength  
when it's  
needed most.

## BG-CLASSIC

BGZ-S heavy-duty channel  
BG-SI safety channels  
BG-SL slot channels

Drainage channel systems

Class E 250 – F 900



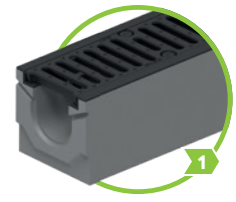
# Every day for **years** **Top performance.** BG-CLASSIC

What makes a product a classic? Quite simply: top performance at all times. That is exactly what you get with our BG-CLASSIC channel systems. Discover impressive ruggedness and durability delivering superior drainage performance, also in the face of the toughest challenges.

- Maximum flexibility and variability; suitable for installation in a wide array of environments
- Easy handling and assembly whilst delivering maximum performance.

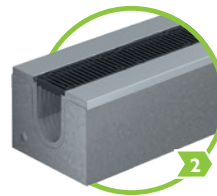


GRASPOINTNER  
Sustainable innovation.



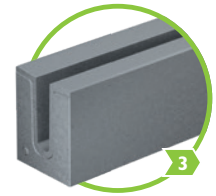
**BG-CLASSIC BGZ-S**  
Heavy-duty channel  
up to class F 900

pages 4 – 11



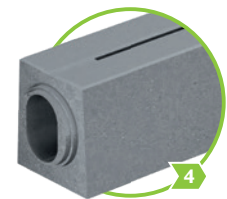
**BG-CLASSIC BG-SI**  
Safety channel  
up to class F 900

12 – 17



**BG-CLASSIC BG-SL**  
Slot channel  
up to class F 900

18 – 19



**BG-CLASSIC SL**  
Slot channels  
up to class F 900

20 – 35



Technical data: [www.say.bg/en/bg-classic](http://www.say.bg/en/bg-classic)

## BG-CLASSIC channel systems sorted by application areas:

country roads	<b>1</b> 2 3 4	logistics area	<b>1</b> <b>2</b> 3 4
container terminal	<b>1</b> <b>2</b> 3 4	parking area (truck)	<b>1</b> 2 3 4
airport (airside)	<b>1</b> <b>2</b> <b>3</b> <b>4</b>	parking area (car)	<b>1</b> 2 3 4
pedestrian zones	<b>1</b> 2 3 4	heavy-duty areas	<b>1</b> <b>2</b> 3 4
harbour	<b>1</b> <b>2</b> 3 4	garage	<b>1</b> 2 3 4
storage area	<b>1</b> 2 3 4		

# The **all-rounder:** Always a force to be reckoned with.

For areas that need to withstand heavy loads: High load class up to F 900; suitable for asphalt surfaces; channel with cast iron edge set in concrete in Z profile; gratings can be bolted up to 8 times per metre; fittings can be replaced at any time.

## Class F 900

### Secure hold for the grate

- ductile iron grating in class D to F available
- ductile iron slotted grating, ductile iron longitudinal bar grating and depending on nominal width also closed covers available
- also the intelligent four-point quick-locking
- is available in classes C to E

### Cast iron Z-edge

- solid edge in concrete with anchoring ribs
- recesses for bolting and protection against longitudinal movement

### Safety joint

- sealable safety seam enables a tight connection



### Boltable ductile cast iron gratings

- extremely stable thanks to the quadruple safety bolting
- available for gratings class C to F
- easy to maintain thanks to the exchangeable bolting

### Longitudinal movement protection

- pins in grating are retained within the channel edge rail

### Larger sizes of channel body available

- for high load classes up to F 900
- plain surface finish of the outer sidewall
- ease of installation with any surrounding cover layer

### The benefits at a glance:

- optimised for the most demanding application areas
- easy handling, highly practical, reduced construction times
- solid channel body up to load class F 900 kN (type M in accordance with EN 1433)
- high-quality concrete with structural reinforcement
- solid steel edge affords all-around protection
- bolted cast iron gratings with protection against longitudinal movement

### Download here:

Tender text, datasheets, DoP, installation guidelines, installation detail, product drawing, BIM-Data

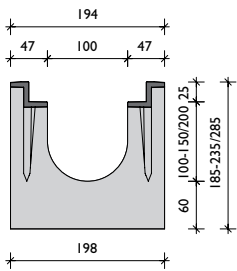
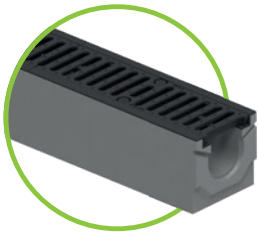


[www.say.bg/en/bg-classic](http://www.say.bg/en/bg-classic)

up to class F 900

# BG-CLASSIC BGZ-S

## Heavy-duty channel SV

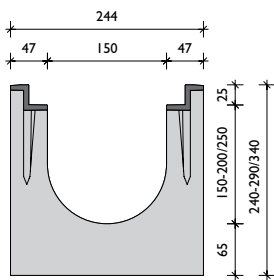


Ductile iron edge

### BG-CLASSIC BGZ-S SV G, NW 100

Drainage channel with cast-in ductile iron edges (G) up to class F, with quick-locking system (SV) or bolt connection

Item no.	Channel body with safety joint	Slope	Weight	Pcs./Pallet
16500	BGZ-S SV G NW 100, no. 0	0,0 %	63,0 kg	15
16530	BGZ-S SV G NW 100, no. 0, L = 500 mm	0,0 %	31,5 kg	20
16501-02	BGZ-S SV G NW 100, no. 5-0, no. 10-0	0,0 %	68,0-73,0 kg	15
16504	BGZ-S SV G NW 100, no. 20-0	0,0 %	83,0 kg	10
16510-19	BGZ-S SV G NW 100, no. 1 to no. 10	0,5 %	64,0-73,0 kg	15
16505	BGZ-S SV G NW 101, no. 0, outlet opening DN 100	0,0 %	60,0 kg	15
16506	BGZ-S SV G NW 101, no. 5-0, outlet opening DN 100	0,0 %	65,0 kg	15
16507	BGZ-S SV G NW 101, no. 10-0, outlet opening DN 100	0,0 %	70,0 kg	15
16509	BGZ-S SV G NW 101, no. 20-0, outlet opening DN 100	0,0 %	80,0 kg	10
Item no.	Gratings incl. quick-locking system	Class acc. to EN 1433	Weight	Pcs./Pallet
23250	Mesh grating 1000/147/25, MW 30/10	D 400	6,4 kg	120
23251	Mesh grating 500/147/25, MW 30/10	D 400	3,3 kg	48
23102	Ductile iron slotted grating 500/147/25, SW 18/120	D 400	4,0 kg	120
22756	Ductile iron elongated bar grating 500/147/25, MW 27/13	E 600	4,3 kg	120
Item no.	Gratings incl. 4 pcs. locking bolts	Class acc. to EN 1433	Weight	Pcs./Pallet
22757	Ductile iron elongated bar grating 500/147/25, MW 27/13	E 600	4,6 kg	120
22053	Ductile iron slotted grating 500/147/25, SW 16/120	F 900	5,7 kg	120
22059	Ductile iron grating 500/147/25, closed cover <sup>1)</sup>	F 900	8,0 kg	120
Item no.	Accessories	Material	Weight	Pcs./Pallet
22200	Sump unit SV G 500/211/510 incl. pipe fair lead DN 150 <sup>2)</sup>	concrete	67,0 kg	10
22510	Silt bucket for sump unit	plastic	0,4 kg	
30030	Odour trap made of PVC sewer pipes DN 150/87°	plastic	3,9 kg	
30019	Odour trap for outlet opening DN 100	plastic	0,2 kg	
31310	Forsheda-sealing for outlet opening DN 100	Elastomer	0,4 kg	
22220	Front cap	galvanised	0,4 kg	
22221	End cap with outlet DN 100	galvanised	0,5 kg	
22280	Bolting material for mesh gratings (1 pc. bolt, 1 pc. nut)			
22281	Bolting material for ductile iron gratings (1 pc. bolt, 1 pc. nut)			



Ductile iron edge

### BG-CLASSIC BGZ-S SV G, NW 150

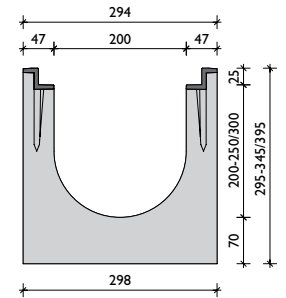
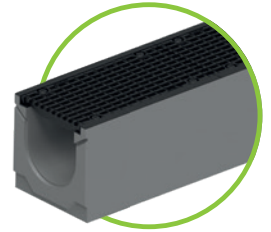
Drainage channel with cast-in ductile iron edges (G) up to class F, with quick-locking system (SV) or bolt connection

Item no.	Channel body with safety joint	Slope	Weight	Pcs./Pallet
16600	BGZ-S SV G NW 150, no. 0	0,0 %	86,0 kg	12
16630	BGZ-S SV G NW 150, no. 0, L = 500 mm	0,0 %	43,0 kg	16
16601-02	BGZ-S SV G NW 150, no. 5-0, no. 10-0	0,0 %	91,0-96,0 kg	12
16604	BGZ-S SV G NW 150, no. 20-0	0,0 %	105,0 kg	8
16610-19	BGZ-S SV G NW 150, no. 1 to no. 10	0,5 %	87,0-95,0 kg	12
16605	BGZ-S SV G NW 151, no. 0, outlet opening DN 150	0,0 %	82,0 kg	12
16606	BGZ-S SV G NW 151, no. 5-0, outlet opening DN 150	0,0 %	86,8 kg	12
16607	BGZ-S SV G NW 151, no. 10-0, outlet opening DN 150	0,0 %	91,5 kg	12
16609	BGZ-S SV G NW 151, no. 20-0, outlet opening DN 150	0,0 %	101,0 kg	8
Item no.	Gratings incl. quick-locking system	Class acc. to EN 1433	Weight	Pcs./Pallet
23260	Mesh grating 1000/197/25, MW 30/10	D 400	10,2 kg	100
23261	Mesh grating 500/197/25, MW 30/10	D 400	5,3 kg	48
22066	Ductile iron slotted grating 500/197/25, SW 18/170	D 400	6,5 kg	100
22764	Ductile iron elongated bar grating 500/197/25, MW 27/13	E 600	7,3 kg	100
Item no.	Gratings incl. 4 pcs. locking bolts	Class acc. to EN 1433	Weight	Pcs./Pallet
22765	Ductile iron elongated bar grating 500/197/25, MW 27/13	E 600	7,6 kg	100
22063	Ductile iron slotted grating 500/197/25, SW 15/75	F 900	11,7 kg	100
Item no.	Accessories	Material	Weight	Pcs./Pallet
22201	Sump unit SV G 500/261/690 incl. pipe fair lead DN 150 <sup>2)</sup>	concrete	95,0 kg	8
22511	Silt bucket for sump unit	plastic	0,7 kg	
30030	Odour trap made of PVC sewer pipes DN 150/87°	plastic	3,9 kg	
31311	Forsheda-sealing for outlet opening DN 150	Elastomer	0,5 kg	
22230	Front cap	galvanised	0,6 kg	
22231	End cap with outlet DN 150	galvanised	0,7 kg	
22280	Bolting material for mesh gratings (1 pc. bolt, 1 pc. nut)			
22281	Bolting material for ductile iron gratings (1 pc. bolt, 1 pc. nut)			

## BG-CLASSIC BGZ-S SV G, NW 200

Drainage channel with cast-in ductile iron edges (G) up to class F, with quick-locking system (SV) or bolt connection

Item no.	Channel body with safety joint	Slope	Weight	Pcs./Pallet
16700	BGZ-S SV G NW 200, no. 0	0,0 %	114,0 kg	8
16716	BGZ-S SV G NW 200, no. 0, L = 500 mm	0,0 %	57,0 kg	8
16701-02	BGZ-S SV G NW 200, no. 5-0, no. 10-0	0,0 %	119,0-124,0 kg	8
16727	BGZ-S SV G NW 200, no. 20-0	0,0 %	134,0 kg	8
16706-15	BGZ-S SV G NW 200, no. 1 to no. 10	0,5 %	115,0-124,0 kg	8
16703	BGZ-S SV G NW 201, no. 0, outlet opening DN 200	0,0 %	107,0 kg	8
16704	BGZ-S SV G NW 201, no. 5-0, outlet opening DN 200	0,0 %	112,0 kg	8
16705	BGZ-S SV G NW 201, no. 10-0, outlet opening DN 200	0,0 %	117,0 kg	8
16729	BGZ-S SV G NW 201, no. 20-0, outlet opening DN 200	0,0 %	127,0 kg	8
Item no.	Gratings incl. quick-locking system	Class acc. to EN 1433	Weight	Pcs./Pallet
23270	Mesh grating 1000/247/25, MW 30/10	D 400	16,0 kg	60
23271	Mesh grating 500/247/25, MW 30/10	D 400	8,2 kg	30
22079	Ductile iron slotted grating 500/247/25, SW 18/220	D 400	8,2 kg	60
22774	Ductile iron elongated bar grating 500/247/25, MW 27/13	E 600	9,1 kg	60
Item no.	Gratings incl. 4 pcs. locking bolts	Class acc. to EN 1433	Weight	Pcs./Pallet
22775	Ductile iron elongated bar grating 500/247/25, MW 27/13	E 600	9,4 kg	60
22073	Ductile iron slotted grating 500/247/25, SW 16/220	F 900	13,8 kg	60
22078	Ductile iron grating 500/247/25, closed cover <sup>1)</sup>	F 900	17,1 kg	60
Item no.	Accessories	Material	Weight	Pcs./Pallet
22204	Sump unit SV G 500/326/740 incl. pipe fair lead DN 200 <sup>2)</sup>	concrete	105,0 kg	6
22512	Silt bucket for sump unit	plastic	0,7 kg	
30040	Odour trap made of PVC sewer pipes DN 200/87°	plastic	7,4 kg	
31312	Forsheda-sealing for outlet opening DN 200	Elastomer	0,6 kg	
22240	Front cap	galvanised	0,7 kg	
22241	End cap with outlet DN 200	galvanised	0,9 kg	
22280	Bolting material for mesh gratings (1 pc. bolt, 1 pc. nut)			
22281	Bolting material for ductile iron gratings (1 pc. bolt, 1 pc. nut)			

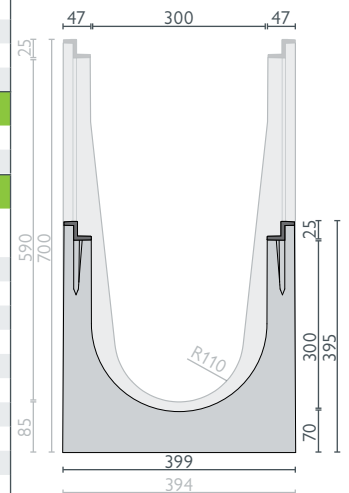
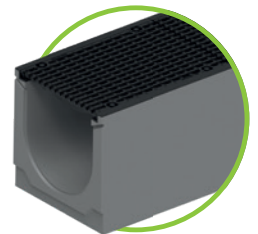


Ductile iron edge

## BG-CLASSIC BGZ-S SV G, NW 300

Drainage channel with cast-in ductile iron edges (G) up to class F, with quick-locking system (SV) or bolt connection

Item no.	Channel body with safety joint	Slope	Weight	Pcs./Pallet
16800	BGZ-S SV G NW 300, no. 0	0,0 %	160,0 kg	6
16840	BGZ-S SV G NW 300, CH 700 mm, L = 2500	0,0 %	671,0 kg	2
16842	BGZ-S SV G NW 300, CH 700 mm, L = 1000	0,0 %	269,0 kg	2
16801	BGZ-S SV G NW 301, no. 0, outlet opening DN 200	0,0 %	162,0 kg	6
16841	BGZ-S SV G NW 301, no. 700, outlet opening DN 200, L = 2500	0,0 %	662,0 kg	2
16843	BGZ-S SV G NW 301, no. 700, outlet opening DN 200, L = 1000	0,0 %	258,0 kg	2
Item no.	Gratings incl. quick-locking system	Class acc. to EN 1433	Weight	Pcs./Pallet
22184	Mesh grating 1000/347/25, MW 30/10	C 250	23,6 kg	30
22185	Mesh grating 500/347/25, MW 30/10	C 250	12,2 kg	24
23180	Ductile iron slotted grating 500/347/25, SW 18/150	D 400	15,2 kg	30
22784	Ductile iron elongated bar grating 500/347/25, MW 25/14 <sup>1)</sup>	E 600	16,5 kg	30
Item no.	Gratings incl. 4 pcs. locking bolts	Class acc. to EN 1433	Weight	Pcs./Pallet
22785	Ductile iron elongated bar grating 500/347/25, MW 25/14	E 600	16,9 kg	30
22083	Ductile iron slotted grating, 500/347/25, SW 16/148 <sup>1)</sup>	F 900	26,1 kg	40
Item no.	Accessories	Material	Weight	Pcs./Pallet
22198	Sump unit SV G 550/565/990, two parts with pipe fair lead DN 200 <sup>2)</sup>	concrete	214,0 kg	2
22213	Silt bucket for sump unit	galvanised	3,2 kg	
30040	Odour trap made of PVC sewer pipes DN 200/87°	plastic	7,4 kg	
31312	Forsheda-sealing for outlet opening DN 200	Elastomer	0,6 kg	
22250	Front cap	galvanised	1,3 kg	
22251	End cap with outlet DN 200	galvanised	1,2 kg	
22253	Front cap, CH 700	galvanised	3,1 kg	
22254	End cap, CH 700, outlet DN 200	galvanised	3,1 kg	
22255	End cap, CH 700, outlet DN 300	galvanised	2,9 kg	
22280	Bolting material for mesh gratings (1 pc. bolt, 1 pc. nut)			
22281	Bolting material for ductile iron gratings (1 pc. bolt, 1 pc. nut)			



Ductile iron edge

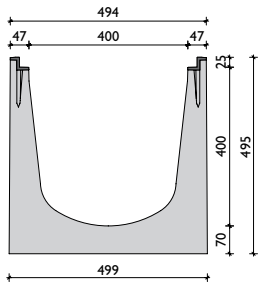
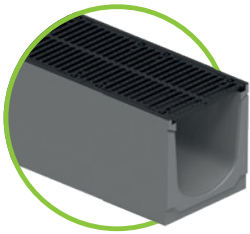


Bolting-material: gratings up to class D – requirement per m: 4 pcs. / ductile iron gratings class E and class F – requirement per m: 8 pcs.

up to class F 900

# BG-CLASSIC BGZ-S

## Heavy-duty channel

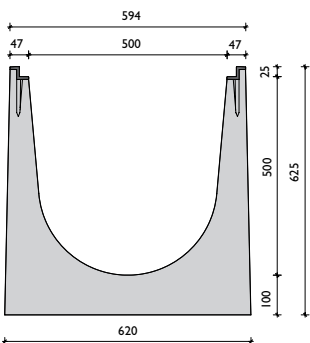
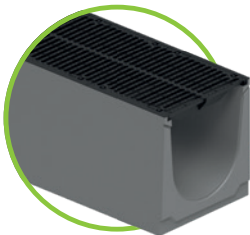


Ductile iron edge

### BG-CLASSIC BGZ-S G, NW 400

Drainage channel with cast-in ductile iron edges (G) up to class F, with bolttable ductile iron gratings

Item no.	Channel body with safety joint	Slope	Weight	Pcs./Pallet
16850	BGZ-S G NW 400, no. 0	0,0 %	225,0 kg	4
16851	BGZ-S G NW 401 no. 0, outlet opening DN 200	0,0 %	218,0 kg	4
Item no.	Gratings incl. 4 pcs. locking bolts	Class acc. to EN 1433	Weight	Pcs./Pallet
22088	Ductile iron slotted grating 500/447/25, SW 18/200	D 400	20,6 kg	20
22090	Ductile iron elongated bar grating 500/447/25, MW 25/14 <sup>1)</sup>	E 600	27,1 kg	20
22087	Ductile iron slotted grating 500/447/25, SW 15/125 <sup>1)</sup>	F 900	41,4 kg	20
Item no.	Accessories	Material	Weight	Pcs./Pallet
22194	Sump unit G 550/565/990, two parts incl. pipe fair lead DN 200 <sup>2)</sup>	concrete	200,0 kg	2
22214	Silt bucket for sump unit	galvanised	3,8 kg	
30040	Odour trap made of PVC sewer pipes DN 200/87°	plastic	7,4 kg	
31312	Forsheda-sealing for outlet opening DN 200	Elastomer	0,6 kg	
22260	Front cap	galvanised	2,1 kg	
22261	End cap with outlet DN 200	galvanised	2,4 kg	
22281	Bolting material for ductile iron gratings (1 pc. bolt, 1 pc. nut)			



Ductile iron edge

### BG-CLASSIC BGZ-S G, NW 500

Drainage channel with cast-in ductile iron edges (G) up to class F, with bolttable ductile iron gratings

Item no.	Channel body with safety joint	Slope	Weight	Pcs./Pallet
16903	BGZ-S G NW 500, no. 0, L = 2500 <sup>1)</sup>	0,0 %	880,0 kg	1
16901	BGZ-S G NW 500, no. 0, L = 1000 <sup>1)</sup>	0,0 %	360,0 kg	1
16902	BGZ-S G NW 501, no. 0, outlet opening DN 200, L = 1000	0,0 %	353,0 kg	1
Item no.	Gratings incl. 4 pcs. locking bolts – M 10	Class acc. to EN 1433	Weight	Pcs./Pallet
22094	Ductile iron slotted grating 500/547/25, SW 18/248 <sup>1)</sup>	D 400	29,8 kg	20
22091	Ductile iron slotted grating 500/547/25, SW 18/248 <sup>1)</sup>	E 600	31,3 kg	20
22092	Ductile iron slotted grating 500/547/25, SW 20/170 <sup>1)</sup>	F 900	48,8 kg	20
Item no.	Accessories	Material	Weight	Pcs./Pallet
22270	Front cap	galvanised	3,1 kg	
22271	End cap with outlet DN 200	galvanised	3,1 kg	
31312	Forsheda-sealing for outlet opening DN 200	Elastomer	0,6 kg	
22281	Bolting material M 10 for ductile iron gratings (1 pc. bolt, 1 pc. nut)			

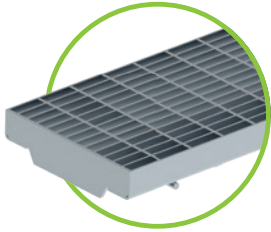


Bolting-material: required per m: 8 pcs.

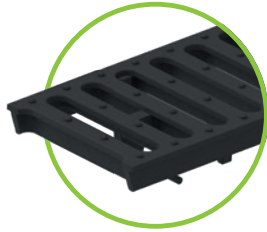




## Gratings: **BG-CLASSIC** BGZ-S heavy-duty channels NW 100, 150, 200, 300, 400, 500



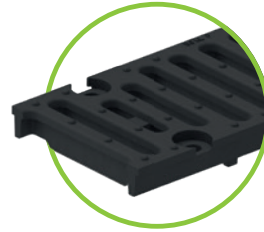
Mesh grating MW 30/10,  
class D – SV system,  
for NW 100 to 200



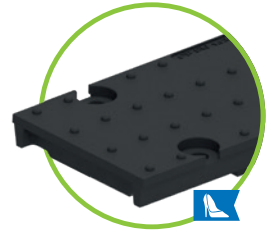
Ductile iron grating SW 18/120,  
18/170, 18/220 – class D –  
quick-locking system,  
for NW 100 to 200



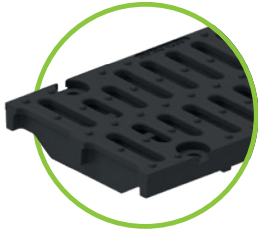
Ductile iron elongated bar grating  
MW 27/13 – class E – quick-locking  
system or 4 point boltable,  
for NW 100 to 200



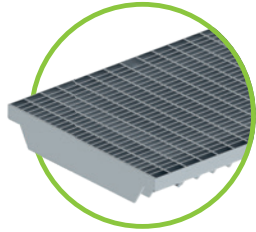
Ductile iron grating SW 16/120  
and/or 16/220,  
class F – 4 point boltable,  
for NW 100 and 200



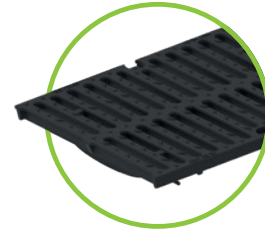
Ductile iron grating class F  
closed cover  
4 point boltable  
for NW 100 and 200



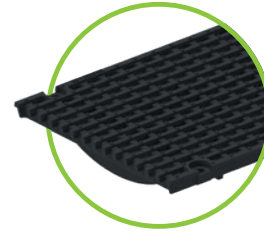
Ductile iron grating SW 15/7  
class F – 4 point boltable,  
for NW 150



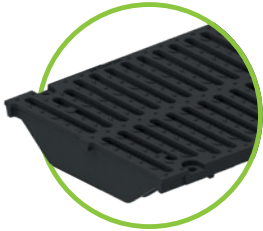
Mesh grating MW 30/10,  
class C – quick-locking system,  
for NW 300



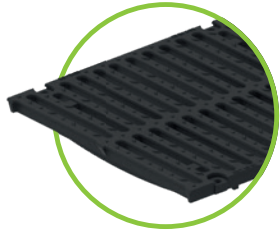
Ductile iron grating  
SW 18/150  
class D – SV system,  
for NW 300



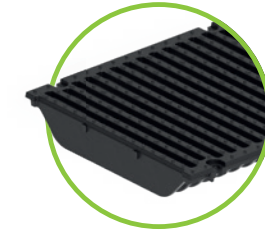
Ductile iron elongated bar grating MW 25/14  
class E – quick-locking system or  
4 point boltable, for NW 300  
only 4 point boltable for NW 400



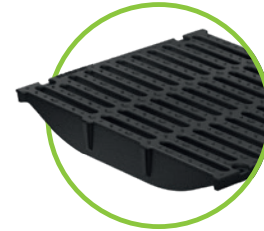
Ductile iron grating  
SW 16/148 – class F  
4 point boltable  
for NW 300



Ductile iron grating 4 point boltable  
class D – SW 18/200 –  
for NW 400  
class D and E – SW 18/248 –  
for NW 500



Ductile iron grating  
SW 15/125 – class F  
4 point boltable for NW 400



Ductile iron grating SW 20/170  
– class F  
4 point boltable  
for NW 500

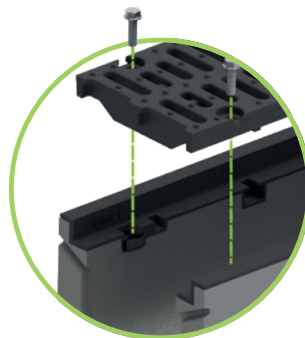


All gratings up to class D 400 kN can be bolted in addition to the quick-locking system if required!

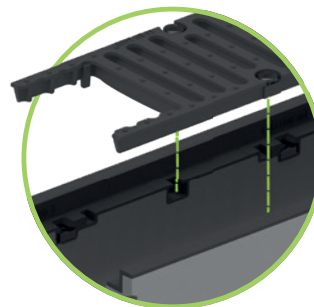
### Quick-locking system or connection with 4 locking bolts.



Tension rods  
for integrated SV system

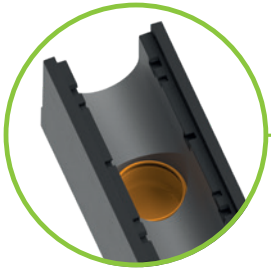


Locking bolts  
can be replaced at any time



Additional protection  
against longitudinal movement

# BG-CLASSIC



Channel with outlet opening,  
DN same as NW – though maximum DN 200

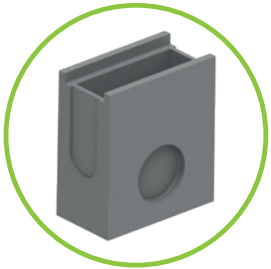


Odour trap for outlet opening consisting of  
3 parts – insert in channels  
with outlet opening  
DN 100 – not for retro-fitting



Forsheda sealing for  
outlet opening – only with  
BGZ-S channel

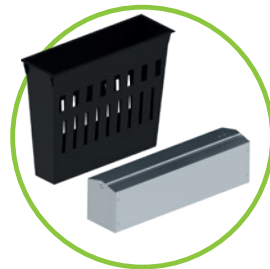
**i** Positioning of outlet opening:  
channel end to outlet centre = 250 mm



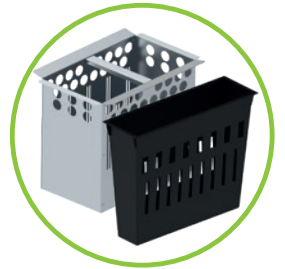
Sump unit for  
BG-CLASSIC standard channel  
L = 500 mm, to fit NW  
with preformed outlet



Sump unit for  
BGZ-S heavy-duty channel  
L = 500 mm, to fit NW  
incl. pipe fair lead



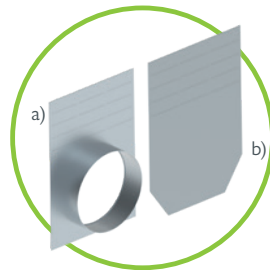
Silt bucket for  
BG-CLASSIC standard channel  
plastic: NW 100  
galvanised: NW 150 and 200



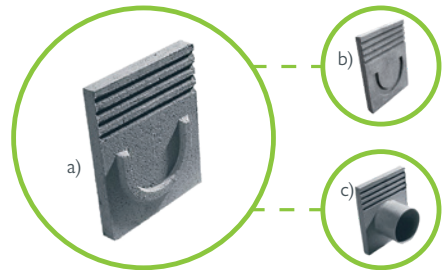
Silt bucket for  
BGZ-S heavy-duty channel  
plastic: NW 100 – 200  
galvanised steel: 2-parts sump  
units NW 300 and 400



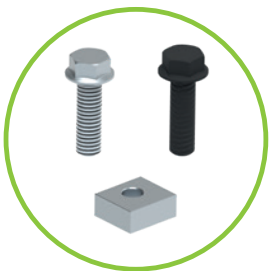
Odour trap made of PVC bends  
for sump units with outlets  
DN 150 or 200



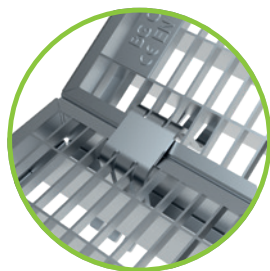
a) End cap with outlet  
b) Front cap  
both for BGZ-S channels



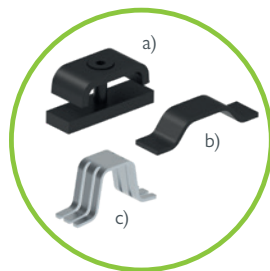
a) Front cap made of concrete for standard channels  
b) End cap made of concrete for standard channels  
c) End cap with outlet made of concrete für standard channels



Bolting material M10, for all mesh-  
or ductile iron gratings,  
only for BGZ-S channels



Locking mechanism  
of the gratings  
with interlocking clip

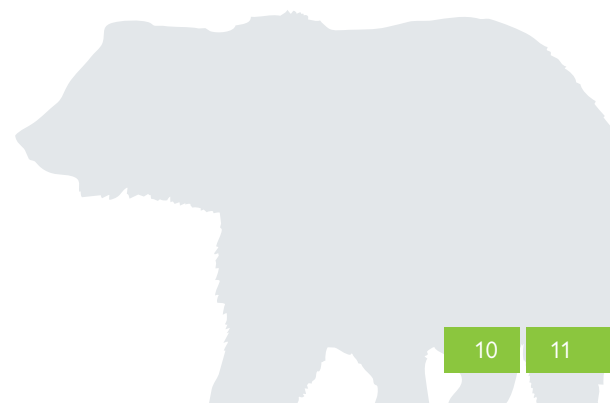
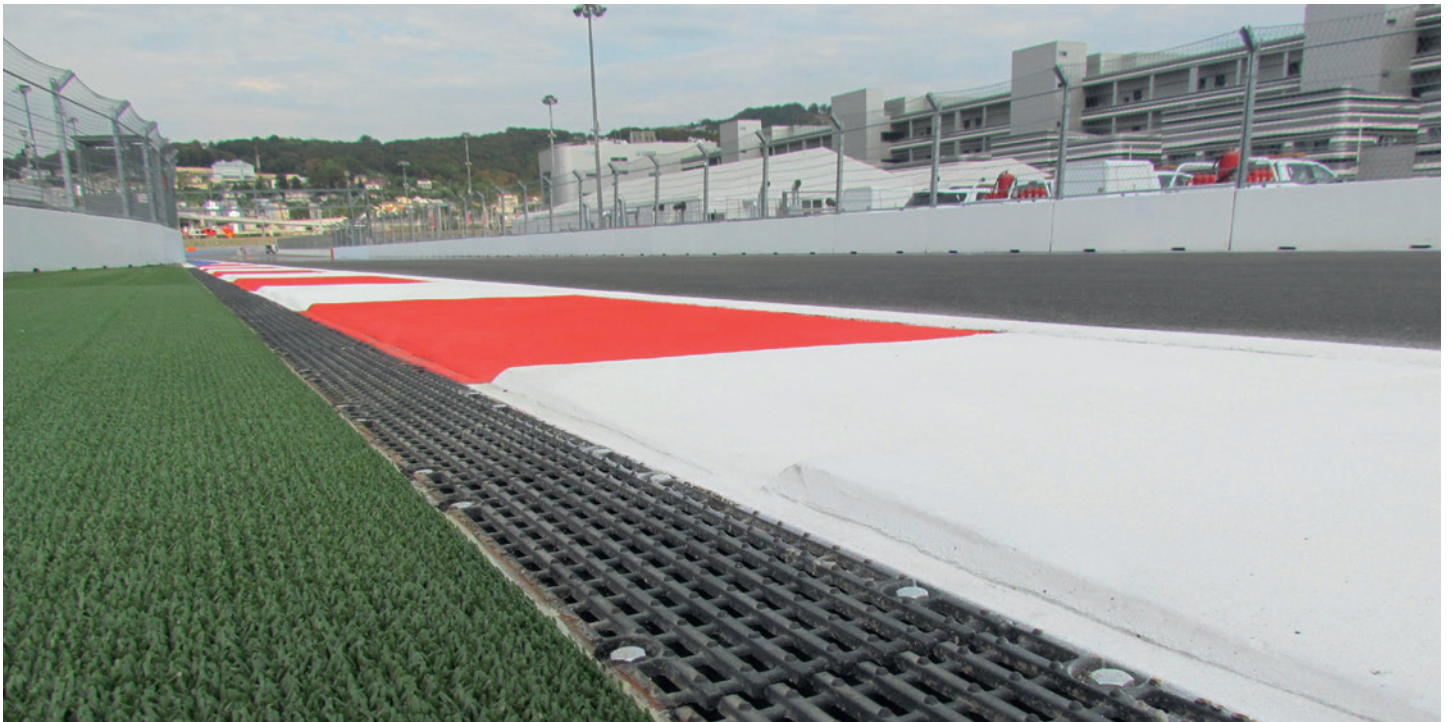


Locking system for gratings  
a) fixing clip  
b) + c) locking clip  
for standard channel



Sealing system suitable for all channels  
with safety seam – for sealing the  
channel joints

# References



# Extremely **stable** and **safe.**

Vehicles and aircraft are becoming heavier and traffic intensity is increasing all the time, presenting a growing challenge for transport infrastructure – this is especially true at airports, for motorways and container terminals. This trend is likely to continue, with no end in sight. The BG-CLASSIC BG-SI safety channel has been specially developed to meet these challenges.

## Exceptionally robust.

The channel has a solid concrete body with appropriate reinforcement and 4-times bolted ductile iron gratings. This makes it perfect for any locations with heavy vehicle movements where high mechanical stresses such as rotary, braking and shear forces can be expected.

## Class F 900

### All-round galvanised steel edge

- fully integrated and 4 mm thick
- channel body casing in the visible area
- sealed all-round edge protection

### Sealable channel system

- moulded safety seam on the front side
- channel can be sealed at the full cross-section

### Pre-formed spacer

- pre-defined distance between elements
- precisely engineered joints
- simple, efficient installation

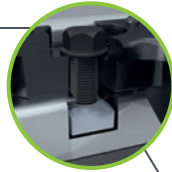
### Extremely time-efficient

- additional concrete casing is eliminated as this is a type I channel in accordance with EN 1433
- no need to wait before laying the adjacent carriageway structure



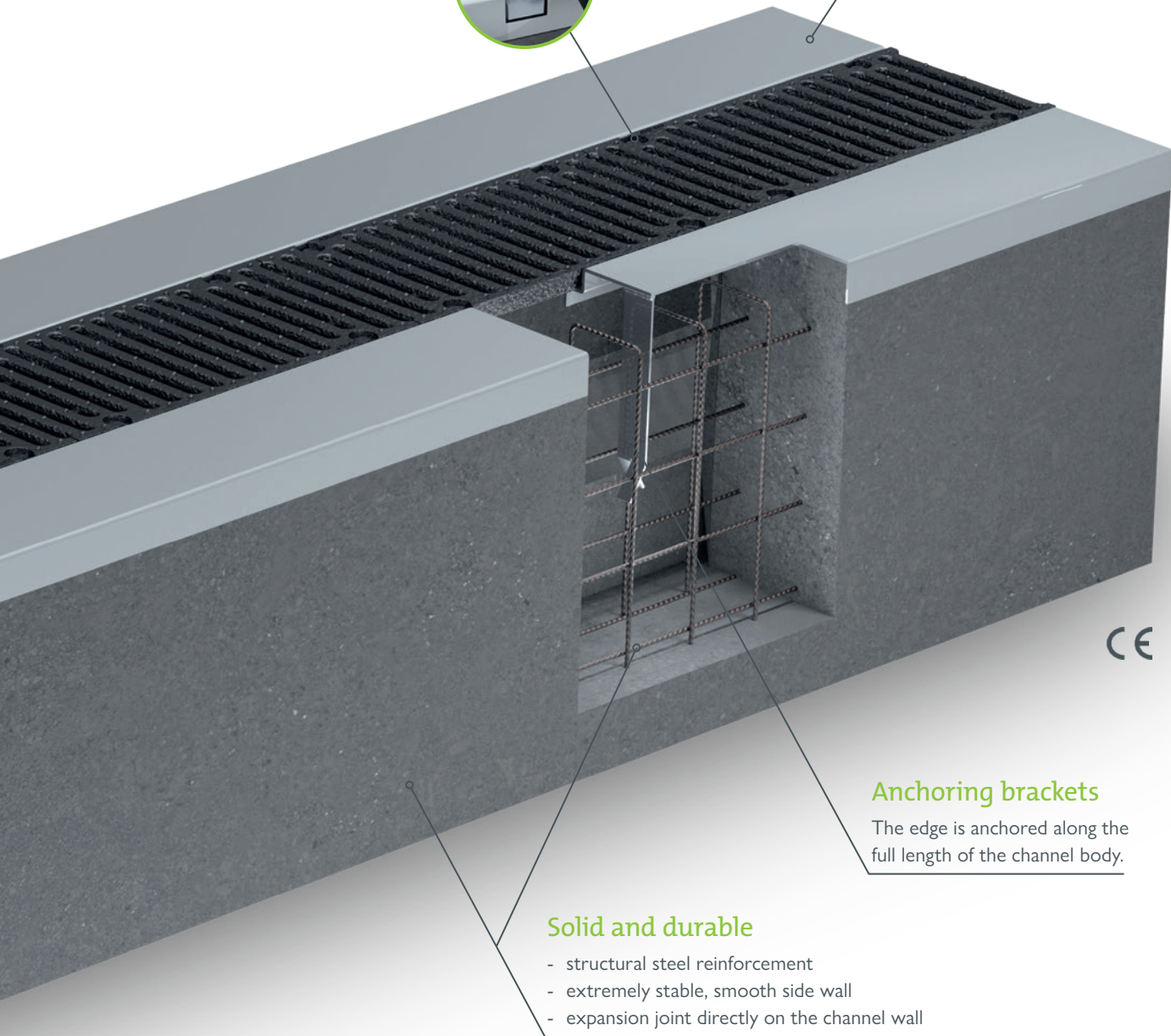
### Boltable ductile cast iron gratings

- extremely stable thanks to the quadruple safety bolting
- easy to maintain thanks to the exchangeable bolting
- protection against longitudinal movement



### Perfect fit

Level edge surface for the best possible, level connection to the local floor covering.



CE

### Anchoring brackets

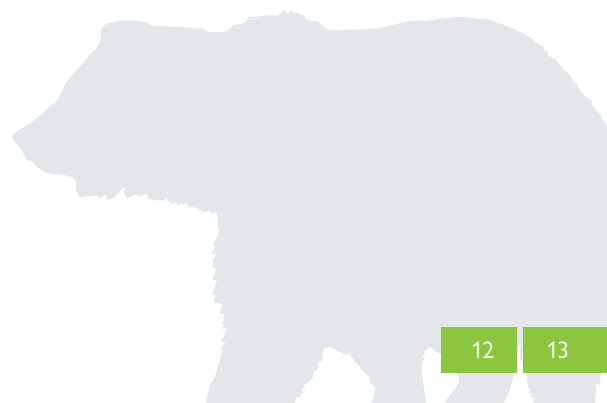
The edge is anchored along the full length of the channel body.

### Solid and durable

- structural steel reinforcement
- extremely stable, smooth side wall
- expansion joint directly on the channel wall

### The benefits at a glance:

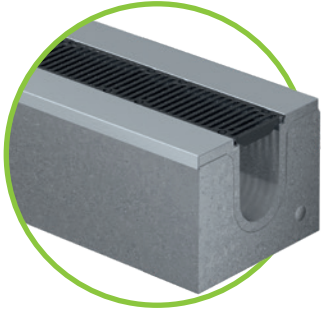
- optimised for the most demanding application areas
- easy handling, highly practical, reduced construction times
- solid channel body up to load class F 900 kN (type I in accordance with EN 1433)
- high-quality concrete with structural reinforcement
- solid steel edge affords all-around protection
- bolted cast iron gratings with protection against longitudinal movement



up to class F 900

# BG-CLASSIC BG-SI

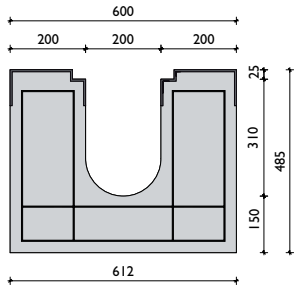
## Safety channel



### BG-CLASSIC BG-SI, NW 200

Channel body with special steel edge up to load class F, with bolted ductile iron grating

Item no.	Channel body with safety joint	Length	Width in mm	Height in mm	Weight values per linear metre
20350	BG-SI safety channel NW 200	2500	612	485	560,0 kg
20352	BG-SI safety channel NW 200	1000	612	485	560,0 kg
20390	Additional charge for bottom drain outlet 500/300				
20392	Additional charge for drain outlet with fitted pipe fair lead DN 200				



with galvanised special edge

### Gratings

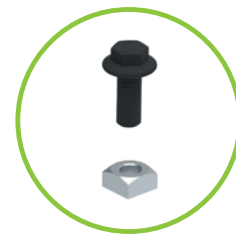
for BG-CLASSIC BG-SI safety channels, NW 200

Item no.	Gratings incl. bolting material – M 12	Length	Width in mm	Pcs./pallet	Weight/pcs.
22191	Ductile iron slotted grating 500/256/25, SW 16/225	500	256	72	11,9 kg

Item no.	Accessories	Length	Width in mm	Height in mm	Weight values per linear metre
20726	Sump unit for BG-SI safety channel NW 200	1000	600	1000	1.300,0 kg
20704	Front or end cap for BG-SI safety channel NW 200	1000	612	485	2,1 kg
20020	Additional charge for corner, for two channels with mitre (channels incl. gratings)				



Moat channel SW 16/225 – class F



Bolting material M 12 for BG-SI safety channels

# References



up to class F 900

# Accessories: for added strength.

Discover the accessories for our safety and slot channels. They are optimally matched to our channels and feature the same high quality.



## Sump unit

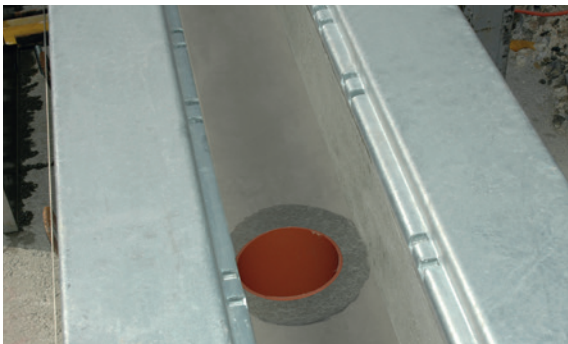
We offer a sump unit with side outlet incl. pipe fair lead DN 200.

The gully is highly versatile and can be installed at any position in the channel line.



## Faceplates

Our perfectly fitting faceplates and end plates ensure tight closure of the channel line.



## bottom outlet

On request, we can also supply BG-CLASSIC BG-SI safety channels with a 300/500 bottom outlet. This can be manufactured with base drainage to fit the nominal width including a pipe fairlead.



## Mitre piece

For installation in polygon shapes, we offer individually customised mitre pieces. Accurately cut channel bodies and gratings create clean, uniform joints on installation.

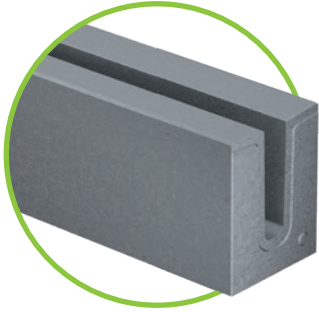


# References



up to class F 900

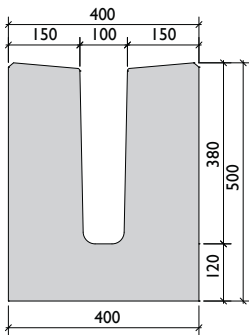
# BG-CLASSIC BG-SL slot channel



## BG-CLASSIC BG-SL, U profile, NW 100

Drainage channel without grating

Item no.	Channel body	Length	Width	Height	Weight values per linear metre
19000	BG-SL slot channel profile U, NW 100, L=2500 mm	2500	400	500	425,0 kg
19001	Additional charge for bottom outlet, outlet opening 600 x 80 mm				



## Accessories

for BG-CLASSIC BG-SL slot channels, profile U

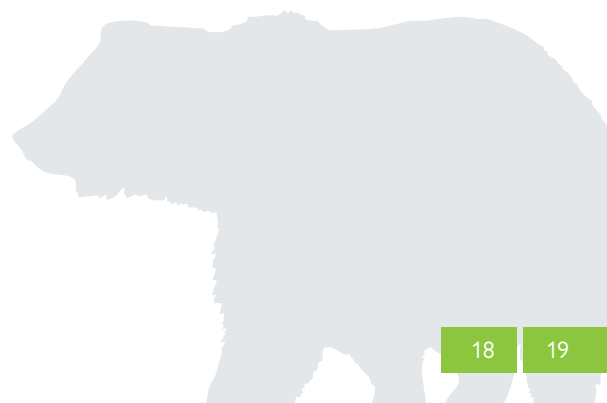
Item no.	Accessories	Weight/ pcs.
19003	Front cap for BG-SL slot channel U profile, NW 100, galvanised	1,0 kg

### The benefits at a glance:

- separates the taxiway and runway from the green area
- slot channel without cover - easy to clean
- angled top edge - for quicker and easier water collection
- adapters allow installation in all radii



# References



# Highly versatile unique expertise.

## Silent and effective.

Despite their wide range of applications, BG slot channels perform extremely well in any situation. They are highly robust and they do not need a grating – as a result, they are maintenance-free and very quiet.

## Strong in every situation.

Our highly versatile slot channels are an important feature in traffic engineering. They provide efficient, reliable drainage for the surfaces of:

## Application areas

Main roads, motorways and tunnels, container terminals, logistics centres, industrial and port facilities, aviation areas.

## High load capacity

Due to the high concrete strength ( $\geq C 45/55$ ) incl. structural steel reinforcement.

Class D 400 – F 900

## Tightly sealed channel joint

Ensured by the supplied gaskets. These must be installed on site. Tongue-and-groove system for each channel element.

## The benefits at a glance:

- different channel profiles for a wide range of applications
- high load capacity up to class D 400, E 600 or F 900 kN
- very variable: option of 0,5 % inner slope, with or without border, expansion joint directly on the channel body
- element length 4000 mm – special lengths on request
- produced and certified in line with EN 1433

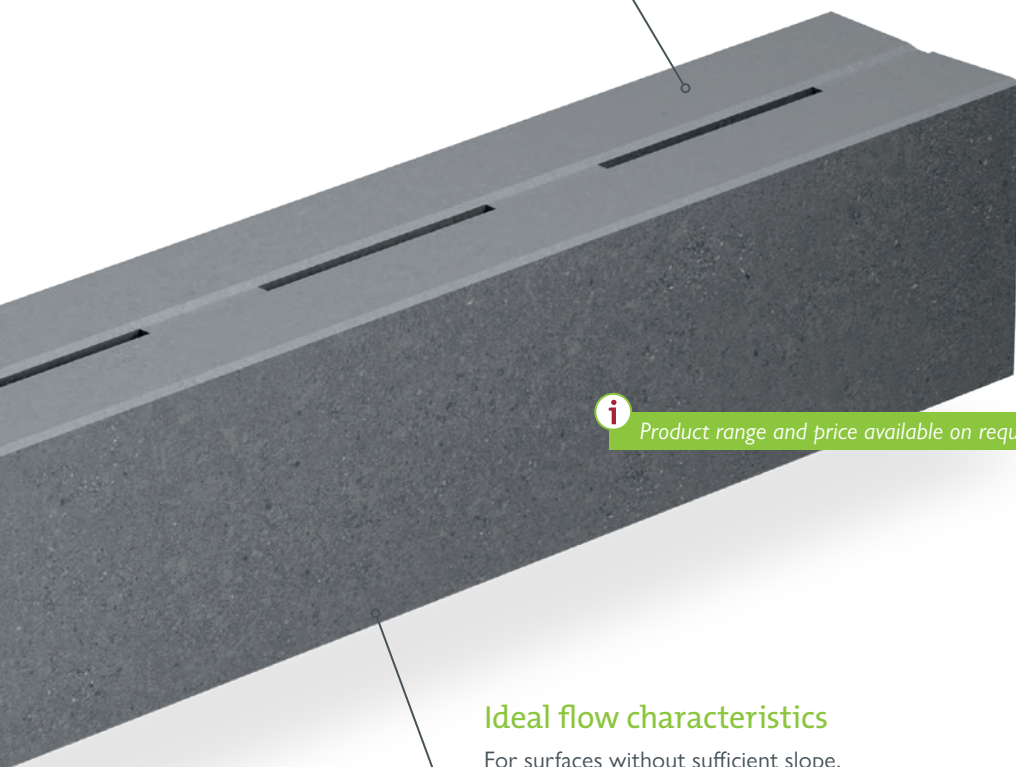


## Unique slot geometry

- suitable for all applications
- interrupted, continuous or covered slot
- also available with a border for installation when there are rising edges

## Optimum drainage performance

Optimum water collection thanks to 3 % surface slope towards the slot.



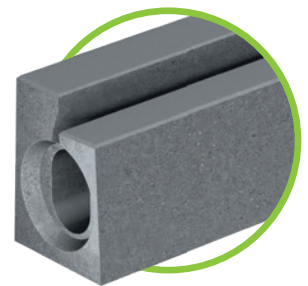
Product range and price available on request

## Ideal flow characteristics

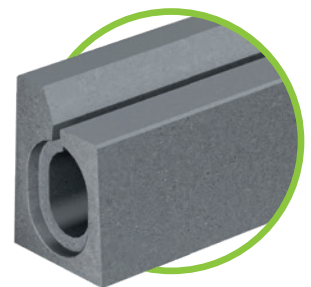
For surfaces without sufficient slope, BG-CLASSIC SL slot channels can be supplied with a pre-installed inner slope of 0,5 %.



BG-CLASSIC SL slot channel with interrupted slot and smaller passages



BG-CLASSIC SL slot channel with covered slot and kerbstone



BG-CLASSIC SL slot channel with continuous slot and kerbstone

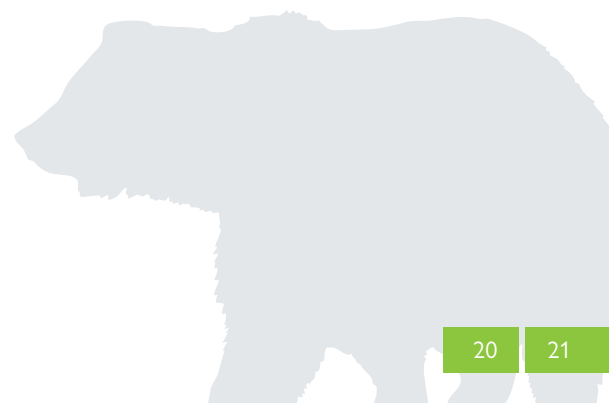
## Send us your project!

Our technical support will be happy to advise you and provide you with an overall quote for your project.

Robert Eder

Tel.: +43 6233/8900-0

E-Mail: [office@bg-graspointner.com](mailto:office@bg-graspointner.com)



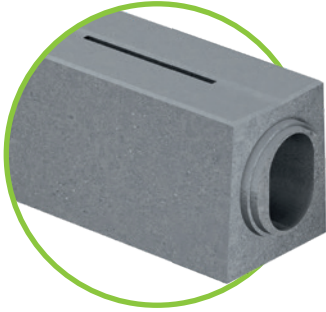
# Extremely **stable** without **fail.**



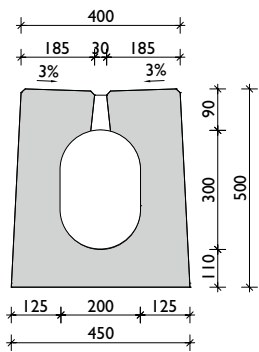
# References



# BG-CLASSIC<sup>SL</sup> slot channel



Profile I-1



## BG-CLASSIC SL, profile I-1, DN 20x30 - class E 600 kN

interrupted slot, inner width 20 x 30 cm, with or without slope

Item no.	Channel body	Length	Width	Height	Weight
50011000	BG slot channel, profile I-1, type T30/30, without slope	4000	400/450	500	1.512,0 kg
50011010	BG slot channel, profile I-1, type T28/28, without slope	4000	400/450	500	1.548,0 kg
50011011	BG slot channel, profile I-1, type T26/26, without slope	4000	400/450	500	1.587,0 kg
50011012	BG slot channel, profile I-1, type T24/24, without slope	4000	400/450	500	1.625,0 kg
50011013	BG slot channel, profile I-1, type T22/22, without slope	4000	400/450	500	1.664,0 kg
50011014	BG slot channel, profile I-1, type T20/20, without slope	4000	400/450	500	1.704,0 kg
50011001	BG slot channel, profile I-1, type G28/30, with 0,5% slope	4000	400/450	500	1.529,0 kg
50011002	BG slot channel, profile I-1, type G26/28, with 0,5% slope	4000	400/450	500	1.568,0 kg
50011003	BG slot channel, profile I-1, type G24/26, with 0,5% slope	4000	400/450	500	1.606,0 kg
50011004	BG slot channel, profile I-1, type G22/24, with 0,5% slope	4000	400/450	500	1.644,0 kg
50011005	BG slot channel, profile I-1, type G20/22, with 0,5% slope	4000	400/450	500	1.683,0 kg

## Accessories

for BG-CLASSIC SL slot channel, profile I-1

Item no.	Accessories	Length	Width	Height	Weight
50011120	Cleaning element (tongue-groove), type T30/30-CO incl. ductile iron grating	1000	400/450	500	394,0 kg
50011160	Cleaning element (tongue-tongue), type T20/20-CS incl. ductile iron grating	1000	400/450	500	442,0 kg
50011121	Sump unit (tongue-groove), type T30/30-VO with outlet incl. ductile iron grating	1000	400/450	500	372,0 kg
50011161	Sump unit (groove-groove), type T30/30-VU with outlet incl. ductile iron grating	1000	400/450	500	338,0 kg
50000011	Shaft base for sump unit, outlet with pipe coupling DN 200	550	550	380	121,0 kg
50011022	Fire protection component type PP (tongue-groove), class D 400 kN	2000	400/500	950	1.540,0 kg
50011071	Exchange element, 5-parts, different lengths available	2100-4000	400/450	500	1.510,0 kg
50011162	Front cap type ZU (tongue)	120	400/450	500	76,0 kg
50011163	End cap type ZZ (groove)	120	400/450	500	51,0 kg
50000021	Lifting grab for profile I-1, consisting of 2 items				4,0 kg



Adapters and curved elements on request



## BG-CLASSIC SL, profile I-1, DN 20x30 - class F 900 kN

interrupted slot, inner width 20 x 30 cm, with or without slope

Item no.	Channel body	Length	Width	Height	Weight
50011100	BG slot channel, profile I-1, type T30/30, without slope	4000	400/450	500	1.512,0 kg
50011110	BG slot channel, profile I-1, type T28/28, without slope	4000	400/450	500	1.548,0 kg
50011111	BG slot channel, profile I-1, type T26/26, without slope	4000	400/450	500	1.587,0 kg
50011112	BG slot channel, profile I-1, type T24/24, without slope	4000	400/450	500	1.625,0 kg
50011113	BG slot channel, profile I-1, type T22/22, without slope	4000	400/450	500	1.664,0 kg
50011114	BG slot channel, profile I-1, type T20/20, without slope	4000	400/450	500	1.704,0 kg
50011101	BG slot channel, profile I-1, type G28/30, with 0,5% slope	4000	400/450	500	1.529,0 kg
50011102	BG slot channel, profile I-1, type G26/28, with 0,5% slope	4000	400/450	500	1.568,0 kg
50011103	BG slot channel, profile I-1, type G24/26, with 0,5% slope	4000	400/450	500	1.606,0 kg
50011104	BG slot channel, profile I-1, type G22/24, with 0,5% slope	4000	400/450	500	1.644,0 kg
50011105	BG slot channel, profile I-1, type G20/22, with 0,5% slope	4000	400/450	500	1.683,0 kg


## Accessories

for BG-CLASSIC SL slot channel, profile I-1

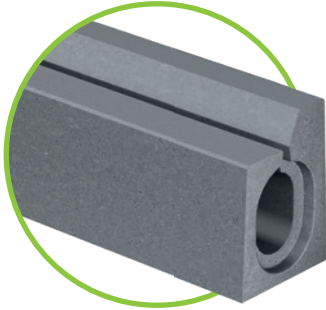
Item no.	Accessories	Length	Width	Height	Weight
50011120	Cleaning element (tongue-groove), type T30/30-CO incl. cast iron cover	1000	400/450	500	394,0 kg
50011160	Cleaning element (tongue-tongue), type T20/20-CS incl. ductile iron grating	1000	400/450	500	442,0 kg
50011121	Sump unit (tongue-groove), type T30/30-VO with outlet incl. ductile iron grating	1000	400/450	500	372,0 kg
50011161	Sump unit (groove-groove), type T30/30-VU with outlet incl. ductile iron grating	1000	400/450	500	338,0 kg
50000011	Shaft base for sump unit, outlet with pipe coupling DN 200	550	550	380	121,0 kg
50011022	Fire protection component type PP (tongue-groove), class D 400 kN	2000	400/500	950	1.540,0 kg
50011071	Exchange element, 5-parts, different lengths available	2100-4000	400/450	500	1.510,0 kg
50011162	Front cap type ZU (tongue)	120	400/450	500	76,0 kg
50011163	End cap type ZZ (groove)	120	400/450	500	51,0 kg
50000021	Lifting grab for profile I-1, consisting of 2 items				4,0 kg



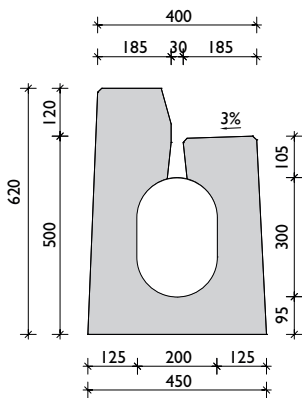
A bicycle-compatible type CY model is available for this profile.

The slot openings are designed so that the slot channels do not present an obstacle or hazard for cyclists when used in road traffic applications. 

# BG-CLASSIC<sup>SL</sup> slot channel



Profile I-3  
border, left



## BG-CLASSIC<sup>SL</sup>, profile I-3, DN 20x30 - class D 400 kN

continuous slot, **border 12 cm left**, with or without slope

Item no.	Channel body	Length	Width	Height	Weight
50013040	BG slot channel, profile I-3, type T30/30, without slope	4000	400/450	500/620	1.704,0 kg
50013050	BG slot channel, profile I-3, type T28/28, without slope	4000	400/450	500/620	1.741,0 kg
50013051	BG slot channel, profile I-3, type T26/26, without slope	4000	400/450	500/620	1.776,0 kg
50013052	BG slot channel, profile I-3, type T24/24, without slope	4000	400/450	500/620	1.809,0 kg
50013053	BG slot channel, profile I-3, type T22/22, without slope	4000	400/450	500/620	1.843,0 kg
50013054	BG slot channel, profile I-3, type T20/20, without slope	4000	400/450	500/620	1.880,0 kg
50013041	BG slot channel, profile I-3, type G28/30, with 0,5% slope	4000	400/450	500/620	1.723,0 kg
50013042	BG slot channel, profile I-3, type G26/28, with 0,5% slope	4000	400/450	500/620	1.757,0 kg
50013043	BG slot channel, profile I-3, type G24/26, with 0,5% slope	4000	400/450	500/620	1.792,0 kg
50013044	BG slot channel, profile I-3, type G22/24, with 0,5% slope	4000	400/450	500/620	1.826,0 kg
50013045	BG slot channel, profile I-3, type G20/22, with 0,5% slope	4000	400/450	500/620	1.860,0 kg

## Accessories

for BG-CLASSIC<sup>SL</sup> slot channel, profile I-3

Item no.	Accessories	Length	Width	Height	Weight
50013060	Cleaning element (tongue-groove), type T30/30-CO incl. cast iron cover	1000	400/450	500/620	462,0 kg
50013027	Cleaning element (tongue-tongue), type T20/20-CS incl. ductile iron grating	1000	400/450	500/620	510,0 kg
50013063	Sump unit (tongue-groove), type T30/30-VO with outlet incl. ductile iron grating	1000	400/450	500/620	415,0 kg
50013030	Sump unit (groove-groove), type T30/30-VU with outlet incl. ductile iron grating	1000	400/450	500/620	406,0 kg
50000011	Shaft base for sump unit, outlet with pipe coupling DN 200	550	550	380	121,0 kg
50013066	Fire protection component type PP (tongue-groove)	2000	400/500	1070	1.739,0 kg
50013074	Front cap type ZU (tongue)	120	400/450	620	83,0 kg
50013075	End cap type ZZ (groove)	120	400/450	620	58,0 kg
50000022	Lifting tool for profile I-3, consisting of 2 items				4,4 kg

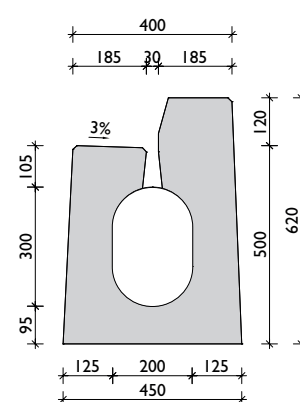
**i** **Adapters on request**

## BG-CLASSIC SL, profile I-3, DN 20x30 - class D 400 kN

continuous slot, **border 12 cm right**, with or without slope

Item no.	Channel body	Length	Width	Height	Weight
50013000	BG slot channel, profile I-3, type T30/30, without slope	4000	400/450	500/620	1.704,0 kg
50013010	BG slot channel, profile I-3, type T28/28, without slope	4000	400/450	500/620	1.741,0 kg
50013011	BG slot channel, profile I-3, type T26/26, without slope	4000	400/450	500/620	1.776,0 kg
50013012	BG slot channel, profile I-3, type T24/24, without slope	4000	400/450	500/620	1.809,0 kg
50013013	BG slot channel, profile I-3, type T22/22, without slope	4000	400/450	500/620	1.843,0 kg
50013014	BG slot channel, profile I-3, type T20/20, without slope	4000	400/450	500/620	1.880,0 kg
50013001	BG slot channel, profile I-3, type G28/30, with 0,5% slope	4000	400/450	500/620	1.723,0 kg
50013002	BG slot channel, profile I-3, type G26/28, with 0,5% slope	4000	400/450	500/620	1.757,0 kg
50013003	BG slot channel, profile I-3, type G24/26, with 0,5% slope	4000	400/450	500/620	1.792,0 kg
50013004	BG slot channel, profile I-3, type G22/24, with 0,5% slope	4000	400/450	500/620	1.826,0 kg
50013005	BG slot channel, profile I-3, type G20/22, with 0,5% slope	4000	400/450	500/620	1.860,0 kg

Profile I-3  
border, right

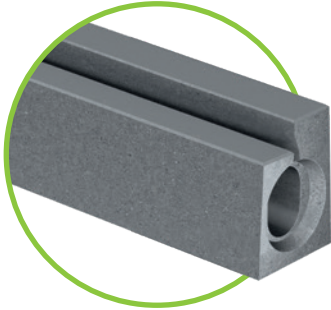


## Accessories

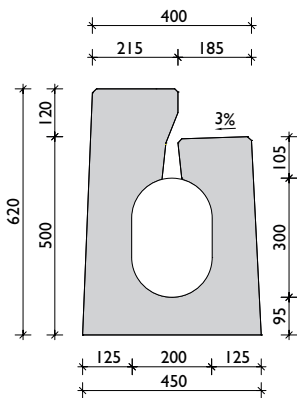
for BG-CLASSIC SL slot channel, profile I-3

Item no.	Accessories	Length	Width	Height	Weight
50013020	Cleaning element (tongue-groove), type T30/30-CO incl. cast iron cover	1000	400/450	500/620	462,0 kg
50013027	Cleaning element (tongue-tongue), type T20/20-CS incl. ductile iron grating	1000	400/450	500/620	510,0 kg
50013023	Sump unit (tongue-groove), type T30/30-VO with outlet incl. ductile iron grating	1000	400/450	500/620	415,0 kg
50013030	Sump unit (groove-groove), type T30/30-VU with outlet incl. ductile iron grating	1000	400/450	500/620	406,0 kg
50000011	Shaft base for sump unit, outlet with pipe coupling DN 200	550	550	380	121,0 kg
50013026	Fire protection component type PP (tongue-groove)	2000	400/500	1070	1.739,0 kg
50013034	Front cap type ZU (tongue)	120	400/450	620	83,0 kg
50013035	End cap type ZZ (groove)	120	400/450	620	58,0 kg
50000022	Lifting tool for profile I-3, consisting of 2 items				4,4 kg

# BG-CLASSIC<sup>SL</sup> slot channel



Profile I-5  
border, left



## BG-CLASSIC SL, profile I-5, DN 20x30 - class D 400 kN

continuous slot, **border 12 cm left**, with or without slope

Item no.	Channel body	Length	Width	Height	Weight
50015040	BG slot channel, profile I-5, type T30/30, without slope	4000	400/450	500/620	1.741,0 kg
50015050	BG slot channel, profile I-5, type T28/28, without slope	4000	400/450	500/620	1.776,0 kg
50015051	BG slot channel, profile I-5, type T26/26, without slope	4000	400/450	500/620	1.808,0 kg
50015052	BG slot channel, profile I-5, type T24/24, without slope	4000	400/450	500/620	1.844,0 kg
50015053	BG slot channel, profile I-5, type T22/22, without slope	4000	400/450	500/620	1.880,0 kg
50015054	BG slot channel, profile I-5, type T20/20, without slope	4000	400/450	500/620	1.912,0 kg
50015041	BG slot channel, profile I-5, type G28/30, with 0,5% slope	4000	400/450	500/620	1.758,0 kg
50015042	BG slot channel, profile I-5, type G26/28, with 0,5% slope	4000	400/450	500/620	1.792,0 kg
50015043	BG slot channel, profile I-5, type G24/26, with 0,5% slope	4000	400/450	500/620	1.827,0 kg
50015044	BG slot channel, profile I-5, type G22/24, with 0,5% slope	4000	400/450	500/620	1.861,0 kg
50015045	BG slot channel, profile I-5, type G20/22, with 0,5% slope	4000	400/450	500/620	1.895,0 kg

## Accessories

for BG-CLASSIC SL slot channel, profile I-5

Item no.	Accessories	Length	Width	Height	Weight
50015060	Cleaning element (tongue-groove), type T30/30-CO incl. cast iron cover	1000	400/450	500/620	467,0 kg
50015027	Cleaning element (tongue-tongue), type T20/20-CS incl. ductile iron grating	1000	400/450	500/620	515,0 kg
50015063	Sump unit (tongue-groove), type T30/30-VO with outlet incl. ductile iron grating	1000	400/450	500/620	420,0 kg
50015030	Sump unit (groove-groove), type T30/30-VU with outlet incl. ductile iron grating	1000	400/450	500/620	411,0 kg
50000011	Shaft base for sump unit, outlet with pipe coupling DN 200	550	550	380	121,0 kg
50015074	Front cap type ZU (tongue)	120	400/450	620	84,0 kg
50015075	End cap type ZZ (groove)	120	400/450	620	59,0 kg
50000022	Lifting grab for profile I-5, consisting of 2 items				4,4 kg

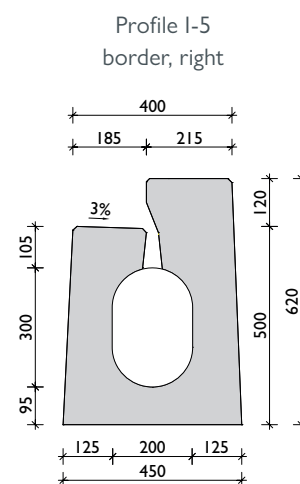


Adapters on request

## BG-CLASSIC SL, profile I-5, DN 20x30 - class D 400 kN

continuous slot, **border 12 cm right**, with or without slope

Item no.	Channel body	Length	Width	Height	Weight
50015000	BG slot channel, profile I-5, type T30/30, without slope	4000	400/450	500/620	1.741,0 kg
50015010	BG slot channel, profile I-5, type T28/28, without slope	4000	400/450	500/620	1.776,0 kg
50015011	BG slot channel, profile I-5, type T26/26, without slope	4000	400/450	500/620	1.808,0 kg
50015012	BG slot channel, profile I-5, type T24/24, without slope	4000	400/450	500/620	1.844,0 kg
50015013	BG slot channel, profile I-5, type T22/22, without slope	4000	400/450	500/620	1.880,0 kg
50015014	BG slot channel, profile I-5, type T20/20, without slope	4000	400/450	500/620	1.912,0 kg
50015001	BG slot channel, profile I-5, type G28/30, with 0,5% slope	4000	400/450	500/620	1.758,0 kg
50015002	BG slot channel, profile I-5, type G26/28, with 0,5% slope	4000	400/450	500/620	1.792,0 kg
50015003	BG slot channel, profile I-5, type G24/26, with 0,5% slope	4000	400/450	500/620	1.827,0 kg
50015004	BG slot channel, profile I-5, type G22/24, with 0,5% slope	4000	400/450	500/620	1.861,0 kg
50015005	BG slot channel, profile I-5, type G20/22, with 0,5% slope	4000	400/450	500/620	1.895,0 kg

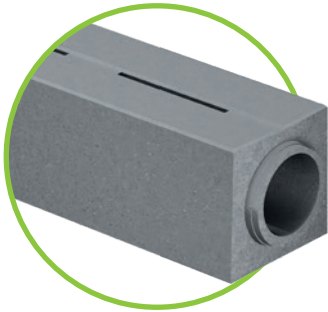


## Accessories

for BG-CLASSIC SL slot channel, profile I-5

Item no.	Accessories	Length	Width	Height	Weight
50015020	Cleaning element (tongue-groove), type T30/30-CO incl. cast iron cover	1000	400/450	500/620	467,0 kg
50015027	Cleaning element (tongue-tongue), type T20/20-CS incl. ductile iron grating	1000	400/450	500/620	515,0 kg
50015023	Sump unit (tongue-groove), type T30/30-VO with outlet incl. ductile iron grating	1000	400/450	500/620	420,0 kg
50015030	Sump unit (groove-groove), type T30/30-VU with outlet incl. ductile iron grating	1000	400/450	500/620	411,0 kg
50000011	Shaft base for sump unit, outlet with pipe coupling DN 200	550	550	380	121,0 kg
50015034	Front cap type ZU (tongue)	120	400/450	620	84,0 kg
50015035	End cap type ZZ (groove)	120	400/450	620	59,0 kg
50000022	Lifting grab for profile I-5, consisting of 2 items				4,4 kg

# BG-CLASSIC<sup>SL</sup> slot channel



## BG-CLASSIC SL, profile II-1, DN 30x30 - class D 400 kN

interrupted slot, inner diameter 30 x 30 cm, without slope

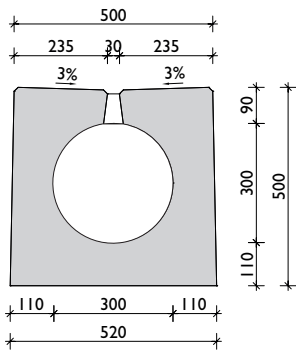
Item no.	Channel body	Length	Width	Height	Weight
50021000	BG slot channel, profile II-1, type T30/30, without slope	4000	500/520	500	1.700,0 kg

### Accessories

for BG-CLASSIC SL slot channel, profile II-1

Item no.	Accessories	Length	Width	Height	Weight
50021180	Cleaning element type CO (tongue-groove) incl. ductile iron grating	1000	500/520	500	419,0 kg
50021182	Cleaning element type CS (tongue-tongue) incl. ductile iron grating	1000	500/520	500	429,0 kg
50021181	Sump unit type VO (tongue-groove) with outlet incl. ductile iron grating	1000	500/520	500	389,0 kg
50021183	Sump unit type VU (groove-groove) with outlet incl. ductile iron grating	1000	500/520	500	379,0 kg
50000011	Shaft base for sump unit, outlet with pipe coupling DN 200	550	550	380	121,0 kg
50021162	Front cap type ZU (tongue)	120	500/520	500	84,0 kg
50021163	End cap type ZZ (groove)	120	500/520	500	57,0 kg
50000021	Lifting grab for profile II-1, consisting of 2 items				4,0 kg

Profile II-1



## BG-CLASSIC SL, profile II-1, DN 30x30 - class D 900 kN

interrupted slot, inner diameter 30 x 30 cm, without slope

Item no.	Channel body	Length	Width	Height	Weight
50021100	BG slot channel, profile II-1, type T30/30, without slope	4000	500/520	500	1.700,0 kg

### Accessories

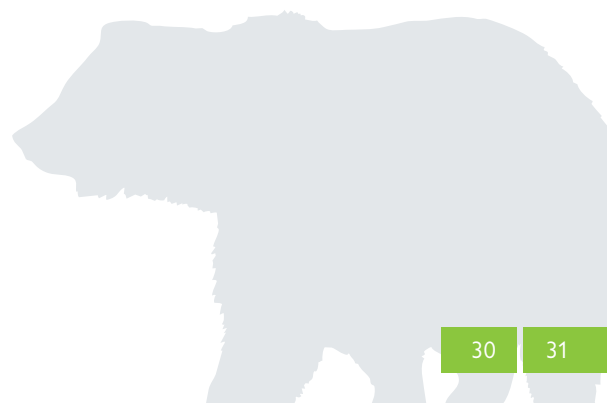
for BG-CLASSIC SL slot channel, profile II-1

Item no.	Accessories	Length	Width	Height	Weight
50021180	Cleaning element type CO (tongue-groove) incl. ductile iron grating	1000	500/520	500	419,0 kg
50021182	Cleaning element type CS (tongue-tongue) incl. ductile iron grating	1000	500/520	500	429,0 kg
50021181	Sump unit type VO (tongue-groove) with outlet incl. ductile iron grating	1000	500/520	500	389,0 kg
50021183	Sump unit type VU (groove-groove) with outlet incl. ductile iron grating	1000	500/520	500	379,0 kg
50000011	Shaft base for sump unit, outlet with pipe coupling DN 200	550	550	380	121,0 kg
50021162	Front cap type ZU (tongue)	120	500/520	500	84,0 kg
50021163	End cap type ZZ (groove)	120	500/520	500	57,0 kg
50000021	Lifting grab for profile II-1, consisting of 2 items				4,0 kg

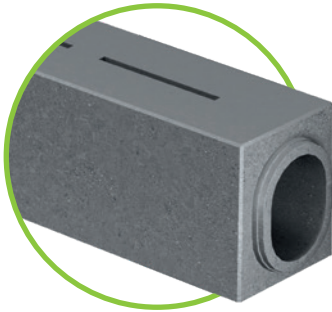


Adapters on request

# References



# BG-CLASSIC<sup>SL</sup> slot channel



## BG-CLASSIC SL, profile III-1, DN 30x30 - class D 400 kN

interrupted slot, inner diameter 30 x 30 cm, without slope

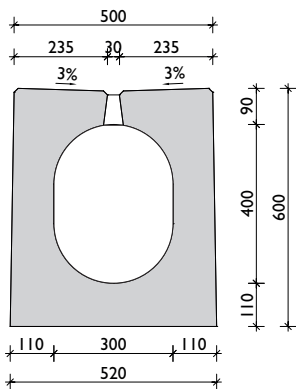
Item no.	Channel body	Length	Width	Height	Weight
50031000	BG slot channel, profile III-1, type T40/40, without slope	4000	500/520	600	1.900,0 kg

### Accessories

for BG-CLASSIC SL slot channel, profile III-1

Item no.	Accessories	Length	Width	Height	Weight
50031180	Cleaning element type CO (tongue-groove) incl. ductile iron grating	1000	500/520	600	468,0 kg
50031182	Cleaning element type CS (tongue-tongue) incl. ductile iron grating	1000	500/520	600	479,0 kg
50031181	Sump unit type VO (tongue-groove) with outlet incl. ductile iron grating	1000	500/520	600	438,0 kg
50031183	Sump unit type VU (groove-groove) with outlet incl. ductile iron grating	1000	500/520	600	427,0 kg
50000011	Shaft base for sump unit, outlet with pipe coupling DN 200	550	550	380	121,0 kg
50031162	Front cap type ZU (tongue)	120	500/520	600	102,0 kg
50031163	End cap type ZZ (groove)	120	500/520	600	67,0 kg
50000021	Lifting grab for profile III-1, consisting of 2 items				4,0 kg

Profile III-1



## BG-CLASSIC SL, profile III-1, DN 30x30 - class F 900 kN

interrupted slot, inner diameter 30 x 30 cm, without slope

Item no.	Channel body	Length	Width	Height	Weight
50031100	BG slot channel, profile III-1, type T40/40, without slope	4000	500/520	600	1.900,0 kg

### Accessories

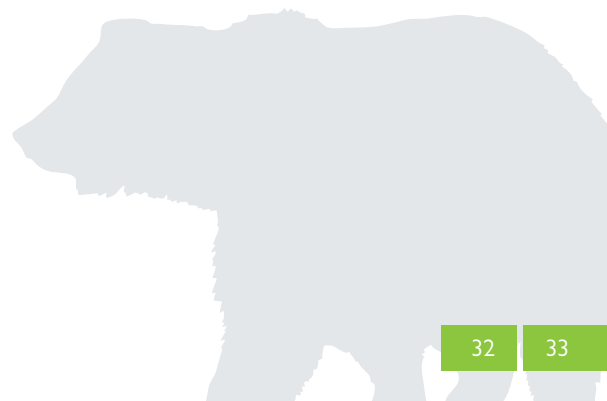
for BG-CLASSIC SL slot channel, profile III-1

Item no.	Accessories	Length	Width	Height	Weight
50031180	Cleaning element type CO (tongue-groove) incl. ductile iron grating	1000	500/520	600	468,0 kg
50031182	Cleaning element type CS (tongue-tongue) incl. ductile iron grating	1000	500/520	600	479,0 kg
50031181	Sump unit type VO (tongue-groove) with outlet incl. ductile iron grating	1000	500/520	600	438,0 kg
50031183	Sump unit type VU (groove-groove) with outlet incl. ductile iron grating	1000	500/520	600	427,0 kg
50000011	Shaft base for sump unit, outlet with pipe coupling DN 200	550	550	380	121,0 kg
50031162	Front cap type ZU (tongue)	120	500/520	600	102,0 kg
50031163	End cap type ZZ (groove)	120	500/520	600	67,0 kg
50000021	Lifting grab for profile III-1, consisting of 2 items				4,0 kg

**i** Adapters on request



# References



# BG-CLASSIC<sup>SL</sup> slot channel



Gully, lower section (on shaft)



Sump unit, upper part



Installed sump unit



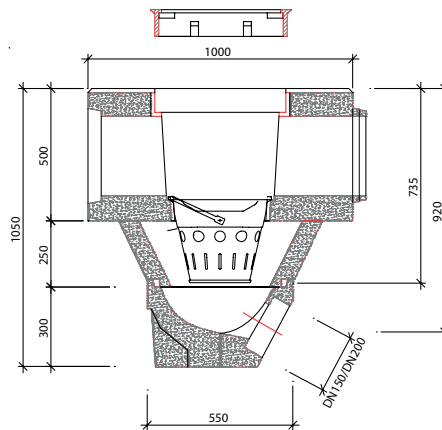
## Sump units:

Sump units are manufactured with an element length of 1000 mm and supplied in several parts. The bottom part must be laid first so that it will not twist or tilt, after that the top part with pre-formed outlet can be placed on it.

The top part is available in 2 different designs: with a groove-groove or tongue-groove system depending on the connection options in the channel line. The ductile iron cover is securely bolted into the frame.

## Installation detail for the sump unit:

Sump unit  
incl. silt bucket  
and cone



Shaft base  
DN 150 or DN 200

## Silt bucket (integrated into sump unit):

A galvanized silt bucket is included in the sales set. It is used to trap coarse dirt and can be cleaned at any time.

## Front/ end caps:

Front caps (tongue) or end caps (groove) provide a clean and tight closure of the channel line.

### Fire protection element

The fire protection component, with an element length of 2000 mm, is used to safely stop burning liquids (e.g. oil, fuel, etc.) in tunnel construction. The integral baffle ensures that liquid does not continue to burn in the channel line.



### Curved element

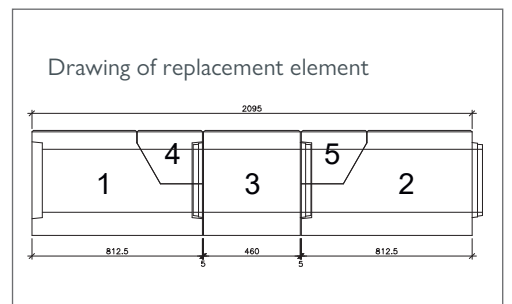
The curved element can be used to lay channel components in a radius of 1 metre, from min. 7° to max. 45°. This flexibility makes installation much easier.



### Replacement element / adapters

The replacement element set consists of 5 individual parts, which enables an uncomplicated replacement of damaged elements in an existing channel line.

The "replacement part" (no. 3) can be supplied in a wide range of installation lengths, from a minimum of 2100 mm to a maximum of 4000 mm.



### Cleaning element

The cleaning element is 1000 mm long and is available in 2 different systems: with a tongue-groove or tongue-tongue system, depending on connection options/position in the channel line. The ductile iron cover is bolted into the cleaning element and can be opened quickly and easily during cleaning work.



### Lifting grabs

Installation can be carried out simply and effectively using the specially developed lifting grab.



# BG-CLASSIC BGZ-S Heavy-duty channel

## General notes

The following installation guidelines and installation examples are intended for standard applications. The load class and the installation location according to EN 1433 have to be adapted to the location conditions from the planner. The technical rules and regulations generally recognised in expert circles must be observed during installation. In special cases, contact the BG applications engineering department.

## BG-CLASSIC® type M channels

**1.** BG-CLASSIC channels type M (standard channel, BGZ-S) are set in a concrete foundation according to Austrian standard B 4710-1 or in microfine concrete according to RVS 08.18.01, whereby it is necessary to take account of the slope of the channel when excavating. Each channel is marked with an arrow showing the direction of flow – see the table and sectional drawings for details. The channel elements should only be installed with suitable tools (e.g. BG lifting grab).

**2.** For the traffic-safe fitting of the gratings, depending on the area of application, we recommend using gratings with locking (quick-locking or fixing clips, SV). According to European standard EN 1433 from cl. D 400 kN there is to use preferably a locking device (e.g. bolting material, SV).

**3.** The rebated joint between the channel bodies can be sealed and cemented with appropriate sealing compounds – for description of material and quantity calculation see BG sealing system – [www.say.bg/en/dichtsystem\\_pdf](http://www.say.bg/en/dichtsystem_pdf).

**4.** Before making the adjacent cover layer, make sure that the gratings are inserted and if necessary fixed, or the channels are braced adequately against compression. Avoid damaging the channels while compacting the superstructure and the pavement (asphalt, pavement, concrete, etc.).

**5.** In the event of horizontal forces (e.g. areas of concrete, slopes, etc.) it is necessary to provide a sufficiently sized running joint in the area of the carriageway edge at a distance of 30-150 cm to the channel. In the adjacent concrete area, expansion joints which cross the channel run must be positioned so that they run through a channel joint.

**6.** To prevent uncontrolled stress cracks in a concrete stretcher along a channel run, preformed crack and/or expansion joints must be added at regular intervals, according to recognised technical rules or the specification of a static calculation. These joints should be added at right angles (along the channel section) to the channel element joints. The number and spacing of joints also depend on the quality of the concrete and the ambient temperatures during concreting – as well as the concrete after treatment – and should be carried out according to specification.

**7.** When shear forces occur, pavements must be force-locked to the backrest. This can be done by setting the first three rows of paving (next to the channel run) in a mortar bed. The joints must be back-filled with mineral materials. Shear forces from the paving must not

act directly on the channel walls (e.g. thermal expansion, braking forces, etc.). The respective technical guidelines for the creation of paved surfaces, in bound or unbound construction, must be observed accordingly.

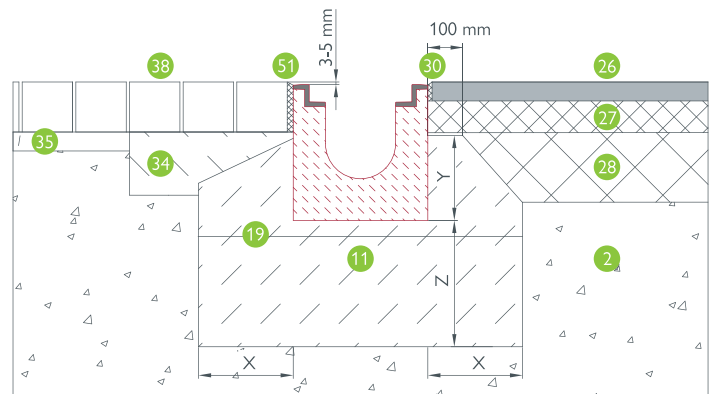
**8.** All adjacent surfaces should always be 3 – 5 mm higher than the surface of the channel/grating to avoid mechanical damage (e.g. snow clearing) and to guarantee the drainage of water.

**9.** Channel-grating-systems (drainage channels) are not suitable to use across the carriageway on motorways and highways.

**10.** The channel system must be inspected at regular intervals (at least 1x per year) for contamination and its functioning, and cleaned if necessary, especially the sump unit with silt bucket.



The installation instructions also apply to sump units.

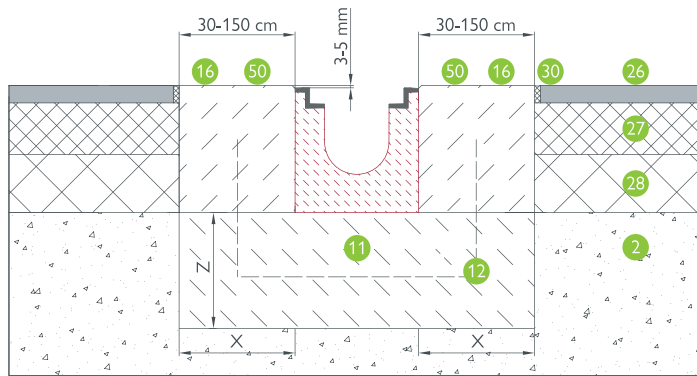


BG-CLASSIC BGZ-S, NW 100: pavement – asphalt, cl. A – D

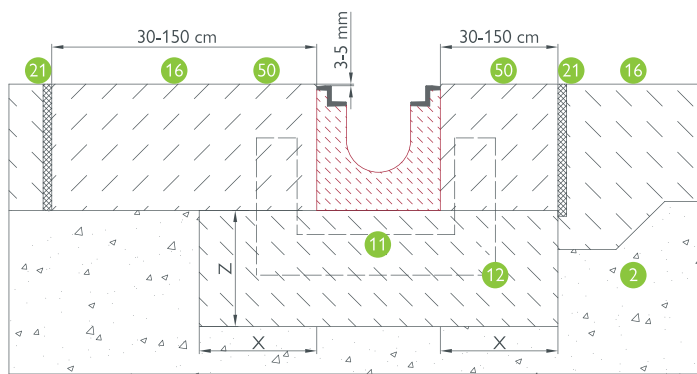
Load Class	A 15 kN	B 125 kN	C 250 kN	D 400 kN	E 600 kN
concrete quality – foundation according to Austrian standard B 4710-1*	C 16/20	C 20/25	C 20/25	C 25/30	C 25/30
Width: X	≥ 8 cm	≥ 10 cm	≥ 15 cm	≥ 20 cm	≥ 20 cm
Height: Y	Channel height – 5 cm (mini – 3 cm)			Channel construction height	
Thickness: Z	≥ 8 cm	≥ 10 cm	≥ 15 cm	≥ 20 cm	≥ 20 cm
constr. reinforcement	not required				required

\*Concrete quality is a minimum requirement which is to be adapted to the local requirements. Class F 900 is to be clarified with our application engineers on request.





BG-CLASSIC BGZ-S, NW 100: asphalt – asphalt, cl. E – F

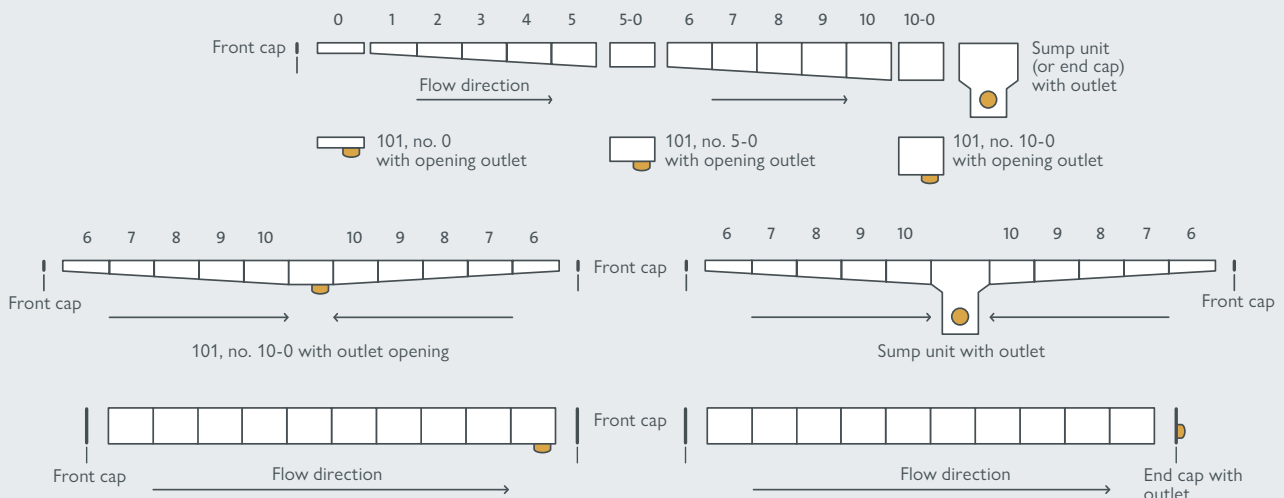


BG-CLASSIC BGZ-S, NW 100: concrete – concrete, cl. D – E

## Key

- 2 load-bearing gravel layer
- 11 concrete foundation acc. to static calculations
- 12 class E: structural reinforcement
- 16 concrete pavement
- 19 working joint
- 21 expansion joint
- 26 surface course
- 27 bitumen gravel
- 28 load-bearing bitumen layer
- 30 bituminous sealing tape
- 34 mortar bed
- 35 grit bed
- 38 paving stones
- 50 transversal-concealed joint each 6 m at channel joints alternatively structural reinforcement
- 51 cavity-free joint sealing

## Installation examples BG-CLASSIC



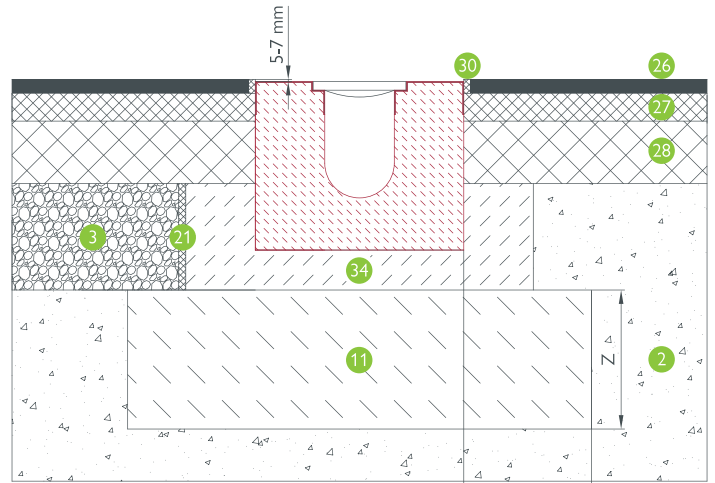
# BG-CLASSIC BG-SI

## Safety channel

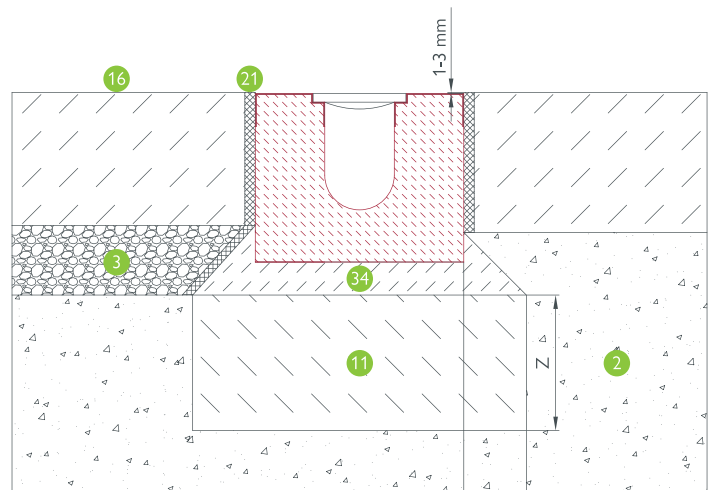
### General notes

Our installation guidelines and installation examples are generally accepted suggestions. Special types of installation must be defined by the planners on the basis of local conditions. The technical rules and regulations generally recognised in expert circles must be observed during installation.

1. The load class (in accordance with EN 1433) and installation site must be appropriate for the local conditions.
2. Channels must be installed on mechanically compressed base layers or reinforced concrete slabs according to the project engineer's specifications. The drainage channels are lifted onto spacer blocks and grouted with high-strength mortar or laid on an earth-moist foundation. The channel elements must always be lifted using suitable tools (e.g. BG lifting grab).
3. A supporting wedge may be needed at the side, depending on structural requirements. Begin by laying the channel runs from the junction to the outlet.
4. To ensure that the section is completely sealed, a moulded safety seam is already provided on the face of BG drainage channels. It determines the correct width and depth of the sealing joint and can be sealed with a suitable sealant (see the guidelines for use of BG sealing systems). In addition, a moulded hemisphere is provided on the front to ensure the correct spacing between the individual channel elements in order to compensate for expansion stresses caused by temperature fluctuations.
5. When sealing the adjacent surfaces, always ensure that the channel elements are not exposed to any mechanical damage.
6. Any running joints needed between the BG drainage channels and the adjacent carriageway (to compensate for horizontal forces) can be provided directly on the channel element. In the adjacent concrete area, expansion joints which cross the channel run must be positioned so that they run through a channel joint.
7. All adjacent concrete surfaces should be permanently approx. 3 – 5 mm higher than the surface of the channels. The installation instructions also apply to sump units.
8. Ensure that the bolts in the gratings form a permanent, positive connection. The operator is responsible for regular maintenance and inspection!



BG-CLASSIC BG-SI, NW 200: asphalt – asphalt, cl. E – F



BG-CLASSIC BG-SI, NW 200: concrete – concrete, cl. E – F

Load Class	A 15 kN	B 125 kN	C 250 kN	D 400 kN	E 600 kN	F 900 kN
concrete quality – base acc. to ÖNORM B 4710-1*	C 16/20	C 20/25	C 20/25	C 25/30	C 25/30	C 25/30
Foundation width: X	≥ 8 cm	≥ 10 cm	≥ 15 cm	≥ 15 cm	≥ 15 cm	≥ 20 cm
Foundation height: Y						
Foundation thickness: Z	≥ 8 cm	≥ 10 cm	≥ 15 cm	≥ 20 cm	≥ 20 cm	≥ 25 cm
BG-SI	not required					
BG-SL	minimum channel height -15 cm					

# References



**ATTENTION** Acceleration, braking and torsional forces must be considered separately. Follow the installation instructions. Technical specifications are subject to change. Not suitable for installation across the carriageway in primary roads or motorways.

# BG-CLASSIC<sup>SL</sup> slot channel



## General notes

The following installation guidelines and installation examples are intended for standard applications. The load class and the installation location must be adapted to the local conditions by the planners. The technical rules and guidelines that are generally recognized among experts should be taken into consideration.

EN 1433 includes an exception for the slot widths of slot channels which are installed in areas where the use of bicycles is not permitted. On surfaces where bicycles are permitted, slot channels with a slot width equal to 30 mm may only be installed so that the longitudinal axis of the slot lies at right angles, or a maximum of +/- 45°, to the direction of travel.

## Foundation

**1.** BG slot channels should be laid as follows depending on the condition of the foundation and the load class:

**CI. D 400 kN, type I – no load-bearing foundation required.** Channels are laid on a mechanically compressed base layer (= frost protection layer) and a blinding/levelling layer made of concrete.

**CI. F 900 kN, Type M – structurally calculated reinforced concrete foundation required according to project engineer's specifications.** When laying a channel on the reinforced concrete foundation, the connection between channel and foundation must be established using a suitable volume-stable assembly or grouting mortar, at least 2 cm thick, with quality at least C 25/30. When using a grouting mortar, the slot channel must be positioned and aligned on appropriate spacers. When backfilling the channel, ensure that the channel is evenly inserted and continuously supported (avoid backfilling from one side).



## Lifting tool

**2.** BG slot channels must be unloaded and moved using suitable lifting tools which allow for even and precise lifting and lowering (e.g. truck-mounted crane, appropriate digger). The components must be suspended centrally. Lifting tools available on loan from BG.

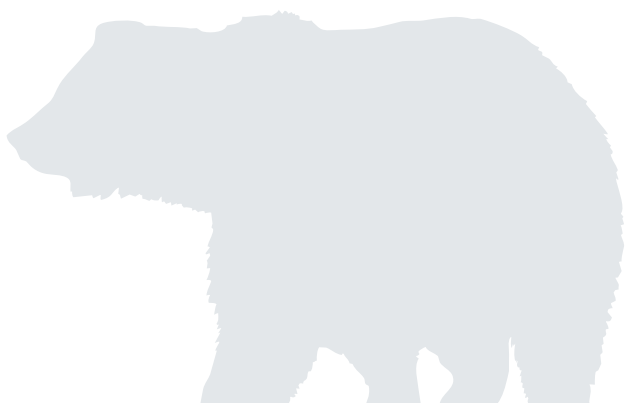


**3.** First the lower part of the lifting tool is lowered into the channel slot and turned through 90° to ensure that it is protected against rotation in the slot. Then the lifting device of the crane or digger can be hooked onto the lifting tool and the channel can be lifted easily and safely.



## Butt joints and sealing

4. Ensure that the first channel in the line is precisely positioned. During laying, the surfaces must be precisely aligned.
5. Before joining the elements together, clean the socket and fit the gasket on the spigot end. Apply the lubricant supplied evenly to the gasket and the sealing surface of the socket.
6. The slot channel suspended from the lifting tool must then be moved to the channel that has already been laid, until the gasket is evenly covered and the parts can be securely pushed together. The width of the butt joint must permanently be min. 5 mm to max. 15 mm. For uniform joints, we recommend using aids such as wooden slats with a thickness of around 10 mm.



# BG-CLASSIC<sup>SL</sup>

slot channel



### Covering surfaces and expansion joints

7. The road surface connection (asphalt, concrete, etc.) must be installed according to the planning specifications. When connecting concrete surfaces, sufficiently large dilation joints (expansion joints) must be provided along the channel so that no temperature-related expansion forces affect the sides of the channel. A continuous, suitable polystyrene plate or a bituminous softboard plate must be installed along the longitudinal joint between the channel and concrete cover over the full height of the channel. These plates must be capable of absorbing the expansion forces of the concrete cover and may not transfer/dissipate the horizontal forces of the concrete cover onto the channel.

**IMPORTANT!** Contractors must ensure that there is no rigid connection between the adjacent road surface (foundation, base layer, cover) and the channel.



8. All adjacent surface layers must permanently run at least at the same level as the channel surface in order to avoid mechanical damage (e.g. snow clearing) and in order to ensure proper water drainage.

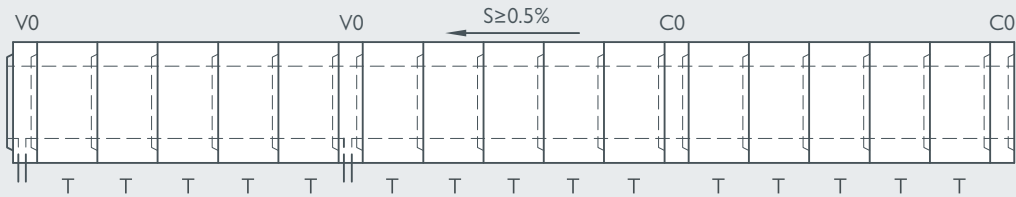
9. Following completion of the adjacent surfaces, the longitudinal and transverse joints of the channels must be filled with a non-shrink sealant. Always ensure that the transverse joints between the individual channel units are permanently formed so that minor, temperature-related longitudinal movements of the slot channels can be absorbed. In order to avoid spalling, the slot channels must not be driven on during the construction phase. When working with machines and vehicles, ensure that the channels are not damaged.



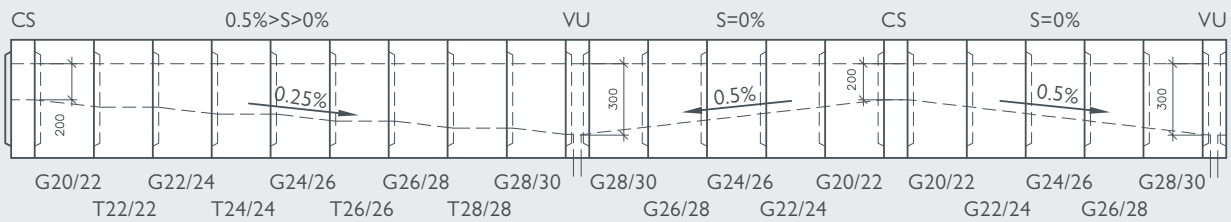
Details and further information on our homepage [www.bg-graspointner.com](http://www.bg-graspointner.com). For special installation requirements, you can also contact our application engineering directly – [office@bg-graspointner.com](mailto:office@bg-graspointner.com)

## Installation examples

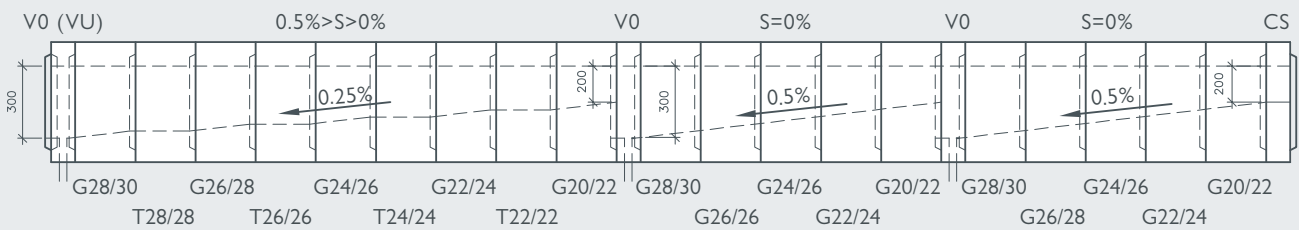
Arrangement of slot channels without inner slope:



Arrangement of slot channels with inner slope (slot channels with base drainage in roof-shaped bed):



Arrangement of slot channels with inner slope (slot channels with base drainage in zigzag-shaped bed):



Key:

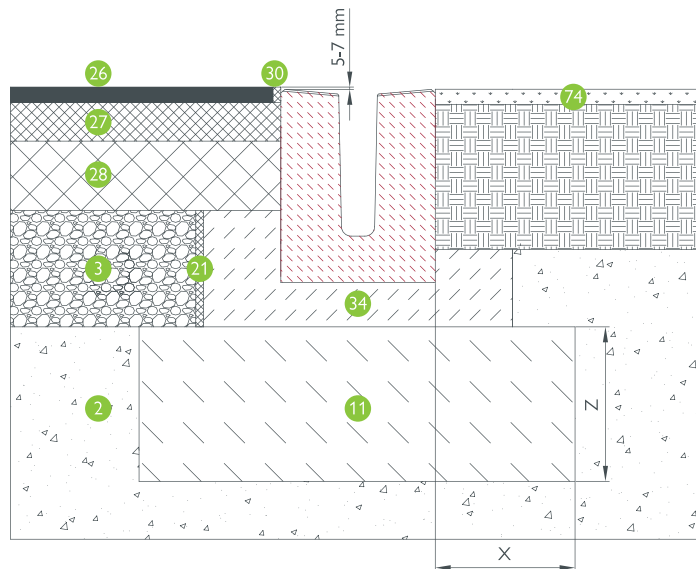
V0 = Sump unit with tongue and groove

VU = Sump unit with groove on both sides

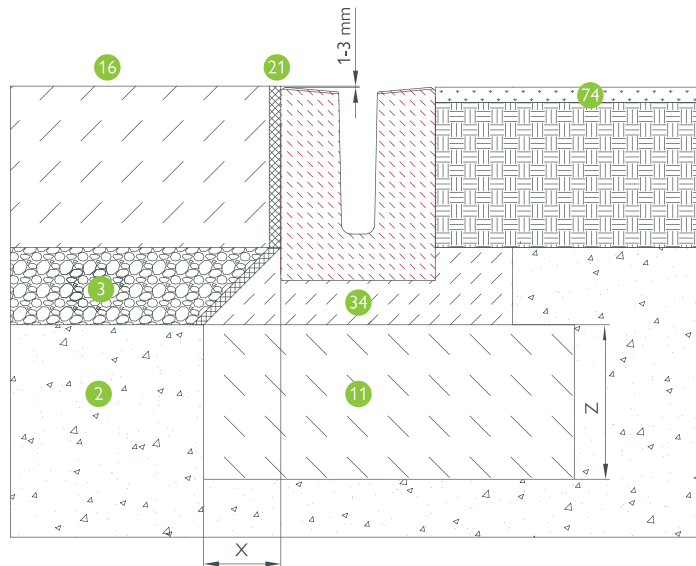
C0 = Cleaning element with tongue and groove

CS = Cleaning element with tongue on both sides

# BG-CLASSIC BG-SL slot channel



BG-CLASSIC BG-SL, NW 100: asphalt – green area, cl. E – F



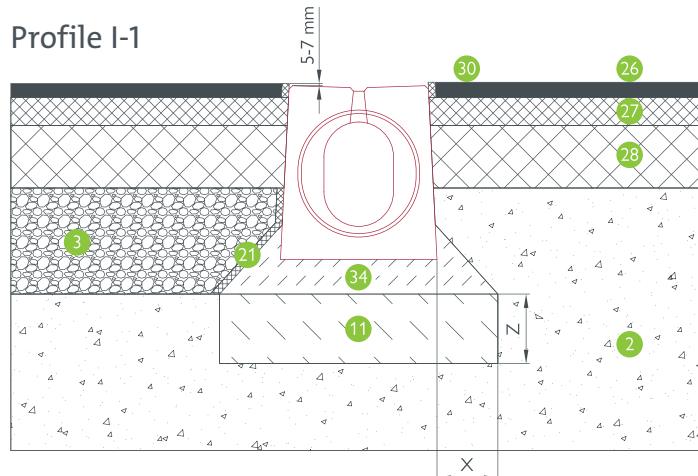
BG-CLASSIC BG-SL, NW 100: concrete – green area, cl. E – F



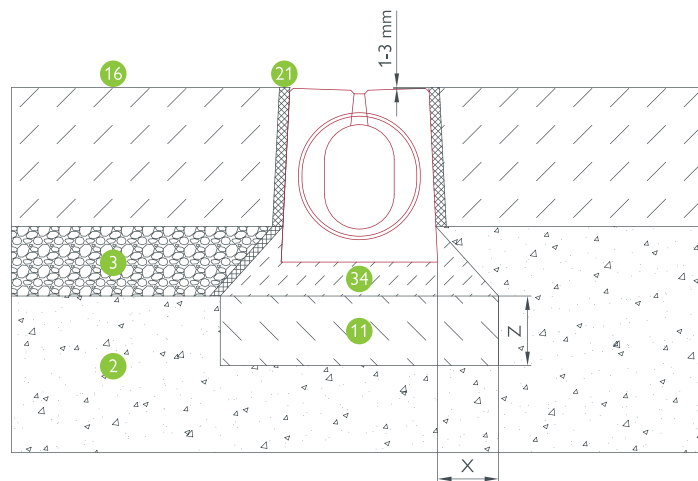
Details and further information on our homepage [www.bg-graspointner.com](http://www.bg-graspointner.com). For special installation requirements, you can also contact our application engineering directly – [office@bg-graspointner.com](mailto:office@bg-graspointner.com)

# BG-CLASSIC<sup>SL</sup>

slot channel



BG-CLASSIC SL, NW 100: asphalt – asphalt, cl. D – F



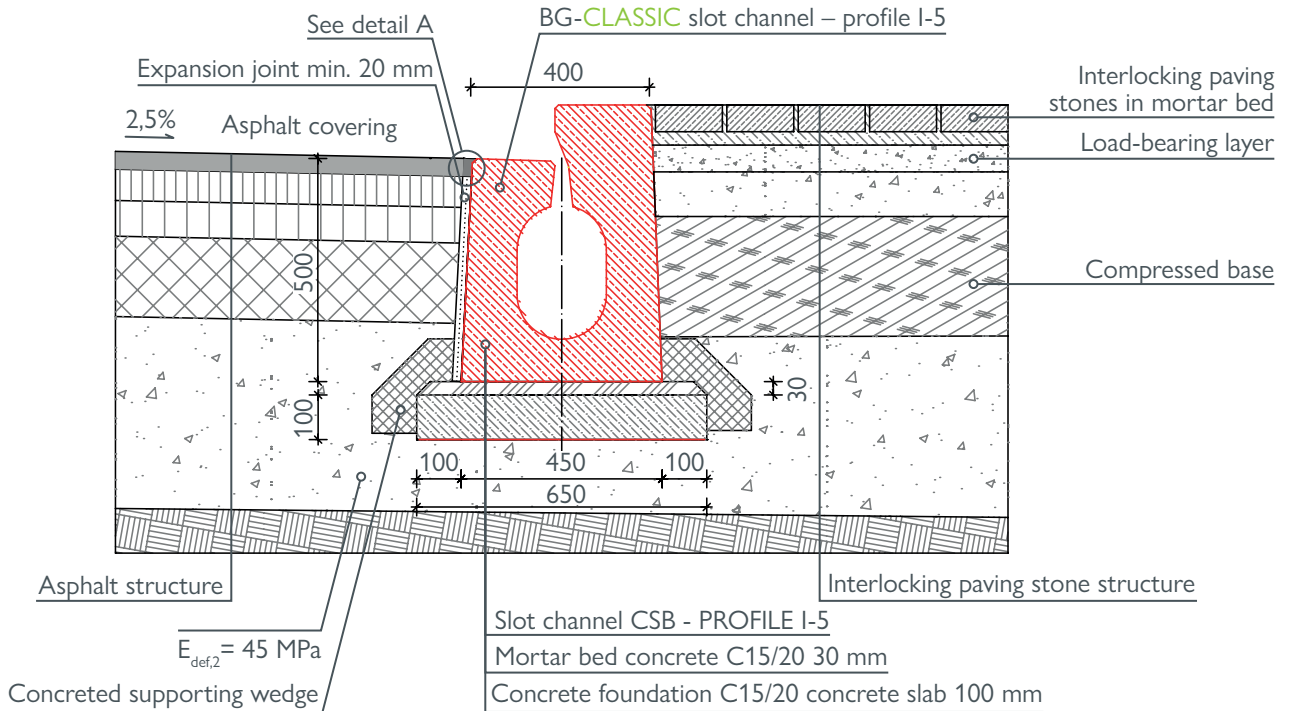
BG-CLASSIC SL, NW 100: concrete – concrete cl. D – F

## Key

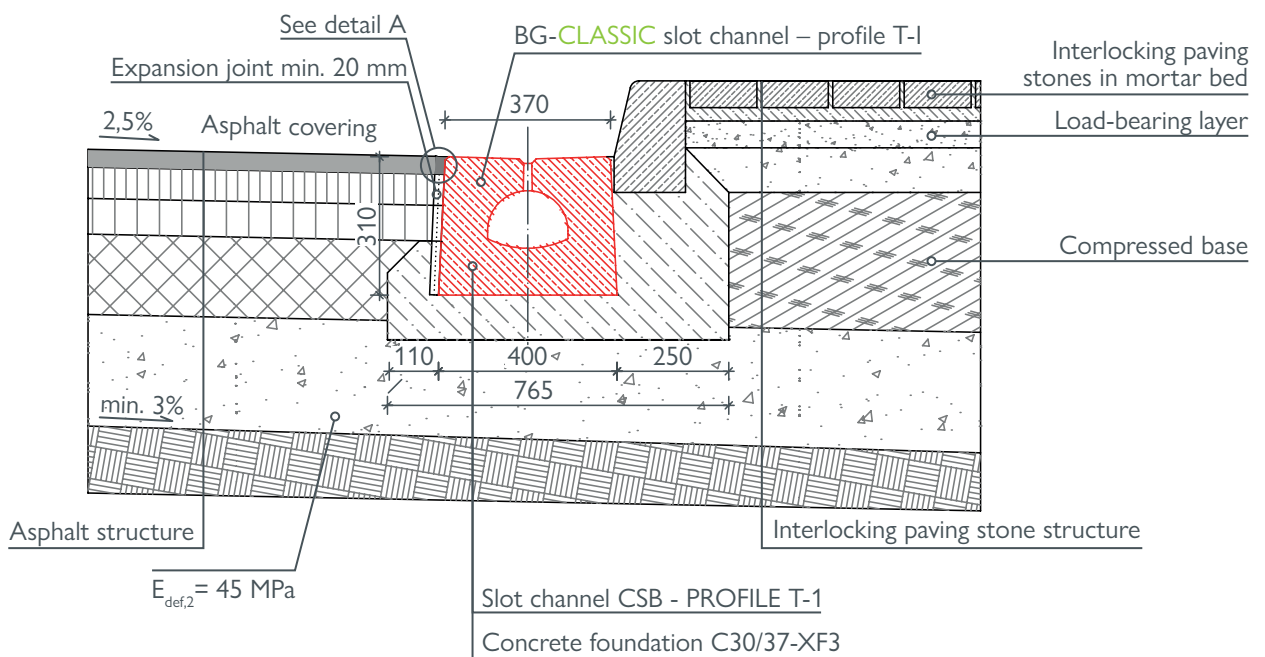
- 2 load-bearing gravel layer
- 3 cement-stab. gravel layer
- 11 concrete foundation acc. to static calculations
- 16 concrete pavement
- 21 expansion joint
- 26 surface course
- 27 bitumen gravel
- 28 bitumen layer
- 30 bituminous sealing tape
- 34 mortar bed
- 74 green area

**ATTENTION** Acceleration, braking and torsional forces must be considered separately. Follow the installation instructions. Technical specifications are subject to change. Not suitable for installation across the carriageway in primary roads or motorways.

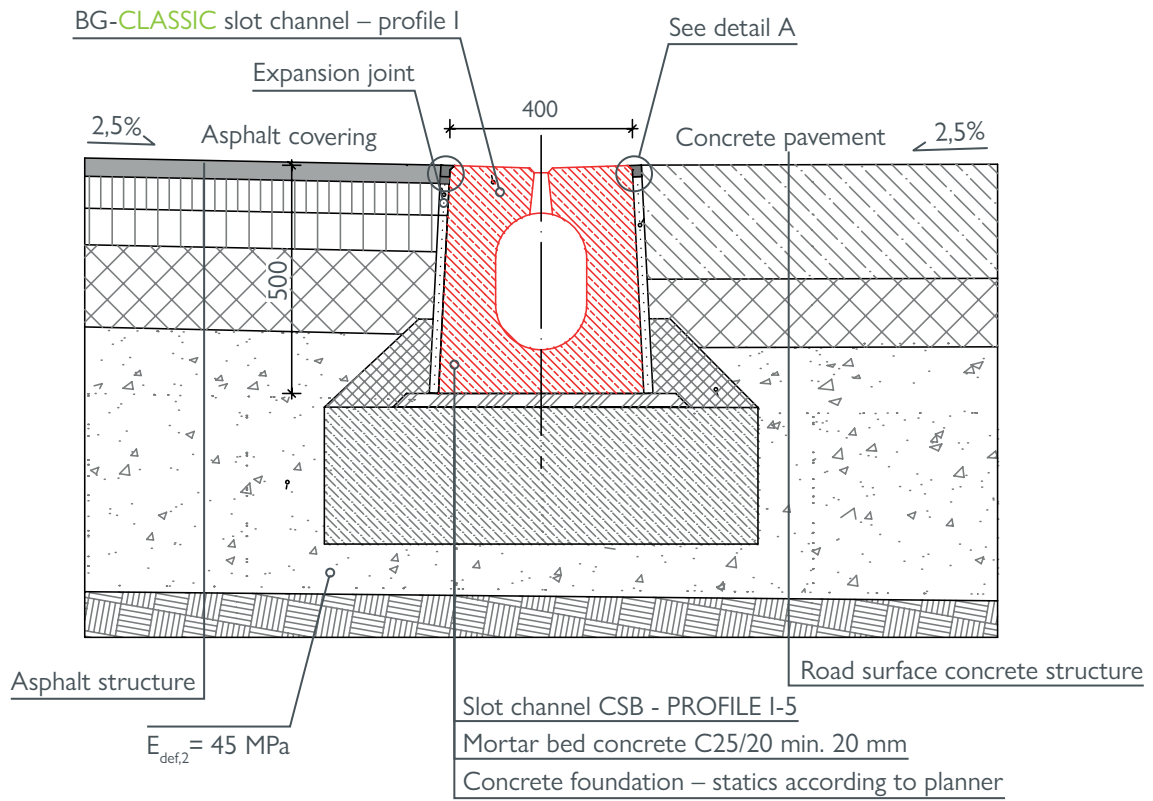
## BG-CLASSIC SL slot channel, profile I-5 with kerbstone:



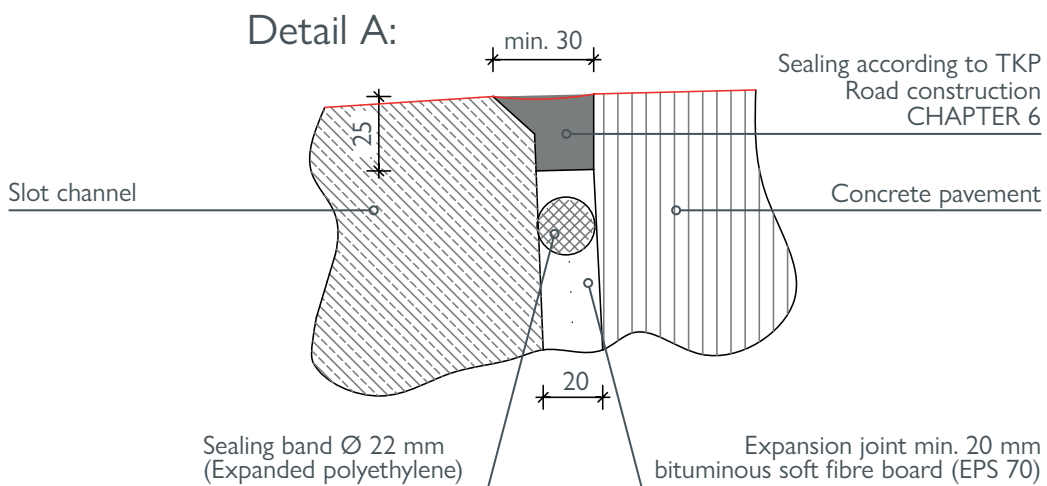
## BG-CLASSIC SL slot channel, profile T-1 laid along a kerbstone:



**BG-CLASSIC SL slot channel with concrete and asphalt connection:**



**Expansion joint detail:**



**Please note:** Running joint e.g. EPS70, bituminous softboard plate, etc.



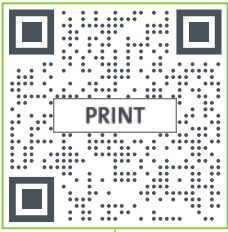
BG-Graspointner GmbH  
Gessenschwandt 39  
4882 Oberwang

Phone: +43 6233/8900-0

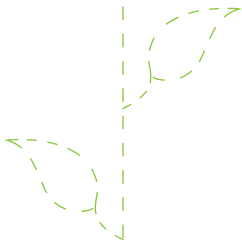
Fax: +43 6233/8900-303

E-Mail: [office@bg-graspointner.com](mailto:office@bg-graspointner.com)

Web: [www.bg-graspointner.com](http://www.bg-graspointner.com)



[www.say.bg/en/print](http://www.say.bg/en/print)



Find out more about our dedication to sustainable print products in our blog article.



PurePrint®  
innovated by gugler\* DruckSinn  
Healthy. Residue-free. Klimapositiv.  
[drucksinn.at](http://drucksinn.at)



Printed according to criteria of the Austrian Eco-Label  
"printed products": gugler\*print, Melk,  
UWZ no. 609, [www.gugler.at](http://www.gugler.at)



This paper is made from material from well-managed, FSC®-certified forests and other controlled sources.



\* Our contribution to the reforestation project of BOKU Vienna in Ethiopia.

Your partner for BG-Graspointner drainage systems

