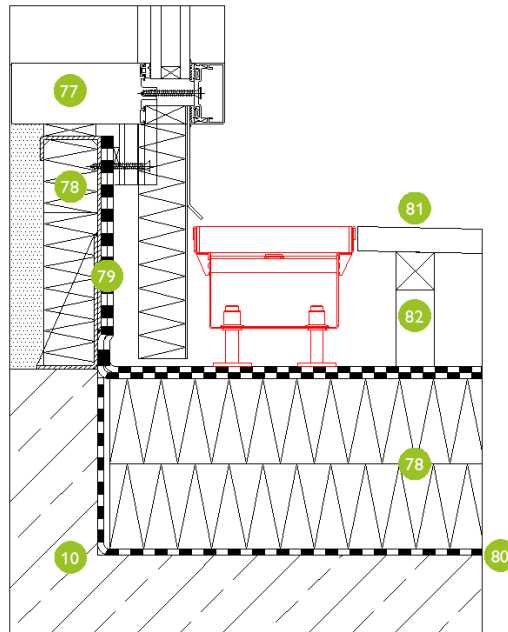
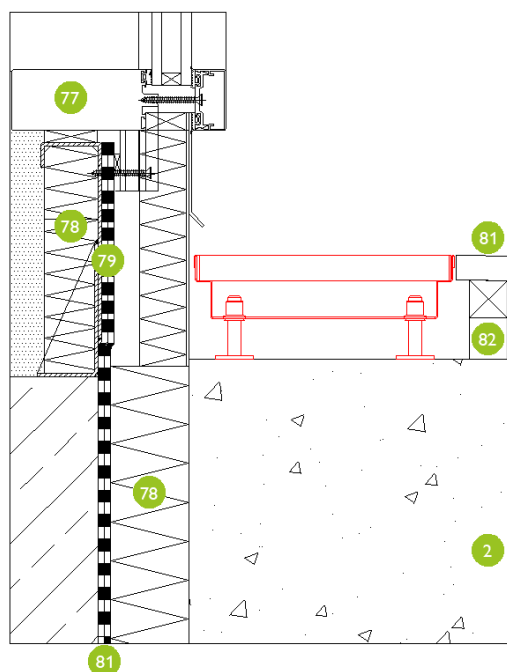


Glasfassade / glass facade RB130



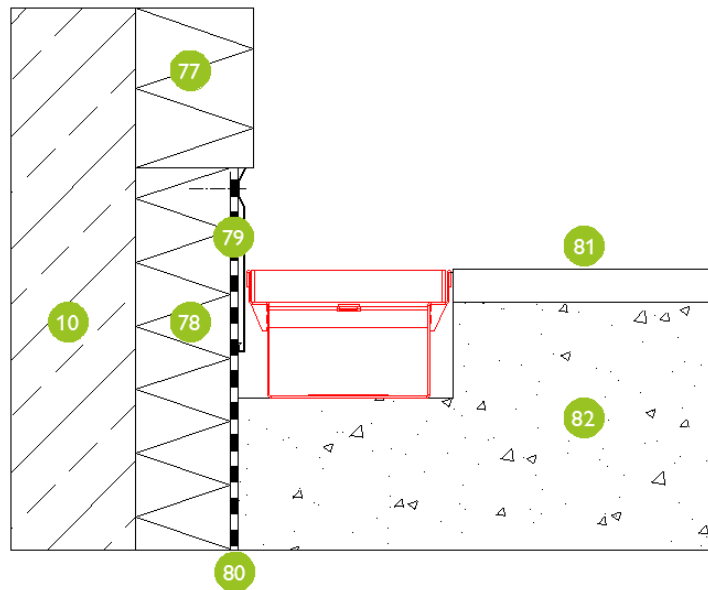
Glasfassade / glass facade RB200



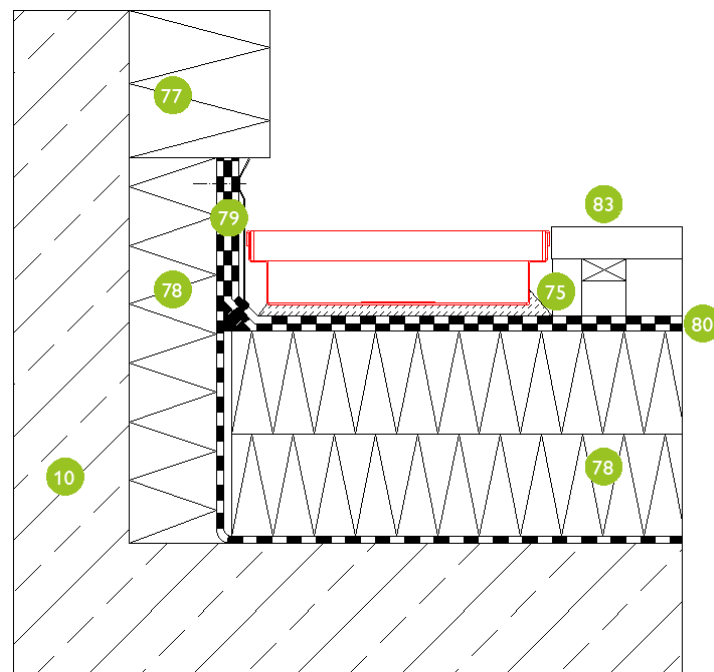
Legende / key:

- | | | | |
|-----|---|-----|---|
| 2. | tragfähige Schotterschicht / load-bearing gravel layer | 80. | Abdichtungsfolie / sealing foil |
| 10. | Betonfundament / concrete foundation | 81. | Bodenaufbau / floor structure |
| 77. | Fassadenkonstruktion / facade construction | 82. | Unterbaukonstruktion lt. Planer: z.B. Kiesbett, ... / sub-construction according to planer: such gravel bed |
| 78. | Wärmedämmung / thermal insulation | | |
| 79. | Mindestanschlusshöhe lt. ÖNORM B 3691 / minimum connection height in accordance with Austrian standard B 3691 | | |

Wandanschluss / wall connection RB130



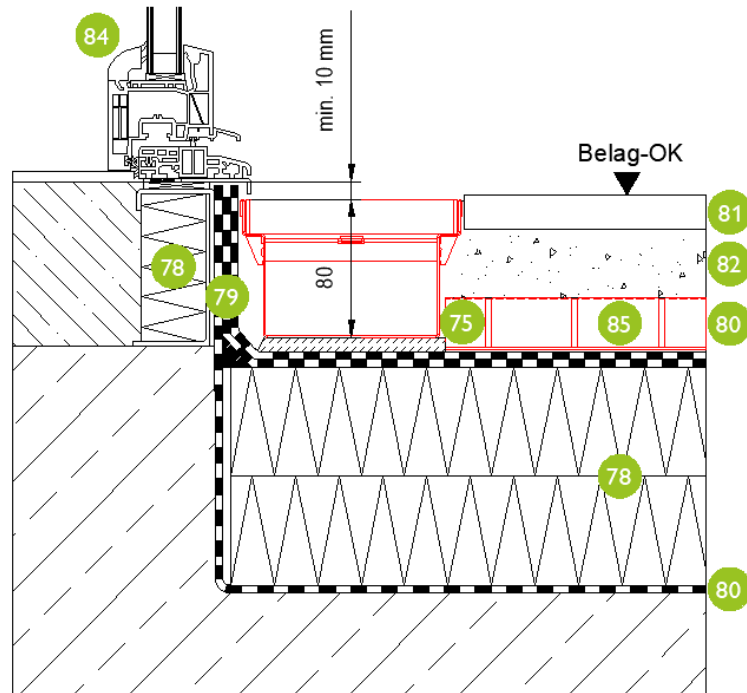
Wandanschluss / wall connection RB200



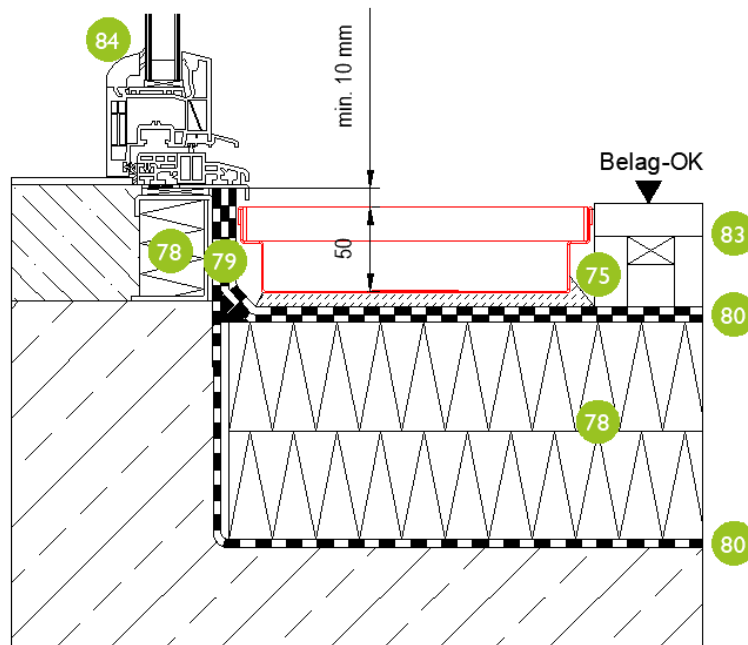
Legende / key:

- | | | | |
|-----|---|-----|--|
| 10. | Betonfundament / concrete foundation | 80. | Abdichtungsfolie / sealing foil |
| 75. | Ausgleichsschicht / leveling layer | 81. | Bodenaufbau / floor structure |
| 77. | Fassadenkonstruktion / facade construction | 82. | Unterkonstruktion lt. Planer: z.B. Kiesbett, ... / sub-construction according to planer: such gravel bed |
| 78. | Wärmedämmung / thermal insulation | 83. | Belag: z.B. Terrassendielen / covering: e.g. wooden decking |
| 79. | Mindestanschlusshöhe lt. ÖNORM B 3691 / minimum connection height in accordance with Austrian standard B 3691 | | |

Türeinbau / door installation RB130



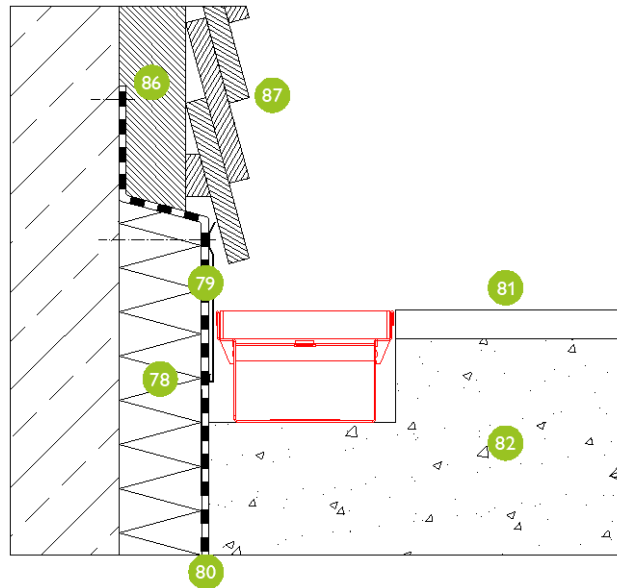
Türeinbau / door installation RB200



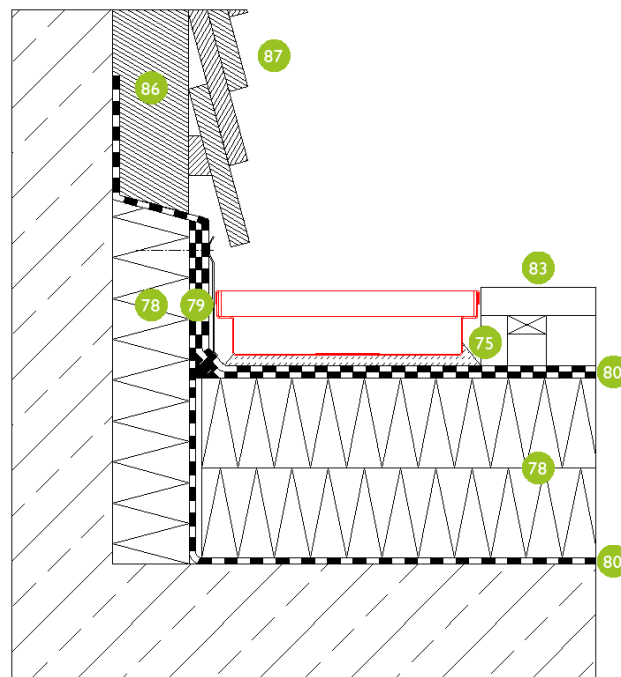
Legende / key:

- | | | | |
|-----|---|-----|--|
| 75. | Ausgleichsschicht / leveling layer | 82. | Unterkonstruktion lt. Planer: z.B. Kiesbett, ... / sub-construction according to planer: such gravel bed |
| 78. | Wärmedämmung / thermal insulation | 83. | Belag: z.B. Terrassendielen / covering: e.g. wooden decking |
| 79. | Mindestanschlusshöhe lt. ÖNORM B 3691 / minimum connection height in accordance with Austrian standard B 3691 | 84. | Türkonstruktion / door construction |
| 80. | Abdichtungsfolie / sealing foil | 85. | Stichkanal zum Ablauf / branch canal to outlet |
| 81. | Bodenaufbau / floor structure | | |

Holzfassade / timber facade RB130



Holzfassade / timber facade RB200



Legende / key:

- | | | | |
|-----|---|-----|--|
| 75. | Ausgleichsschicht / leveling layer | 82. | Unterkonstruktion lt. Planer: z.B. Kiesbett, ... / sub-construction according to planer: such gravel bed |
| 78. | Wärmedämmung / thermal insulation | 83. | Belag: z.B. Terrassendielen / covering: e.g. wooden decking |
| 79. | Mindestanschlusshöhe lt. ÖNORM B 3691 / minimum connection height in accordance with Austrian standard B 3691 | 86. | Polsterleiste sowie Wärmedämmung / joists with thermal insulation |
| 80. | Abdichtungsfolie / sealing foil | 87. | Holzfassade / wooden facade |
| 81. | Bodenaufbau / floor structure | | |