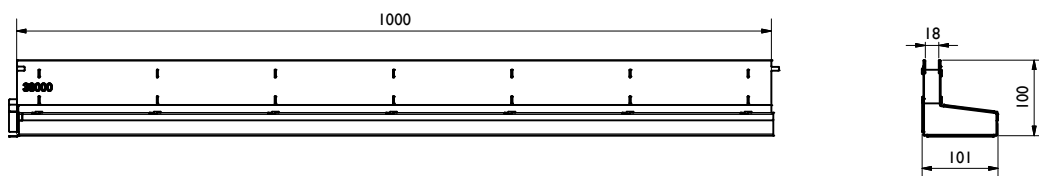
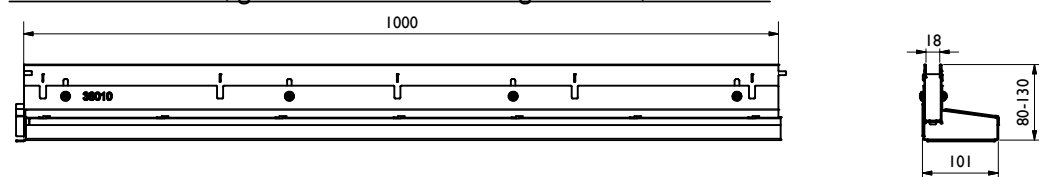


1. Terrassen-Schlitzrinne / Terrace slot channel:

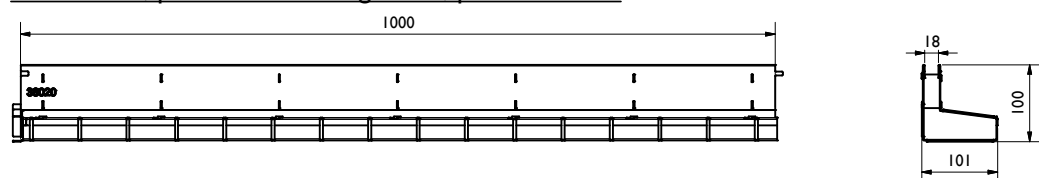
fixe BH 100, geschlossen / fix height 100, closed / E



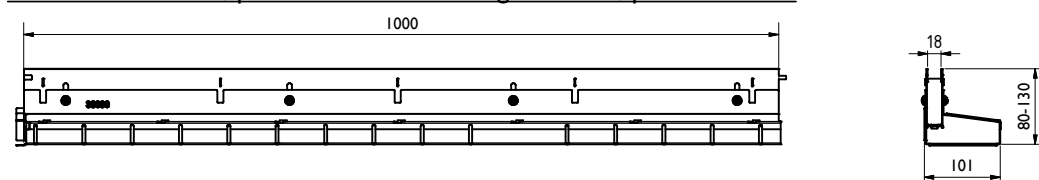
variable BH 80-130, geschlossen / variable height 80-130, closed / E



fixe BH 100, perforiert / fix height 100, perforated / E

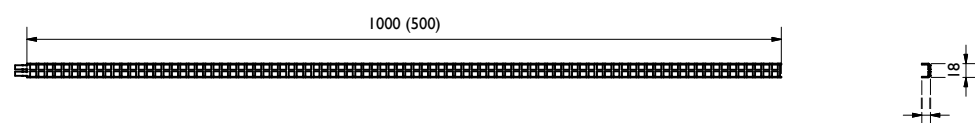


variable BH 80-130, perforiert / variable height 80-130, perforated / E

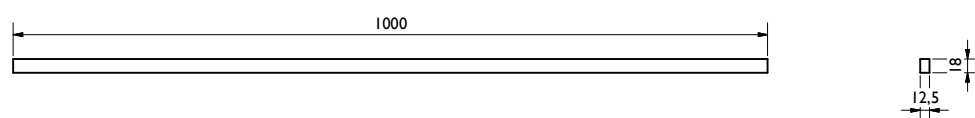


2. Abdeckungen / Gratings:

BG-FA Schlitzeinlage mit Quadratloch 8/8mm / BG-FA slot inlay with square hole 8/8mm  
E 37956 (37955)



Bauzeitabdeckung SW 12,5 und 18mm / construction time barrier SW 12,5 and 18mm  
H 37961



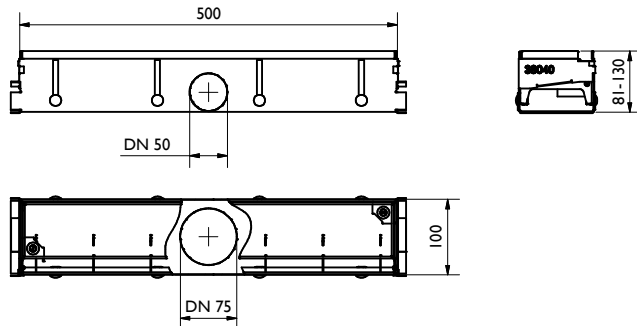
Rinne / channel - Maße / dimensions [mm]						
Typ	Höhe A height A	Höhe B height B	Länge length	BG code V	BG code E	BG code G
BG-TE SW 18 geschlossen/closed	-	100	1000	-	38000	-
BG-TE SW 18 geschlossen/closed	-	80-130	1000	-	38010	-
BG-TE SW 18 perforiert/perforated	-	100	1000	-	38020	-
BG-TE SW 18 perforiert/perforated	-	80-130	1000	-	38030	-

Legende / explanation:	
V:	verzinkter Stahl / galvanized steel
E:	Edelstahl / stainless steel
G:	Guß Eisen / ductil iron
H:	Holz / wood

3. Revisionsschächte / Revision shaft:

Revisionsschacht, 500/100, mit Ablauf unten oder seitlich / Maintenance unit, 500/100, vertical outlet

E 38040



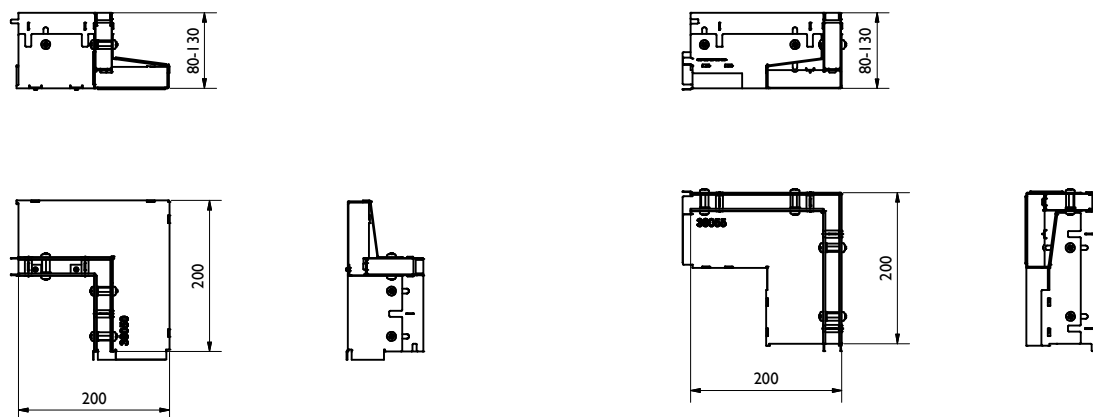
4. Eckelemente, 200/200, geschlossen / Corner pieces, 200/200, closed:

Ausseneck / Outside corner

Inneneck / Inside corner

E 38050

E 38055



5. Stirnplatte, Breite 100 mm, links/rechts / front cap , with 100 mm, left/right:

E 38060

